

Ray Unified School District

Pinal County
Operational peer group: F
Legislative districts: 5, 23

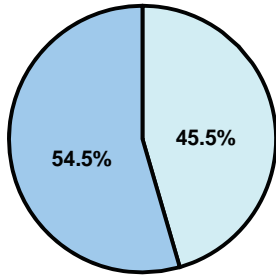
District size: Small
Students attending: 536
Number of schools: 3

OPERATIONAL EFFICIENCY

Average per-pupil spending

District
State

Classroom
\$5,445
\$4,497



Nonclassroom
\$4,544
\$3,411

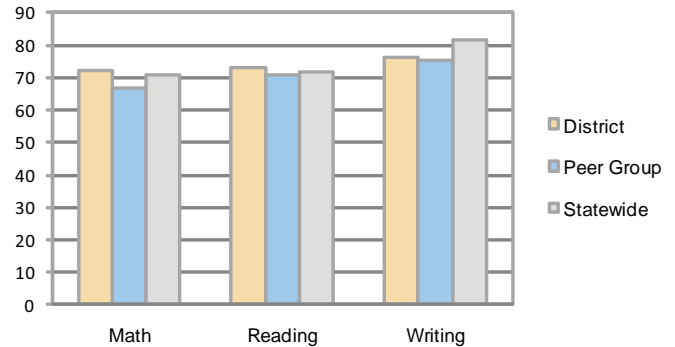
Total
\$9,989
\$7,908

5-year trend

Total spending per pupil increased by 36 percent. Spending in the classroom varied year to year and decreased significantly overall from 58.3 to 54.5 percent. Spending on administration, plant operations, and transportation increased, while spending in other nonclassroom areas remained fairly stable.

STUDENT ACHIEVEMENT AND TEACHER INFORMATION

Percentage of students meeting state standards (AIMS)



Adequate Yearly Progress (AYP) toward federal goals

3 schools met all applicable AYP objectives for NCLB.

District's cost measures relative to peer group

Operational Area	Measure	District	Peer Average	State Average
Administration	Cost per pupil	\$1,436	\$1,524	\$729
	Students per administrator	36	42	66
Plant Operations	Cost per square foot	\$3.78	\$5.78	\$6.40
	Square footage per student	357	284	144
Food Service	Cost per meal equivalent	\$3.46	\$3.38	\$2.53
Transportation	Cost per mile	\$2.90	\$2.60	\$3.36
	Miles per rider	438	294	271

Very Low Low Comparable High Very High

Student and teacher information

Measure	District	Peer average	State average
Attendance rate	94%	95%	95%
Graduation rate (2008)	85%	79%	75%
Poverty rate	17%	14%	19%
Student/teacher ratio	13.0	14.7	17.1
Average teacher salary	\$43,733	\$43,600	\$45,209
Average years' experience	11.4	10.7	8.3
Percent of teachers in first 3 years	20%	23%	16%

Proposition 301

Teacher pay

On average, each teacher, librarian, and counselor earned between \$4,785 and \$6,208 in additional salary.

Performance pay plan goals and results

Type of goal	Goal met?
Student achievement	■
Dropout/ graduation rates	
Student attendance	
Parent/student satisfaction	
Teacher attendance	
Teacher professional development	
Teacher evaluations	
Tutoring	
Other	■

■ = yes, □ = no, and ▮ = partially

Per-pupil spending by function

	District		Peer	State	National
	2008	2009	2009	2009	2007
Total	\$9,452	\$9,989	\$10,596	\$7,908	\$9,683
Classroom dollars	\$5,249	\$5,445	\$5,393	\$4,497	\$5,903
Nonclassroom dollars:	\$4,203	\$4,544	\$5,203	\$3,411	\$3,780
Administration	1,468	1,436	1,524	729	1,050
Plant Operations	1,259	1,349	1,549	920	951
Food Service	410	438	496	382	369
Transportation	465	574	552	343	406
Student Support	376	513	593	594	512
Instruction Support	192	232	481	431	470
Other	33	2	8	12	22