

# Classroom Dollars and Proposition 301 Results

## Ray Unified School District

Pinal County

District size: Small  
 Students attending: 559  
 Number of schools: 3  
 Number of certified teachers: 43

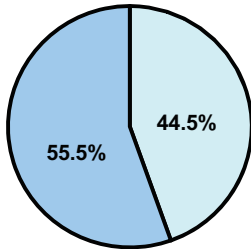
### Classroom Dollars

Fiscal year 2008 averages per pupil

District

State

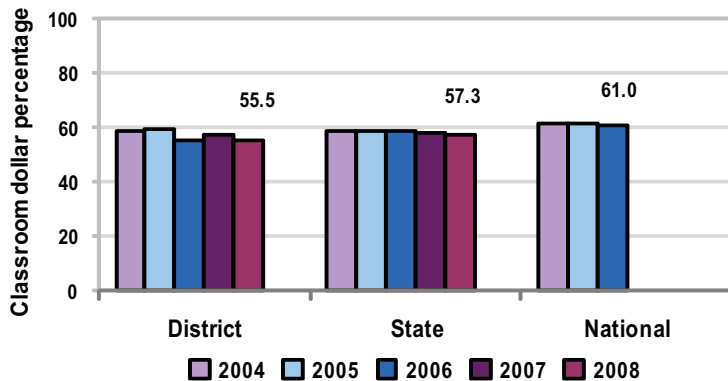
Classroom  
 \$5,249  
 \$4,480



Nonclassroom  
 \$4,203  
 \$3,333

Total  
 \$9,452  
 \$7,813

5-year comparison



### Expenditures by function

	Percentage					State 2008	National 2006
	2004	2005	District 2006	2007	2008		
Classroom dollars	58.3	59.2	55.4	57.5	55.5	57.3	61.0
Nonclassroom dollars:							
Administration	13.1	14.2	14.6	15.1	15.5	9.2	10.8
Plant operations	12.5	11.3	12.1	12.2	13.3	11.3	9.9
Food service	4.4	4.7	4.6	4.3	4.3	4.8	3.8
Transportation	4.3	4.9	4.2	4.7	5.0	4.4	4.2
Student support	4.7	4.1	7.3	4.5	4.1	7.4	5.2
Instruction support	2.4	1.3	1.5	1.4	2.0	5.4	4.9
Other	0.3	0.3	0.3	0.3	0.3	0.2	0.2

### Comparative Information

	District			State
	2006	2007	2008	2008
Student/teacher ratio	13.9	13.3	13.1	17.3
Average teacher salary	\$41,860	\$42,599	\$40,055	\$44,967
Average years' experience	9.5	10.3	10.2	8.1

Classroom dollar ranking: 107 of 230 districts.

### Proposition 301

#### District-reported 2008 results

##### Teacher pay

- On average, each teacher and counselor earned \$6,231 in additional salary.

##### Performance

- The District accomplished most of its goals, which were based on district and school performance.
- Elementary school students demonstrated growth in 4 of 5 core subject areas as measured by pre- and post-tests.
- Primary grade students also demonstrated reading and writing skills achievement through standardized assessments and the Six-Trait writing method.
- The high school had to earn a "Performing" or above label from ADE for AZ LEARNS.
- The goal not met called for increasing the student attendance rate.

##### Menu

- Monies were used solely for teacher compensation.