

# Classroom Dollars and Proposition 301 Results

## Red Mesa Unified School District

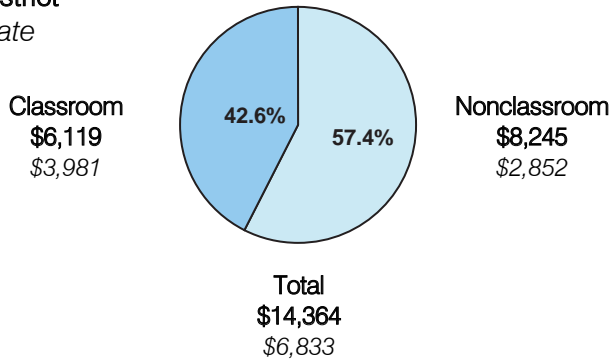
Apache County

District size: Medium  
 Students attending: 970  
 Number of schools: 4  
 Number of certified teachers: 73

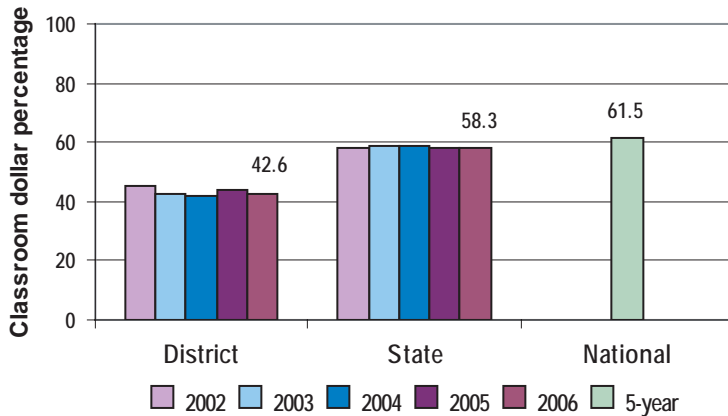
### Classroom Dollars

Fiscal year 2006 averages per pupil

District  
 State



### 5-year comparison



### Expenditures by function

	District					State 2006	National 5-year
	2002	2003	2004	2005	2006		
Classroom dollars	45.4	42.9	42.0	43.9	42.6	58.3	61.5
Nonclassroom dollars:							
Administration	13.4	14.4	13.2	14.3	16.0	9.4	11.0
Plant operations	15.9	16.1	15.5	14.1	14.3	11.2	9.6
Food service	4.4	4.0	4.9	3.9	3.2	4.7	3.9
Transportation	8.7	9.0	9.4	9.9	10.3	4.2	4.0
Student support	8.9	10.2	11.6	11.0	9.8	7.2	5.1
Instruction support	3.3	3.3	3.4	2.9	3.8	4.8	4.7
Other		0.1				0.2	0.2

### Comparative Information

	District			State 2006
	2004	2005	2006	
Student/teacher ratio	17.0	13.7	13.4	17.7
Average teacher salary	\$37,174	\$38,996	\$36,343	\$42,967
Average years' experience	7.5	7.5	7.8	8.3

Classroom dollar ranking: 213 of 229 districts.

### Proposition 301

#### District-reported 2006 results

##### Teacher pay

- On average, each teacher and librarian earned an additional \$1,600 in salary.

##### Performance

- The District accomplished most of its goals, which were based on district and school performance.
- Student achievement goals called for students to improve in reading, writing, and math.
- Each school improved student attendance by at least 5 percent.
- Teacher absences decreased by at least 10 percent from the prior fiscal year.
- Teachers participated in leadership activities and tutoring.
- The high school met its graduation rate goal.

##### Menu

- Monies were used solely to increase eligible employee compensation.