

Classroom Dollars and Proposition 301 Results

Red Mesa Unified School District

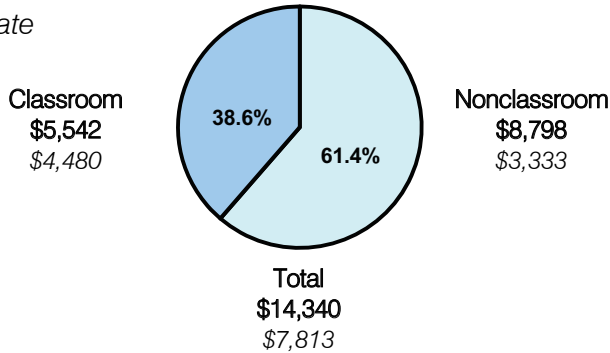
Apache County

District size: Medium
 Students attending: 801
 Number of schools: 5
 Number of certified teachers: 61

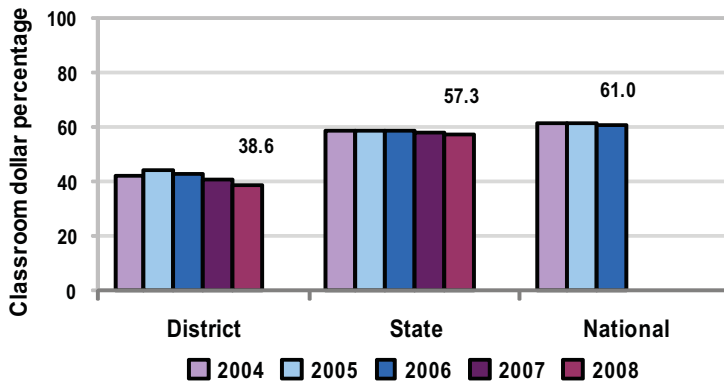
Classroom Dollars

Fiscal year 2008 averages per pupil

District
 State



5-year comparison



Expenditures by function

	Percentage					State 2008	National 2006
	District						
	2004	2005	2006	2007	2008		
Classroom dollars	42.0	43.9	42.6	40.4	38.6	57.3	61.0
Nonclassroom dollars:							
Administration	13.2	14.3	16.0	18.2	16.8	9.2	10.8
Plant operations	15.5	14.1	14.3	15.8	15.8	11.3	9.9
Food service	4.9	3.9	3.2	3.2	4.2	4.8	3.8
Transportation	9.4	9.9	10.3	10.6	10.9	4.4	4.2
Student support	11.6	11.0	9.8	8.1	12.4	7.4	5.2
Instruction support	3.4	2.9	3.8	3.3	1.3	5.4	4.9
Other				0.4		0.2	0.2

Comparative Information

	District			State 2008
	2006	2007	2008	
Student/teacher ratio	13.4	13.6	13.2	17.3
Average teacher salary	\$36,343	\$38,766	\$38,153	\$44,967
Average years' experience	7.8	8.4	9.6	8.1

Classroom dollar ranking: 215 of 230 districts.

Proposition 301

District-reported 2008 results

Teacher pay

- On average, each teacher earned \$3,486 in additional salary, which includes performance pay for fiscal year 2007 performance.

Performance

- The District accomplished most of its goals, which were based on district and school performance.
- Student achievement goals called for students to improve in reading comprehension and vocabulary as demonstrated by standardized test scores.
- The high schools met their graduation rate goals.
- Each school improved student attendance by at least 5 percent.
- Teachers worked to become highly qualified and were evaluated annually.
- Teacher-based committees met to develop school improvement plans.
- Other goals were linked to student and teacher attendance.

Menu

- Monies were used solely to increase eligible employee compensation.