

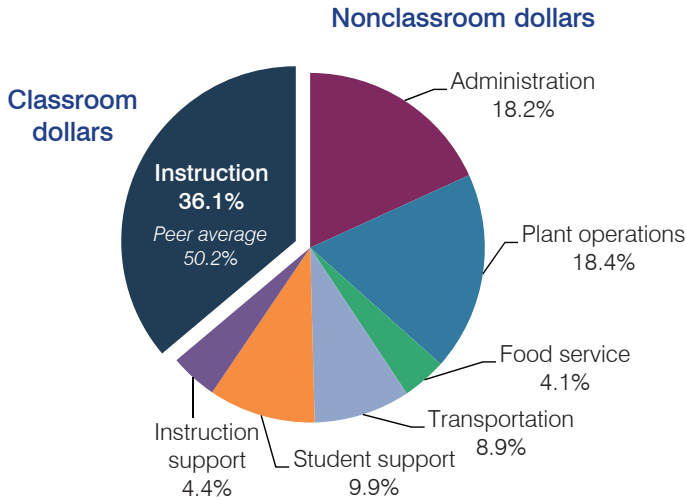
# Red Mesa Unified School District

Apache County  
 Efficiency peer groups 5 and T-10, Achievement peer group 7  
 Legislative district(s): 7

District size, location: Medium, Rural  
 Students attending: 698  
 Number of schools: 5

## OPERATIONAL EFFICIENCY

### Spending by operational area



### Efficiency measures relative to peer averages

Operational area	Measure	District	Peer average	State average
Administration	Cost per pupil	\$2,904	\$1,075	\$780
	Students per administrative position	25	58	67
Plant operations	Cost per square foot	\$8.98	\$4.90	\$6.09
	Square footage per student	326	258	153
Food service	Cost per meal equivalent	\$3.71	\$3.39	\$2.79
Transportation	Cost per mile	\$2.74	\$2.01	\$3.66
	Cost per rider	\$1,584	\$1,256	\$1,071

Very low Low Comparable High Very high

### Per pupil spending

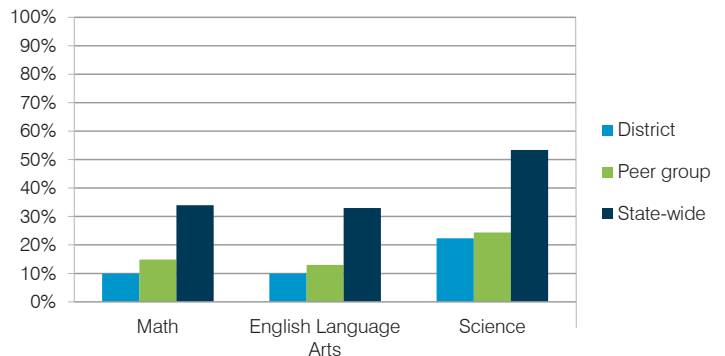
Spending by area	District		Peer average	State average
	2014	2015	2015	2015
Instruction	\$ 5,805	\$ 5,756	\$ 4,428	\$ 4,105
Administration	3,393	2,904	1,075	780
Plant operations	3,408	2,931	1,203	930
Food service	675	648	428	417
Transportation	2,035	1,419	498	371
Student support	2,464	1,588	623	613
Instruction support	576	705	353	442
<b>Total operational</b>	<b>\$ 18,356</b>	<b>\$ 15,951</b>	<b>\$ 8,608</b>	<b>\$ 7,658</b>
Land and buildings	\$ 160	\$ 7,388	\$ 504	\$ 641
Equipment	1,264	720	492	383
Interest	0	0	248	225
Other	30	77	57	150
<b>Total nonoperational</b>	<b>\$ 1,454</b>	<b>\$ 8,185</b>	<b>\$ 1,301</b>	<b>\$ 1,399</b>
<b>Total per pupil spending</b>	<b>\$ 19,810</b>	<b>\$ 24,136</b>	<b>\$ 9,909</b>	<b>\$ 9,057</b>

## STUDENT AND TEACHER MEASURES, FINANCIAL ASSESSMENT, AND REVENUE

### Student and teacher measures

Measure	District	Peer average	State average
Attendance rate	91%	92%	94%
Graduation rate (2014)	51%	72%	76%
Poverty rate (2014)	40%	41%	23%
Students per teacher	14.8	15.8	18.6
Average teacher salary	\$46,089	\$45,502	\$46,008
Average years of teacher experience	15.9	12.7	11.0
Percentage of teachers in first 3 years	7%	15%	20%

### Students who met state standards



### Financial stress assessment

Overall financial stress level: **Low**

Measure: 2013 through 2015	Assessment
Change in number of district students	Steady
Spending exceeded operating/capital budgets	No overspending
Spending increase election results	No election held
Operating reserve percentage (max. 4%), trend	3.5%, Varying
Years of capital reserve held	Impact Aid Fund reserve
Current financial and internal control status	Noncompliant

Low Moderate High

### Per pupil revenues

Revenues by source	District		Peer average	State average
	2014	2015	2015	2015
Federal	\$ 8,138	\$ 10,551	\$ 3,790	\$ 1,299
State	6,562	5,877	3,700	3,517
Local	1,062	754	4,105	4,248
<b>Total revenues per pupil</b>	<b>\$15,762</b>	<b>\$17,182</b>	<b>\$11,595</b>	<b>\$ 9,064</b>
<b>Select revenues from common sources</b>				
Equalization formula funding	\$ 7,538	\$ 7,165	\$ 5,693	\$ 5,303
Grants	2,172	1,885	1,675	1,167
Donations and tax credits	3	12	140	78
<b>Select revenues from less common sources</b>				
Desegregation	\$ 0	\$ 0	1 of 29	
Small school adjustment	0	0	0 of 29	
Federal impact aid	5,053	5,482	15 of 29	
Voter-approved levy increases	0	0	19 of 29	

# Red Mesa USD—page 2

## Classroom dollar percentage

Year:	2001	2002	2003	2004	2005	2006	2007	2008	2009	2010	2011	2012	2013	2014	2015
Percentage:	43.6	45.4	42.9	42.0	43.9	42.6	40.4	38.6	38.7	40.9	40.6	39.9	38.6	31.6	36.1

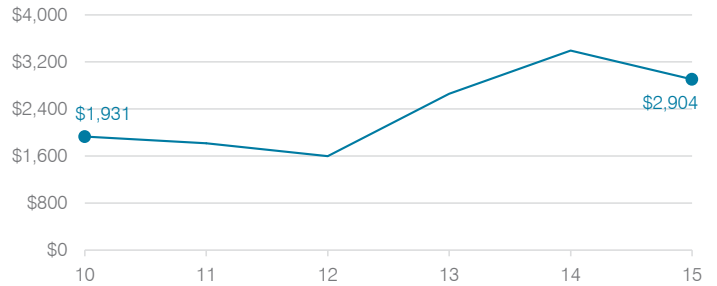
## OPERATIONAL TRENDS

Fiscal years as indicated

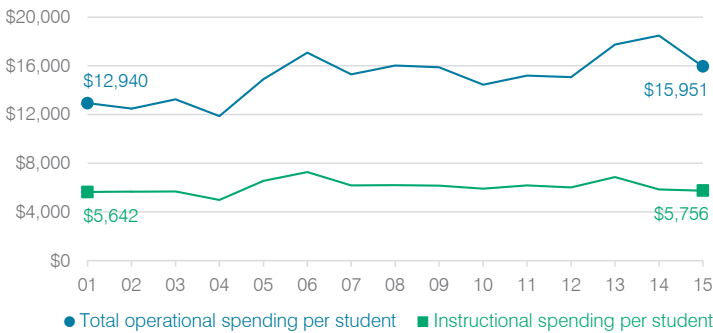
### 5-year spending trend (2010 through 2015)

Student enrollment decreased by 30 percent, which contributed to the 10 percent increase in total operational spending per pupil, adjusted for inflation. The percentage of dollars spent in the classroom decreased overall from 40.9 to 36.1 percent. Overall, as a percentage of total operational spending, administration, plant operations, and instruction support increased substantially.

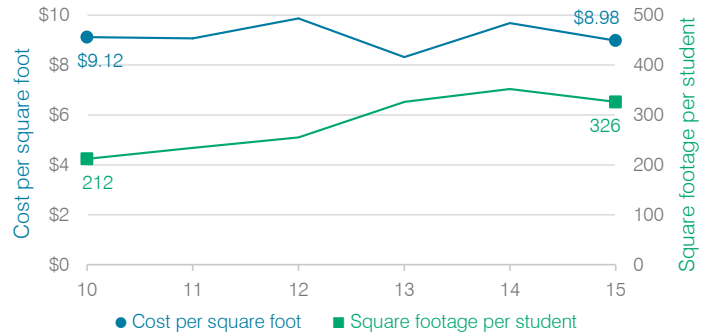
### Administrative cost per student



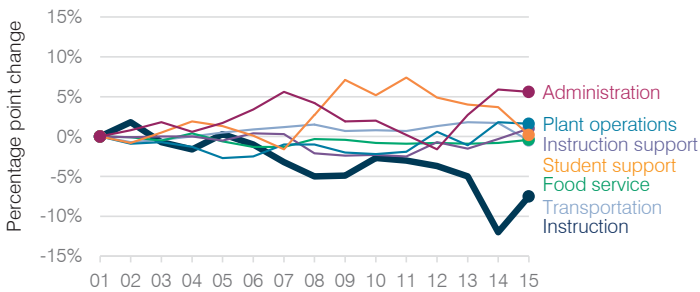
### Total operational and instructional spending per student (inflation adjusted to 2015 dollars)



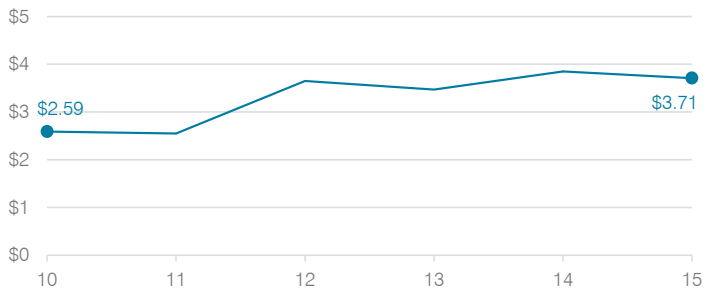
### Plant cost per square foot and square footage per student



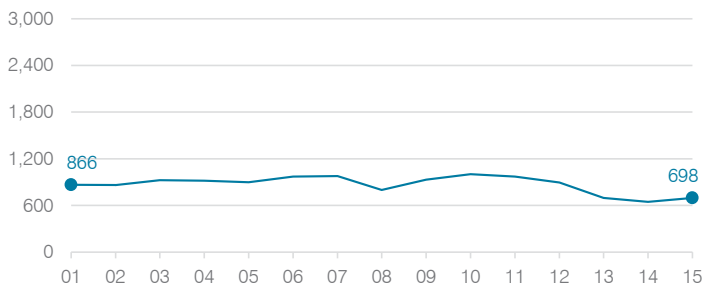
### Changes in operational spending percentages



### Food service cost per meal



### Students attending



### Transportation costs per mile and per rider

