

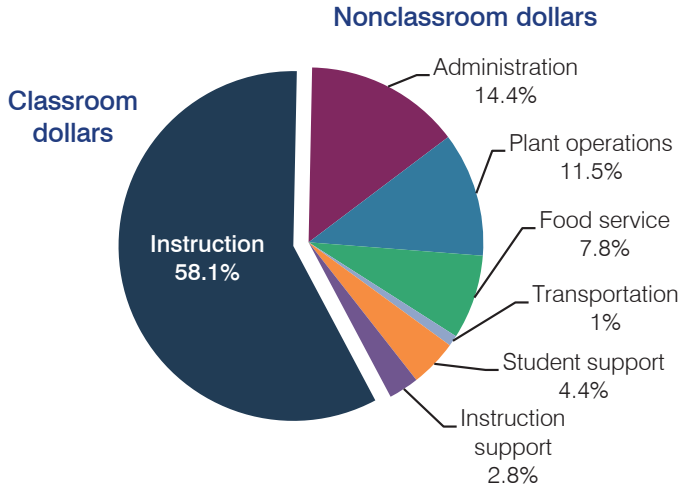
# Red Rock Elementary School District

Pinal County  
 Efficiency peer groups 10 and T-8, Achievement peer group 17  
 Legislative district(s): 11

District size, location: Small, Rural  
 Students attending: 281  
 Number of schools: 1

## OPERATIONAL EFFICIENCY

### Spending by operational area



### 5-year spending trend

Student enrollment more than doubled, which contributed to the 65 percent decrease in total spending per pupil. Spending in the classroom varied year to year, decreasing overall from 66.1 to 58.1 percent. Overall, spending on plant operations, food service, and student support increased substantially, while spending on administration decreased substantially.

### Cost measures relative to peer averages

Operational area	Measure	District	Peer average	State average
Administration	Cost per pupil	\$962	\$1,130	\$746
	Students per administrator	54	55	67
Plant operations	Cost per square foot	\$10.34	\$6.14	\$6.03
	Square footage per student	74	157	153
Food service	Cost per meal equivalent	\$2.66	\$2.74	\$2.58
Transportation	Cost per mile	\$0.74	\$2.52	\$3.55
	Cost per rider	\$151	\$797	\$1,015

Very low   Low   Comparable   High   Very high

### Per pupil spending by operational area

	District		Peer average	State average	National average
	2012	2013	2013	2013	2011
<b>Total</b>	<b>\$6,617</b>	<b>\$6,678</b>	<b>\$8,518</b>	<b>\$7,496</b>	<b>\$10,658</b>
<b>Classroom dollars</b>	<b>3,423</b>	<b>3,882</b>	<b>4,624</b>	<b>4,031</b>	<b>6,520</b>
<b>Nonclassroom dollars:</b>	<b>3,194</b>	<b>2,796</b>	<b>3,894</b>	<b>3,465</b>	<b>4,138</b>
Administration	1,161	962	1,130	746	1,138
Plant operations	837	770	976	924	1,015
Food service	483	517	511	396	412
Transportation	54	70	537	369	452
Student support	479	291	499	582	593
Instruction support	180	186	241	448	528

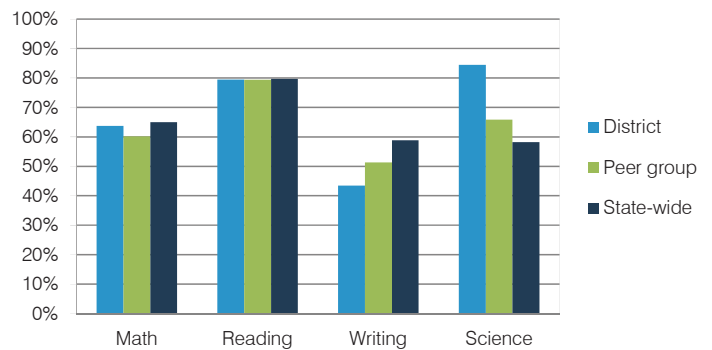
## STUDENT ACHIEVEMENT, TEACHER MEASURES, AND FINANCIAL ASSESSMENT

### ADE-reported district and school letter grades

District grade: **B**

Grade	Number of schools	Percentage of schools
A	0	0%
B	1	100%
C	0	0%
D	0	0%
F	0	0%
Not rated	0	0%

### Students who met state standards (AIMS)



### Student and teacher measures

Measure	District	Peer average	State average
Attendance rate	95%	95%	94%
Graduation rate (2012)	N/A	N/A	N/A
Poverty rate (2012)	17%	19%	25%
Students per teacher	18.8	11.0	18.3
Average teacher salary	\$43,560	\$42,053	\$45,264
Amount from Proposition 301	\$3,427	\$2,981	\$3,784
Average years of teacher experience	13.1	12.6	10.9
Percentage of teachers in first 3 years	7%	11%	19%

### Financial stress assessment

Overall financial stress level: **Low**

Measure: 2011 through 2013	Assessment
Number of students attending district	Steady
Spending exceeded operating/capital budgets	No overspending
Spending increase election results	No election held
Operating reserve percentage (max. 4%), trend	4.0%, Steady
Years of capital reserve held	More than 3 years
Current financial and internal control status	Compliant

