

# Classroom Dollars and Proposition 301 Results

## Riverside Elementary School District

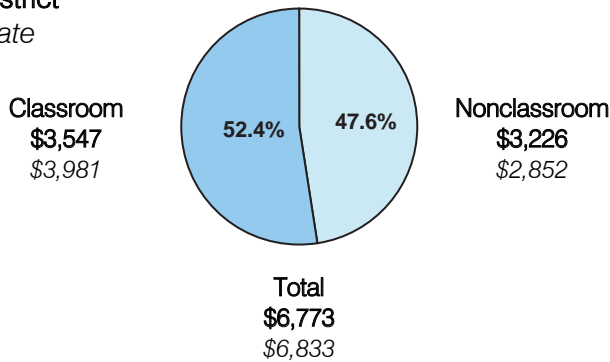
Maricopa County

District size: Medium  
 Students attending: 798  
 Number of schools: 2  
 Number of certified teachers: 30

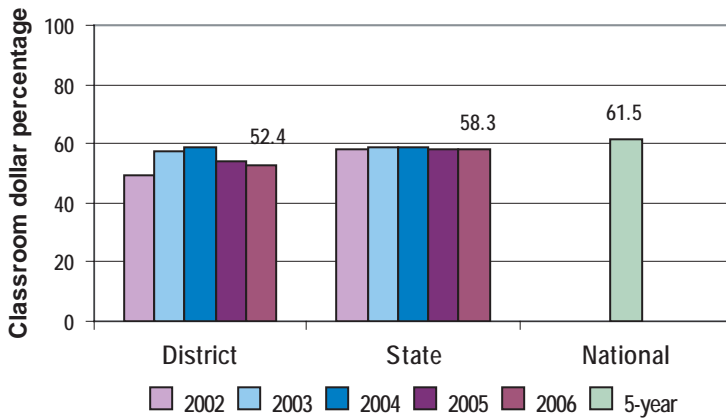
### Classroom Dollars

Fiscal year 2006 averages per pupil

District  
 State



### 5-year comparison



### Expenditures by function

	District					State 2006	National 5-year
	2002	2003	2004	2005	2006		
Classroom dollars	49.0	57.3	58.6	53.8	52.4	58.3	61.5
Nonclassroom dollars:							
Administration	13.7	12.0	11.6	14.1	15.2	9.4	11.0
Plant operations	11.3	12.0	10.7	10.3	12.0	11.2	9.6
Food service	8.9	6.9	7.7	7.5	7.0	4.7	3.9
Transportation	5.6	2.9	2.6	3.1	2.6	4.2	4.0
Student support	8.6	5.8	5.7	9.4	9.5	7.2	5.1
Instruction support	2.9	3.1	3.1	1.8	1.3	4.8	4.7
Other						0.2	0.2

### Comparative Information

	District			State 2006
	2004	2005	2006	
Student/teacher ratio	21.8	22.7	26.6	17.7
Average teacher salary	\$35,009	\$36,374	\$40,582	\$42,967
Average years' experience	5.9	6.2	3.7	8.3

Classroom dollar ranking: 156 of 229 districts.

### Proposition 301

#### District-reported 2006 results

##### Teacher pay

- On average, each teacher earned an additional \$2,440 in salary.

##### Performance

- The District accomplished its goals, which were similar to the prior fiscal year's goals and were based on district and individual performance.
- Teachers participated in 30 hours of professional development activities.
- Other goals were linked to parent participation in parent-teacher conferences and curriculum mapping.

##### Menu

- Monies continued to be used to pay for 2 teachers to reduce class sizes from 35 to 23 students per class.