

Riverside Elementary School District

Maricopa County

Efficiency peer groups 8 and T-2, Achievement peer group 14¹

Legislative district(s): 19

District size, location:

Medium, City

Students attending:

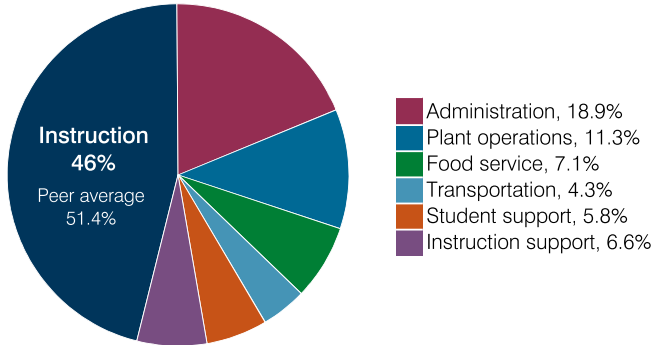
875

Number of schools:

3

OPERATIONAL EFFICIENCY

Spending by operational area



Efficiency measures relative to peer averages

Operational area	Measure	District	Peer average	State average
Administration	Cost per pupil	\$1,735	\$1,025	\$860
	Students per administrative position	42	67	66
Plant operations	Cost per square foot	\$3.58	\$6.61	\$6.34
	Square footage per student	290	143	156
Food service	Cost per meal	\$2.65	\$2.92	\$3.02
Transportation	Cost per mile	\$2.99	\$5.91	\$4.05
	Cost per rider	\$776	\$1,232	\$1,301

Very low Low Comparable High Very high

Per pupil spending

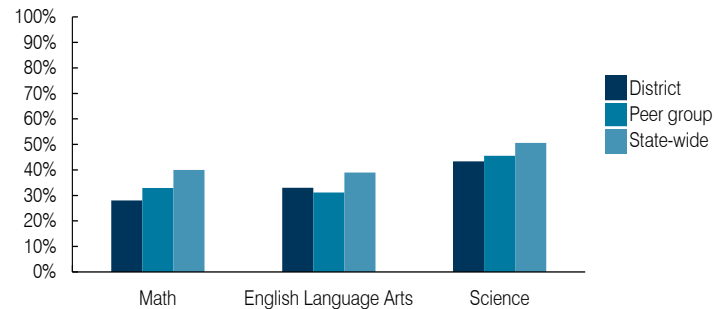
Spending by area	District		Peer average 2018	State average 2018
	2017	2018		
Instruction	\$ 4,000	\$ 4,221	\$ 4,392	\$ 4,480
Administration	1,453	1,735	1,025	860
Plant operations	1,052	1,040	971	988
Food service	622	653	659	425
Transportation	368	392	331	388
Student support	511	535	631	693
Instruction support	614	599	546	462
Total operational	8,620	9,175	8,555	8,296
Land and buildings	6,056	6,292	1,140	827
Equipment	3,526	3,556	697	409
Interest	1,655	1,885	327	228
Other	71	291	172	169
Total nonoperational	11,308	12,024	2,336	1,633
Total per pupil spending	\$ 19,928	\$ 21,199	\$ 10,891	\$ 9,929

STUDENT ACHIEVEMENT, STUDENT AND TEACHER MEASURES, AND REVENUES

ADE-assigned school letter grades

Grade	Number of schools	Percentage of schools
A	1	33%
B	0	0%
C	2	67%
D	0	0%
F	0	0%

Students who passed State assessments



Student and teacher measures

Measure	District	Peer average	State average
Attendance rate	93%	94%	94%
Graduation rate (2017)	N/A	N/A	N/A
Poverty rate (2017)	25%	28%	19%
Special education population	12%	12%	12%
Students per teacher	20.8	18.9	18.4
Average teacher salary	\$41,720	\$46,164	\$48,951
Amount from Prop 301	\$4,246	\$5,459	\$6,411
Average years of teacher experience	6.3	9.3	11.4
Percentage of teachers in first 3 years	11%	26%	19%

Per pupil revenues

Revenues by source	District		Peer average 2018	State average 2018
	2017	2018		
Federal	\$ 2,212	\$ 1,782	\$ 1,723	\$ 1,317
State	510	709	3,921	4,011
Local	14,059	16,995	4,869	4,592
Total per pupil revenues	\$ 16,781	\$ 19,486	\$ 10,513	\$ 9,920

Select revenues from common sources

Source	District	Peer average	State average
Equalization formula funding	\$ 5,183	\$ 5,416	\$ 5,175
Grants	1,902	1,638	1,843
Donations and tax credits	37	37	54

Select revenues from less common sources

Source	District	Peer average	State average
Desegregation	\$ 0	\$ 0	4 of 19
Small school adjustment	0	0	0 of 19
Federal impact aid	0	0	0 of 19
Voter-approved levy increases	8,015	9,667	19 of 19

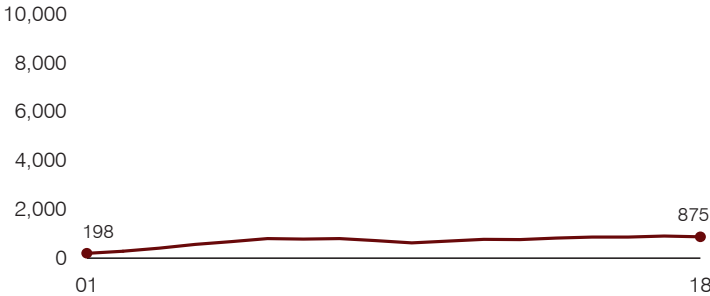
¹ See Appendix A for information such as districts included in each peer group and Appendix B for sources and methodology.

Instructional spending percentage

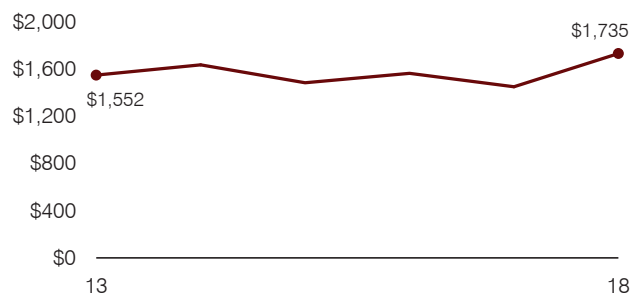
Year: 2001 2002 2003 2004 2005 2006 2007 2008 2009 2010 2011 2012 2013 2014 2015 2016 2017 2018
 Percentage: 48.5 49.0 57.3 58.6 53.8 52.4 50.2 57.5 57.7 51.5 46.0 46.0 45.8 44.3 45.3 44.4 46.4 46.0

TRENDS AND FINANCIAL STRESS ASSESSMENT
 Fiscal years as indicated

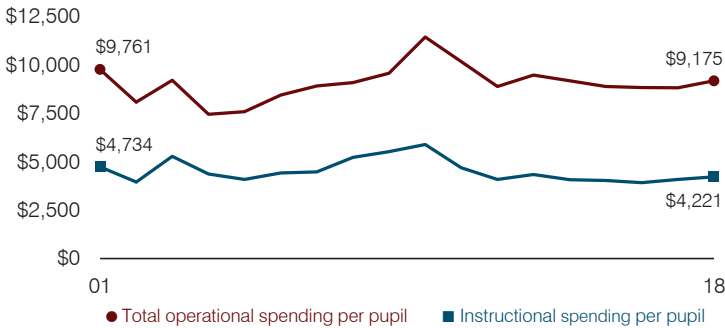
Students attending



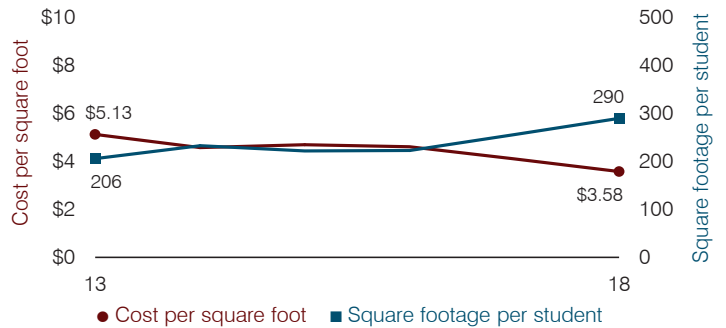
Administrative cost per pupil



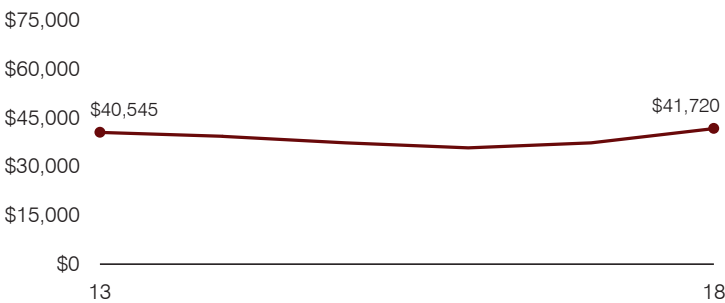
Total operational and instructional spending per pupil (inflation adjusted to 2018 dollars)



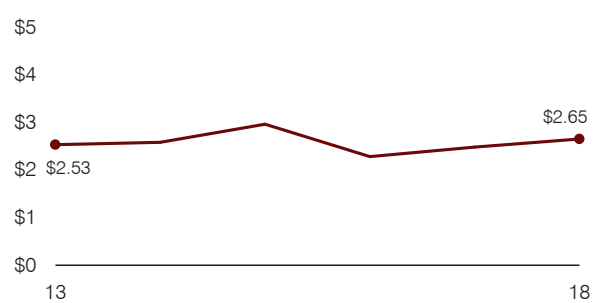
Plant cost per square foot and square footage per student



Average teacher salary



Food service cost per meal



Financial stress assessment

Overall financial stress level: **Low**

Measure: 2016 through 2018	Assessment
Change in number of district students	Steady
Spending exceeded operating/capital budgets	No overspending
Spending increase election results	No election held
Operating reserve percentage, Trend	4.4%, Decreasing
Years of capital reserve held	1 to 3 years
Current financial and internal control status	Compliant

Low
Moderate
High

Transportation costs per mile and per rider

