

Riverside Elementary School District

Maricopa County
Operational peer group: J
Legislative districts: 16

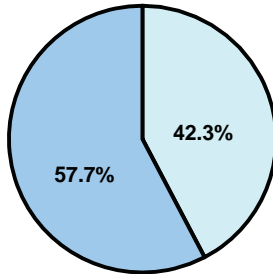
District size: Medium
Students attending: 718
Number of schools: 2

OPERATIONAL EFFICIENCY

Average per-pupil spending

District
State

Classroom
\$4,780
\$4,497



Nonclassroom
\$3,502
\$3,411

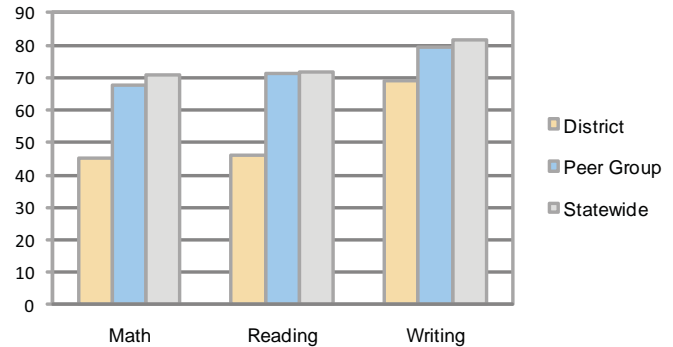
Total
\$8,282
\$7,908

5-year trend

Total spending per pupil increased by 48 percent. Spending in the classroom was very inconsistent year to year and decreased overall from 58.6 to 57.7 percent. Spending on plant operations increased significantly, spending on administration and student support varied year to year, and spending in other nonclassroom areas remained fairly stable.

STUDENT ACHIEVEMENT AND TEACHER INFORMATION

Percentage of students meeting state standards (AIMS)



Adequate Yearly Progress (AYP) toward federal goals

1 school did not meet applicable AYP objectives for NCLB because some students did not demonstrate sufficient academic progress. 1 school did not receive an AYP rating.

Student and teacher information

Measure	District	Peer average	State average
Attendance rate	94%	95%	95%
Graduation rate (2008)	N/A	70%	75%
Poverty rate	18%	15%	19%
Student/teacher ratio	15.9	16.8	17.1
Average teacher salary	\$42,221	\$42,842	\$45,209
Average years' experience	4.1	10.1	8.3
Percent of teachers in first 3 years	61%	24%	16%

District's cost measures relative to peer group

Operational Area	Measure	District	Peer Average	State Average
Administration	Cost per pupil	\$980	\$921	\$729
	Students per administrator	60	64	66
Plant Operations	Cost per square foot	\$5.03	\$6.71	\$6.40
	Square footage per student	NR	125	144
Food Service	Cost per meal equivalent	\$2.70	\$2.56	\$2.53
Transportation	Cost per mile	\$2.90	\$3.04	\$3.36
	Miles per rider	190	145	271

Very Low Low Comparable High Very High

Per-pupil spending by function

	District		Peer	State	National
	2008	2009	2009	2009	2007
Total	\$7,754	\$8,282	\$7,752	\$7,908	\$9,683
Classroom dollars	\$4,365	\$4,780	\$4,151	\$4,497	\$5,903
Nonclassroom dollars:	\$3,389	\$3,502	\$3,601	\$3,411	\$3,780
Administration	899	980	921	729	1,050
Plant Operations	936	1,097	879	920	951
Food Service	489	522	524	382	369
Transportation	280	215	410	343	406
Student Support	417	469	483	594	512
Instruction Support	368	219	384	431	470
Other	0	0	0	12	22

Proposition 301

Teacher pay

On average, each teacher earned \$4,995 in additional salary.

Performance pay plan goals and results

Type of goal	Goal met?
Student achievement	■
Dropout/ graduation rates	■
Student attendance	■
Parent/student satisfaction	■
Teacher attendance	■
Teacher professional development	■
Teacher evaluations	■
Tutoring	■
Other	■

■ = yes, □ = no, and ▴ = partially