

Classroom Dollars and Proposition 301 Results

Riverside Elementary School District

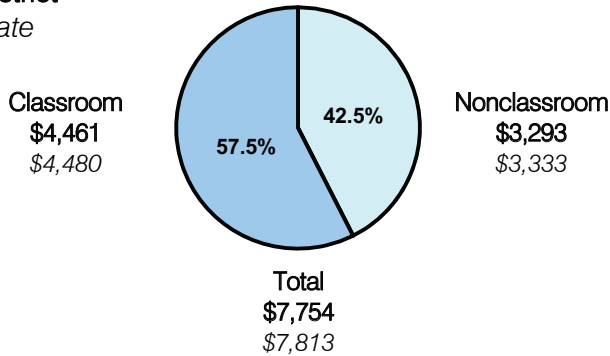
Maricopa County

District size: Medium
 Students attending: 801
 Number of schools: 2
 Number of certified teachers: 38

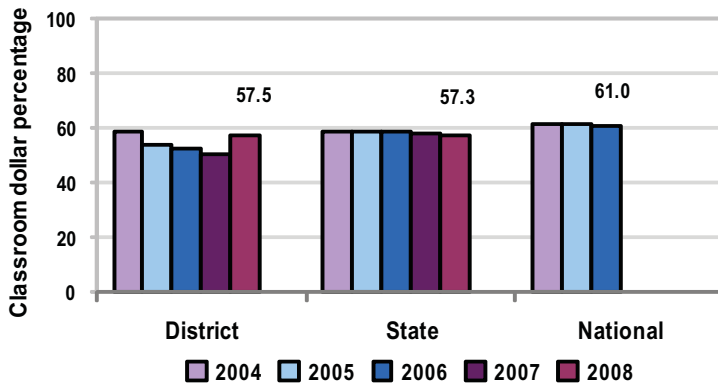
Classroom Dollars

Fiscal year 2008 averages per pupil

District
 State



5-year comparison



Expenditures by function

	District					State 2008	National 2006
	2004	2005	2006	2007	2008		
Classroom dollars	58.6	53.8	52.4	50.2	57.5	57.3	61.0
Nonclassroom dollars:							
Administration	11.6	14.1	15.2	14.5	12.9	9.2	10.8
Plant operations	10.7	10.3	12.0	12.4	10.9	11.3	9.9
Food service	7.7	7.5	7.0	6.8	6.3	4.8	3.8
Transportation	2.6	3.1	2.6	3.2	3.4	4.4	4.2
Student support	5.7	9.4	9.5	10.9	5.4	7.4	5.2
Instruction support	3.1	1.8	1.3	2.0	3.6	5.4	4.9
Other						0.2	0.2

Comparative Information

	District			State 2008
	2006	2007	2008	
Student/teacher ratio	26.6	40.9	21.1	17.3
Average teacher salary	\$40,582	\$40,081	\$44,315	\$44,967
Average years' experience	3.7	3.6	4.4	8.1

Classroom dollar ranking: 69 of 230 districts.

Proposition 301

District-reported 2008 results

Teacher pay

- On average, each teacher earned an additional \$3,382 in salary.

Performance

- The District accomplished its goals, which were similar to the prior fiscal year's goals and were based on district and individual performance.
- Students' AIMS test scores increased by 10 percent.
- Teachers participated in 30 hours of professional development activities.
- Parents attended at least 90 percent of parent/teacher conferences.

Menu

- The District did not report spending from menu monies.