

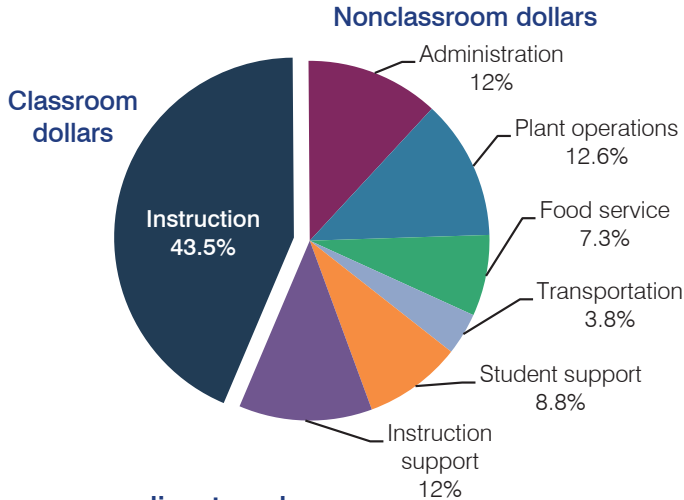
# Roosevelt Elementary School District

Maricopa County  
 Efficiency peer groups 7 and T-2, Achievement peer group 14  
 Legislative district(s): 27

District size, location: Large, City  
 Students attending: 9,557  
 Number of schools: 18

## OPERATIONAL EFFICIENCY

### Spending by operational area



### 5-year spending trend

Total spending per pupil increased by 5 percent. Spending in the classroom decreased from 56.4 to 43.5 percent. Overall, spending on plant operations, student support, and instruction support increased substantially and spending on food service and transportation increased. Spending on administration varied year to year.

### Cost measures relative to peer averages

Operational area	Measure	District	Peer average	State average
Administration	Cost per pupil	\$1,061	\$664	\$746
	Students per administrator	52	76	67
Plant operations	Cost per square foot	\$6.90	\$6.19	\$6.03
	Square footage per student	163	130	153
Food service	Cost per meal equivalent	\$2.66	\$2.52	\$2.58
Transportation	Cost per mile	\$5.83	\$5.18	\$3.55
	Cost per rider	\$1,150	\$824	\$1,015

Very low Low Comparable High Very high

### Per pupil spending by operational area

	District		Peer average	State average	National average
	2012	2013	2013	2013	2011
<b>Total</b>	<b>\$8,627</b>	<b>\$8,861</b>	<b>\$7,109</b>	<b>\$7,496</b>	<b>\$10,658</b>
<b>Classroom dollars</b>	<b>4,005</b>	<b>3,853</b>	<b>3,883</b>	<b>4,031</b>	<b>6,520</b>
<b>Nonclassroom dollars:</b>	<b>4,622</b>	<b>5,008</b>	<b>3,226</b>	<b>3,465</b>	<b>4,138</b>
Administration	973	1,061	664	746	1,138
Plant operations	1,008	1,122	766	924	1,015
Food service	607	644	501	396	412
Transportation	321	335	298	369	452
Student support	723	784	520	582	593
Instruction support	990	1,062	477	448	528

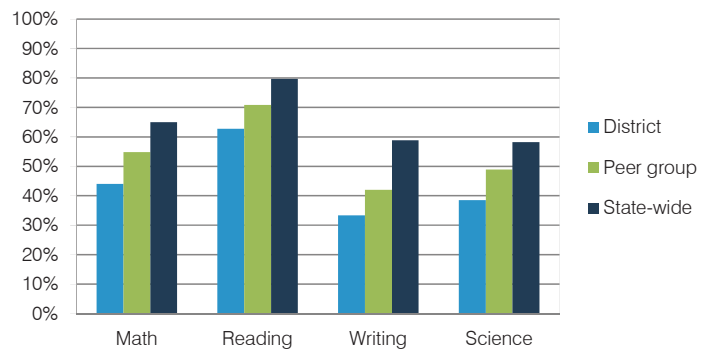
## STUDENT ACHIEVEMENT, TEACHER MEASURES, AND FINANCIAL ASSESSMENT

### ADE-reported district and school letter grades

District grade: **C**

Grade	Number of schools	Percentage of schools
A	1	6%
B	2	11%
C	6	33%
D	8	44%
F	0	0%
Not rated	1	6%

### Students who met state standards (AIMS)



### Student and teacher measures

Measure	District	Peer average	State average
Attendance rate	94%	95%	94%
Graduation rate (2012)	N/A	N/A	N/A
Poverty rate (2012)	38%	37%	25%
Students per teacher	18.9	17.1	18.3
Average teacher salary	\$37,446	\$42,646	\$45,264
Amount from Proposition 301	\$1,050	\$2,598	\$3,784
Average years of teacher experience	8.0	9.5	10.9
Percentage of teachers in first 3 years	30%	24%	19%

### Financial stress assessment

Overall financial stress level: **Moderate**

Measure: 2011 through 2013

Measure	Assessment
Number of students attending district	Moderate decrease
Spending exceeded operating/capital budgets	Operating only
Spending increase election results	Voter-approved
Operating reserve percentage (max. 4%), trend	0.5%, Varying
Years of capital reserve held	1 to 3 years
Current financial and internal control status	Compliant

Stress level

