

# Classroom Dollars and Proposition 301 Results

## Roosevelt Elementary School District

Maricopa County

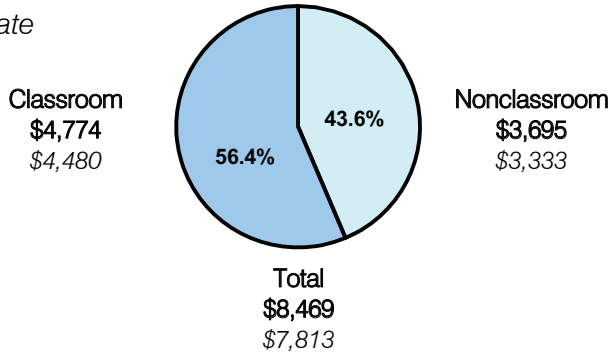
District size: Large  
 Students attending: 11,790  
 Number of schools: 21  
 Number of certified teachers: 702

### Classroom Dollars

Fiscal year 2008 averages per pupil

District

State

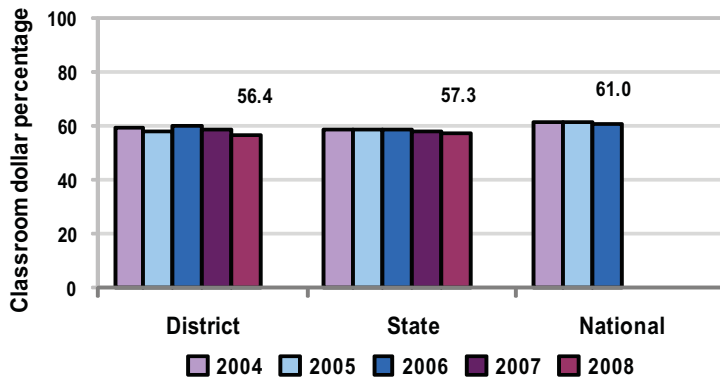


### Comparative Information

	District			State
	2006	2007	2008	2008
Student/teacher ratio	15.2	17.2	16.8	17.3
Average teacher salary	\$43,451	\$46,597	\$46,420	\$44,967
Average years' experience	7.4	7.6	7.2	8.1

Classroom dollar ranking: 94 of 230 districts.

### 5-year comparison



### Expenditures by function

	District					State	National
	2004	2005	2006	2007	2008	2008	2006
Classroom dollars	59.1	58.2	59.7	58.6	56.4	57.3	61.0
Nonclassroom dollars:							
Administration	10.2	10.5	10.2	10.7	12.3	9.2	10.8
Plant operations	11.5	10.9	10.4	9.7	9.5	11.3	9.9
Food service	6.1	6.1	5.9	6.3	5.9	4.8	3.8
Transportation	2.5	2.8	2.8	2.6	2.6	4.4	4.2
Student support	4.1	3.6	3.6	5.5	6.1	7.4	5.2
Instruction support	6.5	7.8	7.4	6.6	7.2	5.4	4.9
Other		0.1				0.2	0.2

### Proposition 301

#### District-reported 2008 results

##### Teacher pay

- On average, each teacher and librarian earned \$5,794 in additional salary, and each speech pathologist and school psychologist earned between \$2,402 and 3,392 in additional salary.

##### Performance

- The District accomplished its goals, which were similar to the prior fiscal year's goals and were based on school and individual performance.
- At least 5 percent of students who previously scored below the 50th-percentile on standardized tests moved above the 50th-percentile.
- 75 percent of special education students mastered their Individual Education Plan goals.
- 75 percent of kindergarten through 3rd-grade students showed growth in reading skills.
- Eligible employees participated in 6 hours of professional development activities focused on improving reading at their school.
- Through a parent night activity, teachers informed parents of their child's progress and how parents can help their children attain higher academic achievement.

##### Menu

- Monies were used to increase eligible employee compensation and to pay eligible employees for preparation of the performance pay plan.