

Classroom Dollars and Proposition 301 Results

Roosevelt Elementary School District

Maricopa County

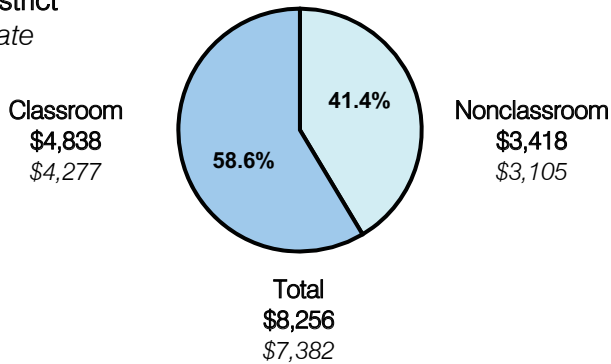
District size: Large
 Students attending: 11,902
 Number of schools: 21
 Number of certified teachers: 691

Classroom Dollars

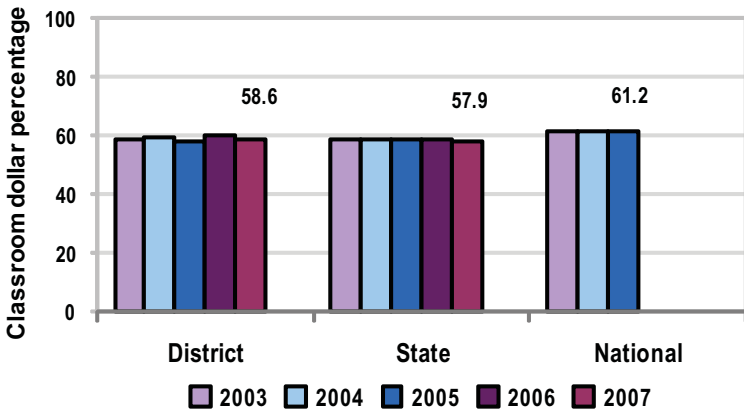
Fiscal year 2007 averages per pupil

District

State



5-year comparison



Expenditures by function

	District					State 2007	National 2005
	2003	2004	2005	2006	2007		
Classroom dollars	58.6	59.1	58.2	59.7	58.6	57.9	61.2
Nonclassroom dollars:							
Administration	10.8	10.2	10.5	10.2	10.7	9.5	11.0
Plant operations	11.5	11.5	10.9	10.4	9.7	11.3	9.6
Food service	6.4	6.1	6.1	5.9	6.3	4.7	3.9
Transportation	2.5	2.5	2.8	2.8	2.6	4.3	4.1
Student support	5.4	4.1	3.6	3.6	5.5	7.3	5.2
Instruction support	4.8	6.5	7.8	7.4	6.6	4.8	4.8
Other			0.1			0.2	0.2

Comparative Information

	District			State 2007
	2005	2006	2007	
Student/teacher ratio	17.8	15.2	17.2	17.4
Average teacher salary	\$42,397	\$43,451	\$46,597	\$43,833
Average years' experience	8.1	7.4	7.6	8.1

Classroom dollar ranking: 59 of 229 districts.

Proposition 301

District-reported 2007 results

Teacher pay

- On average, each teacher, librarian, speech pathologist, and counselor earned an additional \$5,017 in salary.

Performance

- The District accomplished its goals, which were based on school and individual performance.
- At least 5 percent of students who previously scored below the 50th-percentile on standardized tests reached the 50th-percentile.
- 75 percent of special education students mastered their Individual Education Plan goals.
- 75 percent of kindergarten through 3rd-grade students showed growth in reading skills.
- Eligible employees participated in 8 hours of professional development activities focused on reading, developed and implemented family workshops/events to establish home reading programs, and participated in tutoring activities.

Menu

- Monies were used to pay for 8 teachers to help reduce class sizes. As a result, 8 classrooms' sizes were reduced from 26 to 24 students.
- Monies were also used to increase eligible employee compensation.