

# Round Valley Unified School District

Apache County

Efficiency peer groups 5 and T-10, Achievement peer group 5<sup>1</sup>

Legislative district(s): 7

District size, location:

Medium, Town

Students attending:

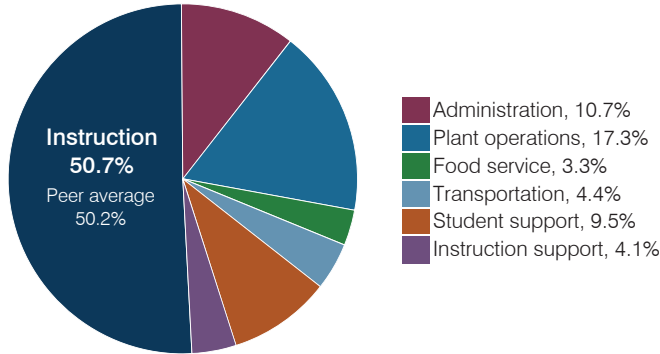
1,246

Number of schools:

3

## OPERATIONAL EFFICIENCY

### Spending by operational area



### Efficiency measures relative to peer averages

Operational area	Measure	District	Peer average	State average
Administration	Cost per pupil	\$848	\$1,102	\$844
	Students per administrative position	63	53	67
Plant operations	Cost per square foot	\$3.21	\$5.20	\$6.30
	Square footage per student	426	263	155
Food service	Cost per meal	\$4.79	\$3.54	\$2.88
Transportation	Cost per mile	\$2.11	\$1.93	\$3.84
	Cost per rider	\$725	\$1,267	\$1,198

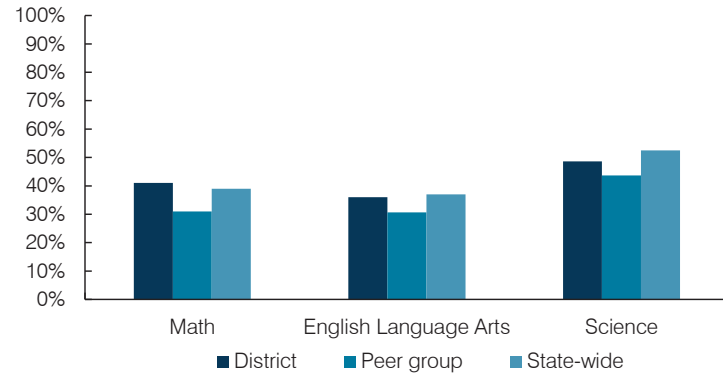
Very low   Low   Comparable   High   Very high

### Per pupil spending

Spending by area	District		Peer average 2017	State average 2017
	2016	2017		
Instruction	\$ 4,463	\$ 3,991	\$ 4,541	\$ 4,377
Administration	883	848	1,102	844
Plant operations	1,444	1,367	1,289	977
Food service	301	262	396	422
Transportation	374	344	488	381
Student support	863	746	632	679
Instruction support	406	321	346	461
<b>Total operational</b>	<b>\$ 8,734</b>	<b>\$ 7,879</b>	<b>\$ 8,794</b>	<b>\$ 8,141</b>
Land and buildings	\$ 355	\$ 246	\$ 764	\$ 691
Equipment	171	41	536	424
Interest	207	184	221	236
Other	26	1	78	161
<b>Total nonoperational</b>	<b>\$ 759</b>	<b>\$ 472</b>	<b>\$ 1,599</b>	<b>\$ 1,512</b>
<b>Total per pupil spending</b>	<b>\$ 9,493</b>	<b>\$ 8,351</b>	<b>\$ 10,393</b>	<b>\$ 9,653</b>

## STUDENT ACHIEVEMENT, STUDENT AND TEACHER MEASURES, AND REVENUES

### Students who passed state assessments



### Student and teacher measures

Measure	District	Peer average	State average
Attendance rate	92%	93%	94%
Graduation rate (2016)	83%	85%	80%
Poverty rate (2016)	25%	24%	22%
Special education population	15%	13%	12%
Students per teacher	20.1	17.0	18.5
Average teacher salary	\$41,845	\$44,553	\$48,372
Amount from Prop 301	\$6,546	\$5,512	\$5,840
Average years of teacher experience	12.1	12.8	11.3
Percentage of teachers in first 3 years	17%	16%	19%

### Per pupil revenues

Revenues by source	District		Peer average 2017	State average 2017
	2016	2017		
Federal	\$ 876	\$ 1,048	\$ 3,999	\$ 1,318
State	975	905	4,066	3,831
Local	7,223	6,038	4,210	4,443
<b>Total per pupil revenues</b>	<b>\$ 9,074</b>	<b>\$ 7,991</b>	<b>\$ 12,275</b>	<b>\$ 9,592</b>

### Select revenues from common sources

	District 2016	District 2017	Peer average 2017	State average 2017
Equalization formula funding	\$ 5,659	\$ 5,407	\$ 5,929	\$ 5,503
Amount from Prop 123	245	236	243	245
Prop 123 additional funding	51	48	49	46
Grants	1,237	1,351	1,751	1,185
Donations and tax credits	59	45	138	89

### Select revenues from less common sources

	District 2016	District 2017	Number of peers receiving
Desegregation	\$ 0	\$ 0	1 of 29
Small school adjustment	0	0	0 of 29
Federal impact aid	0	0	14 of 29
Voter-approved levy increases	1,609	1,238	20 of 29

<sup>1</sup> See Appendix A for information such as districts included in each peer group and Appendix B for sources and methodology.

**Instructional spending percentage**

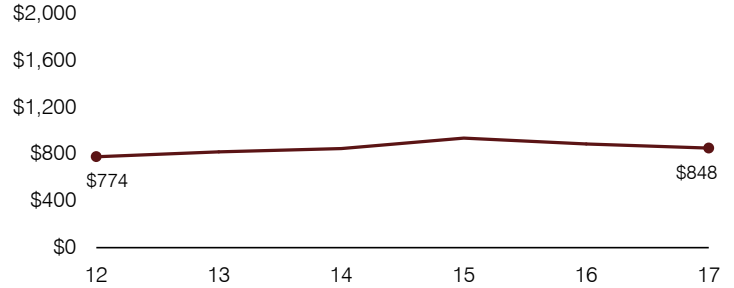
Year:	2001	2002	2003	2004	2005	2006	2007	2008	2009	2010	2011	2012	2013	2014	2015	2016	2017
Percentage:	58.3	56.6	55.4	55.0	55.1	52.5	54.2	54.3	52.8	52.5	53.5	52.6	51.8	52.3	50.6	51.1	50.7

**OPERATIONAL TRENDS AND FINANCIAL STRESS ASSESSMENT**  
Fiscal years as indicated

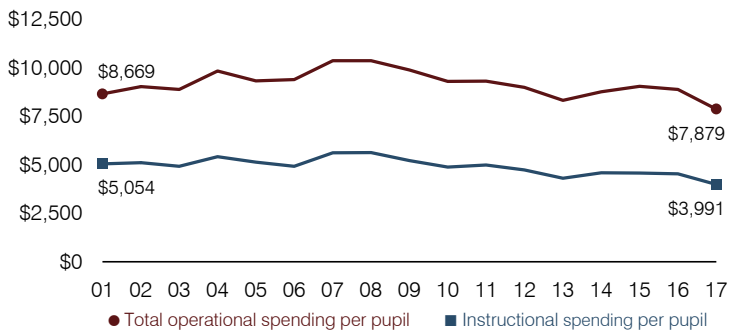
**5-year spending trend (2012 through 2017)**

Total operational spending per pupil, adjusted for inflation, decreased by 12 percent. The percentage of dollars spent on instruction decreased overall from 52.6 to 50.7 percent. Overall, as a percentage of total operational spending, administration and instruction support increased, while plant operations decreased slightly. Most other noninstructional areas remained stable.

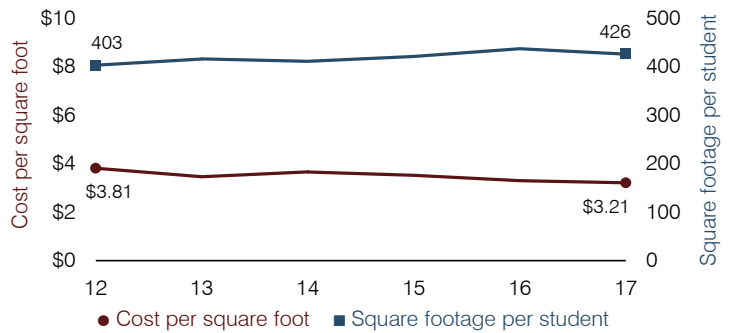
**Administrative cost per pupil**



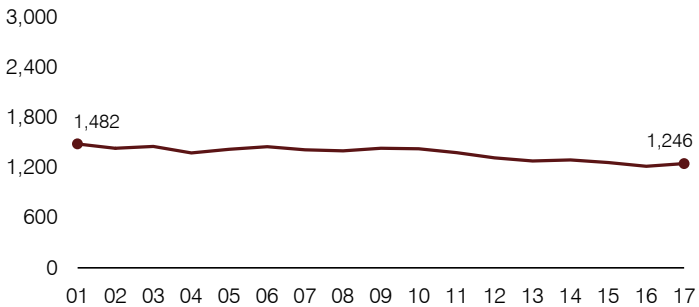
**Total operational and instructional spending per pupil (inflation adjusted to 2017 dollars)**



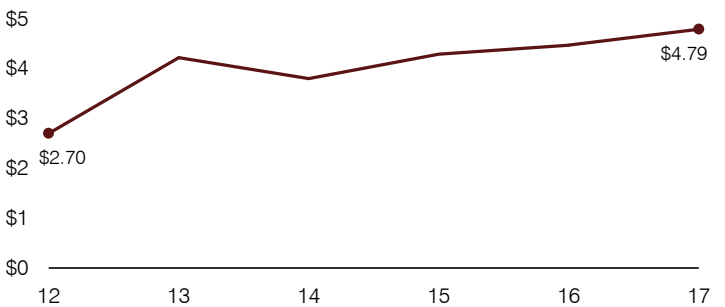
**Plant cost per square foot and square footage per student**



**Students attending**



**Food service cost per meal**



**Financial stress assessment**

Overall financial stress level:

**Low**

Measure: 2015 through 2017

Assessment

Change in number of district students	Steady
Spending exceeded operating/capital budgets	No overspending
Spending increase election results	Voter-approved
Operating reserve percentage, Trend	6.6%, Increasing
Years of capital reserve held	More than 3 years
Current financial and internal control status	Compliant

Low

Moderate

High

**Transportation costs per mile and per rider**

