

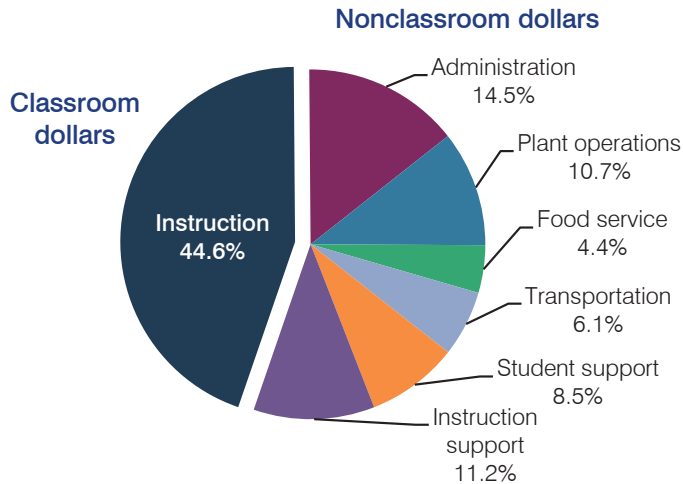
Sacaton Elementary School District

Pinal County
 Efficiency peer groups 10 and T-8, Achievement peer group 21
 Legislative district(s): 8

District size, location: Small, Rural
 Students attending: 420
 Number of schools: 2

OPERATIONAL EFFICIENCY

Spending by operational area



5-year spending trend

Total spending per pupil increased by 24 percent. Spending in the classroom varied year to year, decreasing overall from 47.2 to 44.6 percent. Overall, spending on instruction support increased substantially and spending on student support increased slightly, while spending on plant operations decreased substantially and spending on transportation decreased.

Cost measures relative to peer averages

Operational area	Measure	District	Peer average	State average
Administration	Cost per pupil	\$3,029	\$1,130	\$746
	Students per administrator	32	55	67
Plant operations	Cost per square foot	\$6.28	\$6.14	\$6.03
	Square footage per student	355	157	153
Food service	Cost per meal equivalent	\$3.59	\$2.74	\$2.58
Transportation	Cost per mile	\$4.64	\$2.52	\$3.55
	Cost per rider	\$1,346	\$797	\$1,015

Very low Low Comparable High Very high

Per pupil spending by operational area

	District		Peer average	State average	National average
	2012	2013	2013	2013	2011
Total	\$21,018	\$20,892	\$8,518	\$7,496	\$10,658
Classroom dollars	9,770	9,314	4,624	4,031	6,520
Nonclassroom dollars:	11,248	11,578	3,894	3,465	4,138
Administration	2,809	3,029	1,130	746	1,138
Plant operations	2,706	2,226	976	924	1,015
Food service	800	928	511	396	412
Transportation	1,250	1,269	537	369	452
Student support	1,438	1,783	499	582	593
Instruction support	2,245	2,343	241	448	528

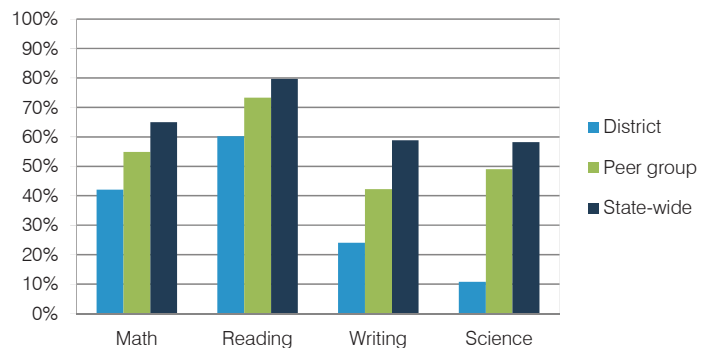
STUDENT ACHIEVEMENT, TEACHER MEASURES, AND FINANCIAL ASSESSMENT

ADE-reported district and school letter grades

District grade: **C**

Grade	Number of schools	Percentage of schools
A	0	0%
B	0	0%
C	1	50%
D	0	0%
F	1	50%
Not rated	0	0%

Students who met state standards (AIMS)



Student and teacher measures

Measure	District	Peer average	State average
Attendance rate	92%	93%	94%
Graduation rate (2012)	N/A	N/A	N/A
Poverty rate (2012)	54%	52%	25%
Students per teacher	10.0	12.4	18.3
Average teacher salary	\$46,966	\$46,086	\$45,264
Amount from Proposition 301	\$2,342	\$2,755	\$3,784
Average years of teacher experience	7.4	11.5	10.9
Percentage of teachers in first 3 years	8%	16%	19%

Financial stress assessment

Overall financial stress level: **Low**

Measure: 2011 through 2013

Assessment

Number of students attending district	Moderate decrease
Spending exceeded operating/capital budgets	2011, isolated
Spending increase election results	No election held
Operating reserve percentage (max. 4%), trend	Impact Aid Fund reserve
Years of capital reserve held	More than 3 years
Current financial and internal control status	Compliant

Stress level

