

# Sacaton Elementary School District

Pinal County

Efficiency peer groups 10 and T-8, Achievement peer group 19<sup>1</sup>

Legislative district(s): 8

District size, location:

Small, Rural

Students attending:

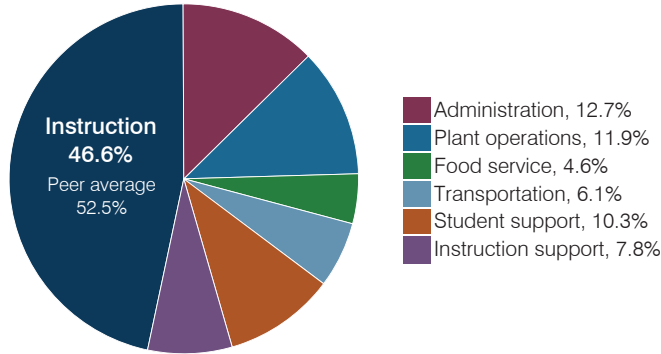
520

Number of schools:

2

## OPERATIONAL EFFICIENCY

### Spending by operational area



### Efficiency measures relative to peer averages

Operational area	Measure	District	Peer average	State average
Administration	Cost per pupil	\$2,729	\$1,231	\$844
	Students per administrative position	32	54	67
Plant operations	Cost per square foot	\$8.91	\$6.81	\$6.30
	Square footage per student	286	153	155
Food service	Cost per meal	\$4.03	\$3.41	\$2.88
Transportation	Cost per mile	\$4.49	\$2.95	\$3.84
	Cost per rider	\$1,808	\$1,037	\$1,198

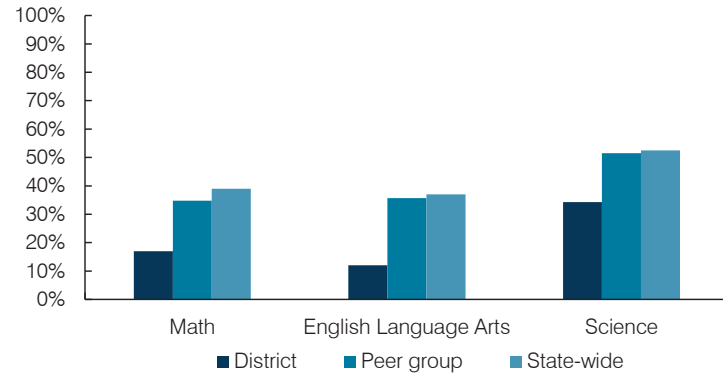
Very low   Low   Comparable   High   Very high

### Per pupil spending

Spending by area	District		Peer average	State average
	2016	2017	2017	2017
Instruction	\$ 8,757	\$ 10,003	\$ 4,993	\$ 4,377
Administration	2,581	2,729	1,231	844
Plant operations	2,016	2,551	1,125	977
Food service	856	975	549	422
Transportation	1,032	1,315	575	381
Student support	1,561	2,201	606	679
Instruction support	2,121	1,672	397	461
<b>Total operational</b>	<b>\$ 18,924</b>	<b>\$ 21,446</b>	<b>\$ 9,476</b>	<b>\$ 8,141</b>
Land and buildings	\$ 537	\$ 746	\$ 194	\$ 691
Equipment	1,265	1,066	329	424
Interest	0	0	167	236
Other	582	599	91	161
<b>Total nonoperational</b>	<b>\$ 2,384</b>	<b>\$ 2,411</b>	<b>\$ 781</b>	<b>\$ 1,512</b>
<b>Total per pupil spending</b>	<b>\$ 21,308</b>	<b>\$ 23,857</b>	<b>\$ 10,257</b>	<b>\$ 9,653</b>

## STUDENT ACHIEVEMENT, STUDENT AND TEACHER MEASURES, AND REVENUES

### Students who passed state assessments



### Student and teacher measures

Measure	District	Peer average	State average
Attendance rate	89%	93%	94%
Graduation rate (2016)	N/A	N/A	N/A
Poverty rate (2016)	37%	34%	22%
Special education population	24%	15%	12%
Students per teacher	11.1	14.8	18.5
Average teacher salary	\$49,813	\$46,717	\$48,372
Amount from Prop 301	\$4,129	\$4,152	\$5,840
Average years of teacher experience	13.1	11.3	11.3
Percentage of teachers in first 3 years	14%	16%	19%

### Per pupil revenues

Revenues by source	District		Peer average	State average
	2016	2017	2017	2017
Federal	\$ 13,231	\$ 12,042	\$ 2,395	\$ 1,318
State	7,148	7,377	4,806	3,831
Local	2,193	2,225	4,236	4,443
<b>Total per pupil revenues</b>	<b>\$ 22,572</b>	<b>\$ 21,644</b>	<b>\$ 11,437</b>	<b>\$ 9,592</b>

#### Select revenues from common sources

	District	Peer average	State average
Equalization formula funding	\$ 7,200	\$ 7,438	\$ 6,815
Amount from Prop 123	298	293	269
Prop 123 additional funding	44	47	50
Grants	7,212	4,651	1,792
Donations and tax credits	960	1,512	341

#### Select revenues from less common sources

	District	Peer average	State average
Desegregation	\$ 0	\$ 0	0 of 12
Small school adjustment	0	0	0 of 12
Federal impact aid	6,020	7,394	3 of 12
Voter-approved levy increases	0	0	6 of 12

<sup>1</sup> See Appendix A for information such as districts included in each peer group and Appendix B for sources and methodology.

**Instructional spending percentage**

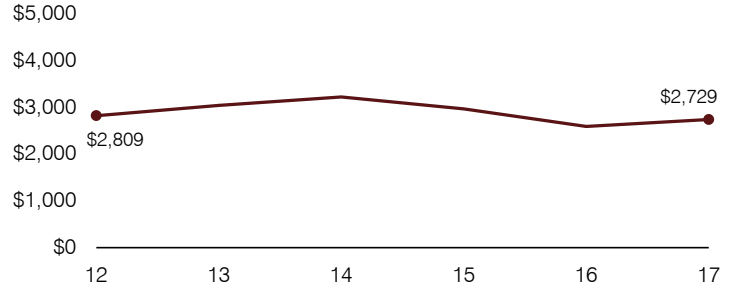
Year:	2001	2002	2003	2004	2005	2006	2007	2008	2009	2010	2011	2012	2013	2014	2015	2016	2017
Percentage:	45.5	43.9	48.5	46.7	53.7	50.4	52.9	47.2	49.9	46.0	49.8	46.5	44.6	43.6	45.4	46.3	46.6

**OPERATIONAL TRENDS AND FINANCIAL STRESS ASSESSMENT**  
Fiscal years as indicated

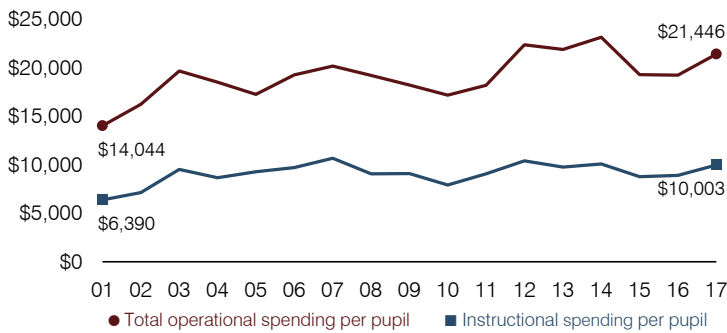
**5-year spending trend (2012 through 2017)**

Total operational spending per pupil, adjusted for inflation, decreased by 4 percent. The percentage of dollars spent on instruction varied year to year, ranging overall from a high of 46.6 to a low of 43.6 percent. Overall, as a percentage of total operational spending, instruction support decreased substantially and plant operations decreased, while student support increased substantially.

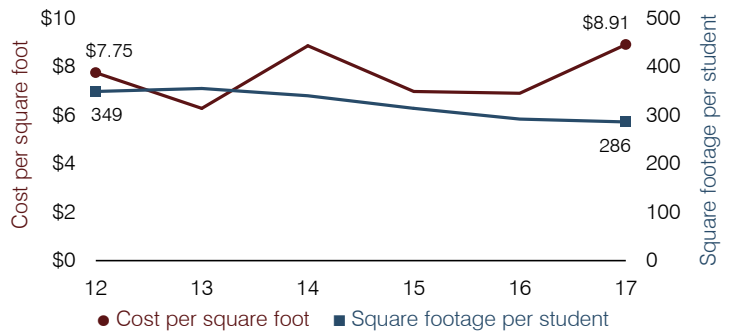
**Administrative cost per pupil**



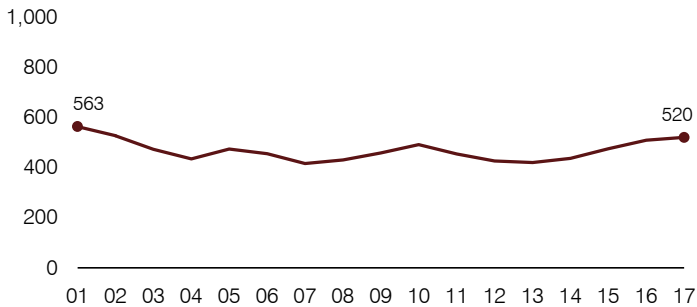
**Total operational and instructional spending per pupil (inflation adjusted to 2017 dollars)**



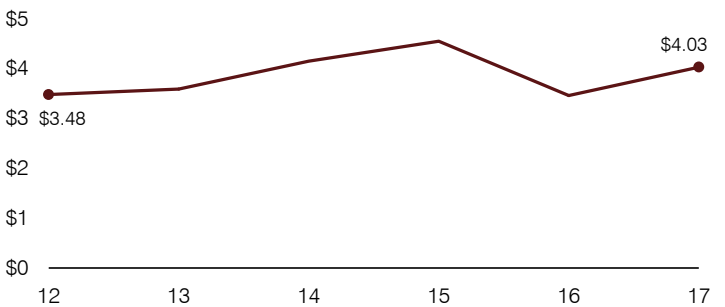
**Plant cost per square foot and square footage per student**



**Students attending**



**Food service cost per meal**



**Financial stress assessment**

Overall financial stress level: **Low**

Measure: 2015 through 2017

	Assessment
Change in number of district students	Increase
Spending exceeded operating/capital budgets	No overspending
Spending increase election results	No election held
Operating reserve percentage, Trend	5.2%, Increasing
Years of capital reserve held	More than 3 years
Current financial and internal control status	Compliant

Low
Moderate
High

**Transportation costs per mile and per rider**

