

Sacaton Elementary School District

Pinal County
Operational peer group: K
Legislative districts: 23

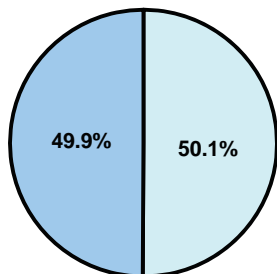
District size: Small
Students attending: 458
Number of schools: 2

OPERATIONAL EFFICIENCY

Average per-pupil spending

District
State

Classroom
\$8,056
\$4,497



Nonclassroom
\$8,099
\$3,411

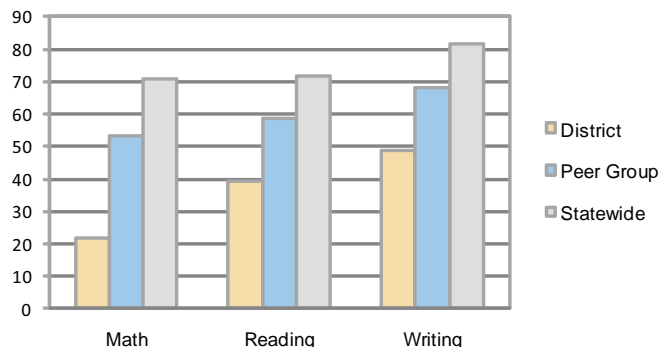
Total
\$16,155
\$7,908

5-year trend

Total spending per pupil increased by 14 percent. Spending in the classroom was very inconsistent year to year and increased significantly overall from 46.7 to 49.9 percent. Spending on food service and instruction support increased, while spending in other nonclassroom areas decreased, especially in student support services.

STUDENT ACHIEVEMENT AND TEACHER INFORMATION

Percentage of students meeting state standards (AIMS)



Adequate Yearly Progress (AYP) toward federal goals

1 school met all applicable AYP objectives for NCLB. 1 did not because some students did not demonstrate sufficient academic progress.

Student and teacher information

| Measure | District | Peer average | State average |
|--------------------------------------|----------|--------------|---------------|
| Attendance rate | 93% | 94% | 95% |
| Graduation rate (2008) | N/A | 73% | 75% |
| Poverty rate | 37% | 30% | 19% |
| Student/teacher ratio | 9.7 | 14.2 | 17.1 |
| Average teacher salary | \$38,376 | \$41,521 | \$45,209 |
| Average years' experience | 9.9 | 10.8 | 8.3 |
| Percent of teachers in first 3 years | 27% | 23% | 16% |

District's cost measures relative to peer group

| Operational Area | Measure | District | Peer Average | State Average |
|------------------|----------------------------|----------|--------------|---------------|
| Administration | Cost per pupil | \$2,175 | \$1,288 | \$729 |
| | Students per administrator | NR | 70 | 66 |
| Plant Operations | Cost per square foot | \$6.20 | \$6.94 | \$6.40 |
| | Square footage per student | NR | 149 | 144 |
| Food Service | Cost per meal equivalent | \$3.40 | \$3.05 | \$2.53 |
| Transportation | Cost per mile | \$3.32 | \$2.22 | \$3.36 |
| | Miles per rider | 289 | 268 | 271 |

Very Low Low Comparable High Very High

Per-pupil spending by function

| | District 2008 | District 2009 | Peer 2009 | State 2009 | National 2007 |
|------------------------------|-----------------|-----------------|----------------|----------------|----------------|
| Total | \$16,782 | \$16,155 | \$9,786 | \$7,908 | \$9,683 |
| Classroom dollars | \$7,918 | \$8,056 | \$5,344 | \$4,497 | \$5,903 |
| Nonclassroom dollars: | \$8,864 | \$8,099 | \$4,442 | \$3,411 | \$3,780 |
| Administration | 2,360 | 2,175 | 1,288 | 729 | 1,050 |
| Plant Operations | 2,228 | 2,015 | 1,162 | 920 | 951 |
| Food Service | 690 | 814 | 582 | 382 | 369 |
| Transportation | 1,206 | 889 | 512 | 343 | 406 |
| Student Support | 1,293 | 1,189 | 586 | 594 | 512 |
| Instruction Support | 1,087 | 1,017 | 311 | 431 | 470 |
| Other | 0 | 0 | 1 | 12 | 22 |

Proposition 301

Teacher pay

On average, each teacher, librarian, and counselor earned between \$1,050 and \$1,700 in additional salary. Performance pay earned in fiscal year 2009 was not paid out until fiscal year 2010.

Performance pay plan goals and results

| Type of goal | Goal met? |
|----------------------------------|-----------|
| Student achievement | ☐ |
| Dropout/ graduation rates | ■ |
| Student attendance | ■ |
| Parent/student satisfaction | ■ |
| Teacher attendance | ■ |
| Teacher professional development | ■ |
| Teacher evaluations | ▴ |
| Tutoring | ■ |
| Other | ▴ |

■ = yes, ☐ = no, and ▴ = partially