

Classroom Dollars and Proposition 301 Results

Sacaton Elementary School District

Pinal County

District size: Small
 Students attending: 430
 Number of schools: 2
 Number of certified teachers: 40

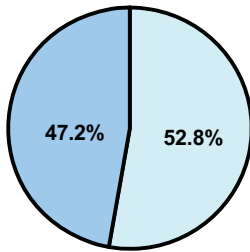
Classroom Dollars

Fiscal year 2008 averages per pupil

District

State

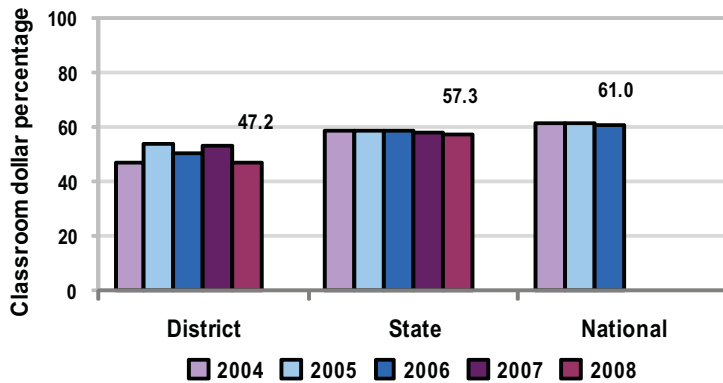
Classroom
 \$7,918
 \$4,480



Nonclassroom
 \$8,864
 \$3,333

Total
 \$16,782
 \$7,813

5-year comparison



Expenditures by function

	District					State 2008	National 2006
	2004	2005	2006	2007	2008		
Classroom dollars	46.7	53.7	50.4	52.9	47.2	57.3	61.0
Nonclassroom dollars:							
Administration	13.7	12.5	16.7	14.7	14.1	9.2	10.8
Plant operations	13.0	10.6	11.6	11.0	13.2	11.3	9.9
Food service	4.1	3.9	3.5	3.8	4.1	4.8	3.8
Transportation	6.1	5.9	5.8	5.9	7.2	4.4	4.2
Student support	14.4	9.9	9.1	7.9	7.7	7.4	5.2
Instruction support	2.0	3.4	2.9	3.8	6.5	5.4	4.9
Other		0.1				0.2	0.2

Comparative Information

	District			State 2008
	2006	2007	2008	
Student/teacher ratio	13.0	10.4	10.7	17.3
Average teacher salary	\$42,152	\$50,690	\$48,287	\$44,967
Average years' experience	9.0	8.1	7.9	8.1

Classroom dollar ranking: 196 of 230 districts.

Proposition 301

District-reported 2008 results

Teacher pay

- On average, each teacher, librarian, and counselor earned between \$3,270 and \$3,670 in additional salary.

Performance

- The District accomplished most of its goals, which were similar to the prior fiscal year's goals and were based on district, school, and individual performance.
- Teachers received acceptable performance evaluations, participated in at least 2 committees, and attended scheduled parent-teacher conferences and parent meetings.
- Each school developed and implemented a program to increase student attendance, which improved by 2 percent.
- The goal not met required an increase in the overall percentage of students who met or exceeded math and/or reading standards.

Menu

- Monies continued to be used for certified substitute teacher salaries and benefits and for perfect attendance incentives.