

Classroom Dollars and Proposition 301 Results

Sacaton Elementary School District

Pinal County

District size: Small
 Students attending: 455
 Number of schools: 2
 Number of certified teachers: 35

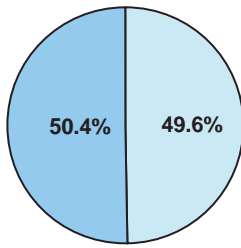
Classroom Dollars

Fiscal year 2006 averages per pupil

District

State

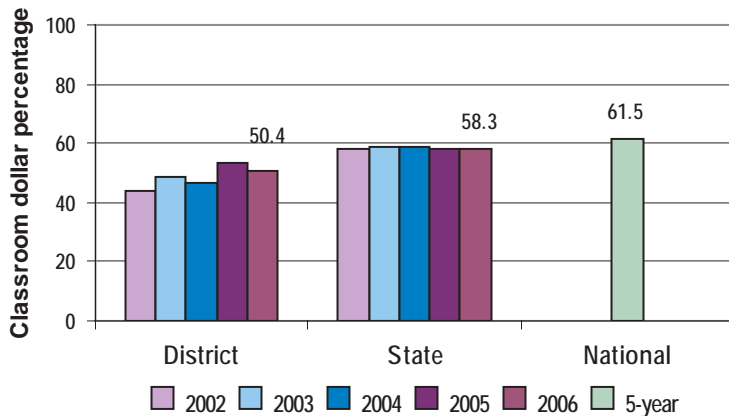
Classroom
\$7,967
\$3,981



Nonclassroom
\$7,851
\$2,852

Total
\$15,818
\$6,833

5-year comparison



Expenditures by function

	District					State 2006	National 5-year
	2002	2003	2004	2005	2006		
Classroom dollars	43.9	48.5	46.7	53.7	50.4	58.3	61.5
Nonclassroom dollars:							
Administration	21.1	13.2	13.7	12.5	16.7	9.4	11.0
Plant operations	12.5	10.6	13.0	10.6	11.6	11.2	9.6
Food service	4.1	3.4	4.1	3.9	3.5	4.7	3.9
Transportation	6.0	4.8	6.1	5.9	5.8	4.2	4.0
Student support	10.3	17.2	14.4	9.9	9.1	7.2	5.1
Instruction support	2.1	2.3	2.0	3.4	2.9	4.8	4.7
Other				0.1		0.2	0.2

Comparative Information

	District			State 2006
	2004	2005	2006	
Student/teacher ratio	12.1	12.5	13.0	17.7
Average teacher salary	\$35,624	\$39,808	\$42,152	\$42,967
Average years' experience	8.7	9.0	9.0	8.3

Classroom dollar ranking: 176 of 229 districts.

Proposition 301

District-reported 2006 results

Teacher pay

- On average, each teacher, librarian, and counselor earned between \$2,426 and \$3,310 in additional salary.

Performance

- The District accomplished its goals, which were the same as the prior fiscal year's goals and were based on district and individual performance.
- Standardized test scores in math increased from the prior school year.
- Student attendance improved by more than 1 percent.
- Eligible staff received quarterly perfect attendance incentives.
- Most eligible employees received acceptable performance evaluations.
- Other goals were linked to teachers acting as grade-level representatives and setting personal performance goals.

Menu

- Monies were used to increase eligible employee compensation.
- Monies were also used for certified substitute teacher salaries and benefits and for perfect attendance incentives.