

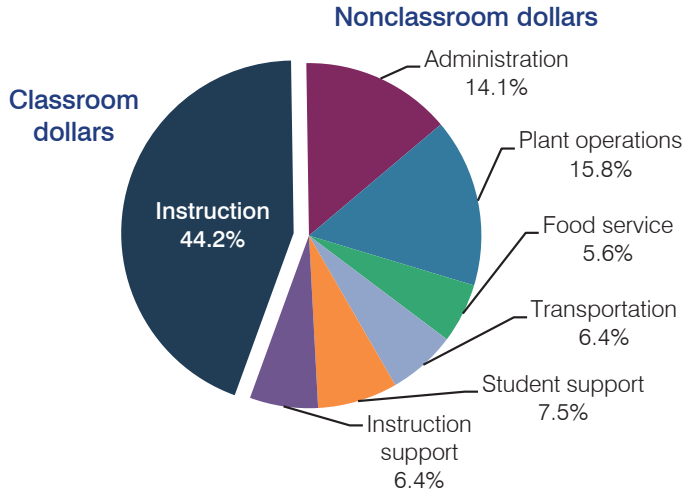
# Saddle Mountain Unified School District

Maricopa County  
 Efficiency peer groups 5 and T-8, Achievement peer group 4  
 Legislative district(s): 13

District size, location: Medium, Rural  
 Students attending: 1,317  
 Number of schools: 3

## OPERATIONAL EFFICIENCY

### Spending by operational area



### 5-year spending trend

Total spending per pupil increased by 18 percent. Spending in the classroom was very inconsistent year to year, decreasing overall from 47.1 to 44.2 percent. Overall, spending on instruction support increased substantially and spending on student support increased, while spending on transportation decreased. Spending on other nonclassroom areas varied year to year.

### Cost measures relative to peer averages

| Operational area | Measure                    | District | Peer average | State average |
|------------------|----------------------------|----------|--------------|---------------|
| Administration   | Cost per pupil             | \$1,155  | \$1,077      | \$746         |
|                  | Students per administrator | 60       | 56           | 67            |
| Plant operations | Cost per square foot       | \$5.22   | \$4.83       | \$6.03        |
|                  | Square footage per student | 248      | 260          | 153           |
| Food service     | Cost per meal equivalent   | \$2.58   | \$3.14       | \$2.58        |
| Transportation   | Cost per mile              | \$2.65   | \$2.52       | \$3.55        |
|                  | Cost per rider             | \$784    | \$797        | \$1,015       |

Very low   Low   Comparable   High   Very high

### Per pupil spending by operational area

|                              | District       |                | Peer average   | State average  | National average |
|------------------------------|----------------|----------------|----------------|----------------|------------------|
|                              | 2012           | 2013           | 2013           | 2013           | 2011             |
| <b>Total</b>                 | <b>\$8,532</b> | <b>\$8,183</b> | <b>\$8,465</b> | <b>\$7,496</b> | <b>\$10,658</b>  |
| <b>Classroom dollars</b>     | <b>3,960</b>   | <b>3,617</b>   | <b>4,259</b>   | <b>4,031</b>   | <b>6,520</b>     |
| <b>Nonclassroom dollars:</b> | <b>4,572</b>   | <b>4,566</b>   | <b>4,206</b>   | <b>3,465</b>   | <b>4,138</b>     |
| Administration               | 1,062          | 1,155          | 1,077          | 746            | 1,138            |
| Plant operations             | 1,183          | 1,295          | 1,237          | 924            | 1,015            |
| Food service                 | 486            | 460            | 419            | 396            | 412              |
| Transportation               | 706            | 523            | 535            | 369            | 452              |
| Student support              | 578            | 614            | 630            | 582            | 593              |
| Instruction support          | 557            | 519            | 308            | 448            | 528              |

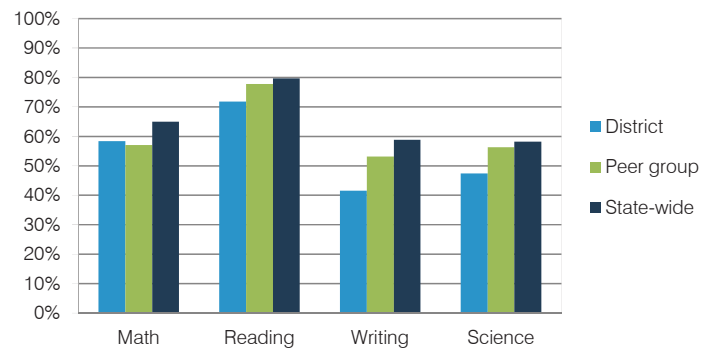
## STUDENT ACHIEVEMENT, TEACHER MEASURES, AND FINANCIAL ASSESSMENT

### ADE-reported district and school letter grades

District grade: **B**

| Grade     | Number of schools | Percentage of schools |
|-----------|-------------------|-----------------------|
| A         | 0                 | 0%                    |
| B         | 2                 | 67%                   |
| C         | 1                 | 33%                   |
| D         | 0                 | 0%                    |
| F         | 0                 | 0%                    |
| Not rated | 0                 | 0%                    |

### Students who met state standards (AIMS)



### Student and teacher measures

| Measure                                 | District | Peer average | State average |
|---|----------|--------------|---------------|
| Attendance rate                         | 96%      | 94%          | 94%           |
| Graduation rate (2012)                  | 88%      | 82%          | 77%           |
| Poverty rate (2012)                     | 16%      | 15%          | 25%           |
| Students per teacher                    | 18.8     | 16.5         | 18.3          |
| Average teacher salary                  | \$42,144 | \$40,197     | \$45,264      |
| Amount from Proposition 301             | \$3,867  | \$4,027      | \$3,784       |
| Average years of teacher experience     | 8.7      | 11.1         | 10.9          |
| Percentage of teachers in first 3 years | 26%      | 15%          | 19%           |

### Financial stress assessment

Overall financial stress level: **Low**

Measure: 2011 through 2013

| Measure                                       | Assessment             |
|---|------------------------|
| Number of students attending district         | Increase               |
| Spending exceeded operating/capital budgets   | No overspending        |
| Spending increase election results            | Mixed election results |
| Operating reserve percentage (max. 4%), trend | 2.4%, Varying          |
| Years of capital reserve held                 | More than 3 years      |
| Current financial and internal control status | Compliant              |

Stress level

