

Classroom Dollars and Proposition 301 Results

Saddle Mountain Unified School District

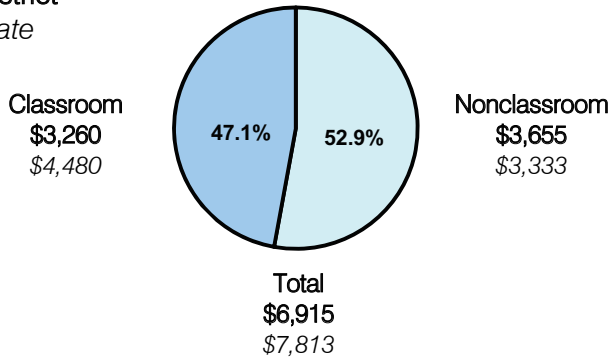
Maricopa County

District size: Medium
 Students attending: 1,419
 Number of schools: 3
 Number of certified teachers: 57

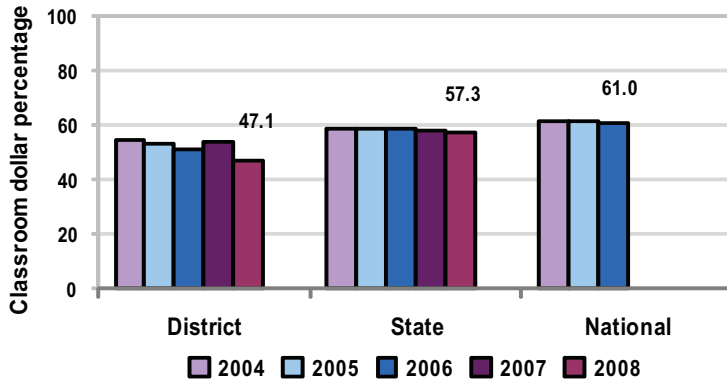
Classroom Dollars

Fiscal year 2008 averages per pupil

District
 State



5-year comparison



Expenditures by function

	District					State 2008	National 2006
	2004	2005	2006	2007	2008		
Classroom dollars	54.4	53.1	51.2	53.6	47.1	57.3	61.0
Nonclassroom dollars:							
Administration	12.0	10.8	10.2	10.0	14.4	9.2	10.8
Plant operations	14.6	12.1	14.9	13.5	16.2	11.3	9.9
Food service	5.5	3.5	4.4	5.1	5.7	4.8	3.8
Transportation	8.7	8.4	7.8	7.5	7.9	4.4	4.2
Student support	0.3	10.3	7.6	7.4	5.8	7.4	5.2
Instruction support	4.5	1.7	3.9	2.9	2.9	5.4	4.9
Other		0.1				0.2	0.2

Comparative Information

	District			State 2008
	2006	2007	2008	
Student/teacher ratio	17.1	14.5	23.0	17.3
Average teacher salary	\$42,531	\$38,876	\$43,462	\$44,967
Average years' experience	7.8	8.4	6.7	8.1

Classroom dollar ranking: 197 of 230 districts.

Proposition 301

District-reported 2008 results

Teacher pay

- On average, each teacher earned \$5,206 in additional salary, and each instructional aide earned an additional \$1,617.

Performance

- The District accomplished its goals, which were based on school performance.
- Students demonstrated improved writing skills.
- The high school had a dropout rate of less than 6 percent.
- Eligible employees attended in-service trainings.

Menu

- Monies were used primarily to increase eligible employee compensation.
- Monies were also used for AIMS intervention and professional development activities.