

Classroom Dollars and Proposition 301 Results

Saddle Mountain Unified School District

Maricopa County

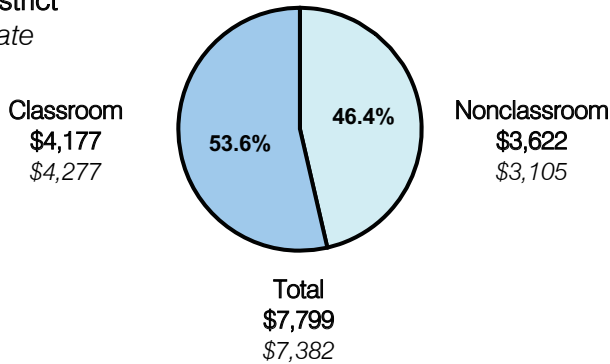
District size: Medium
 Students attending: 1,147
 Number of schools: 2
 Number of certified teachers: 79

Classroom Dollars

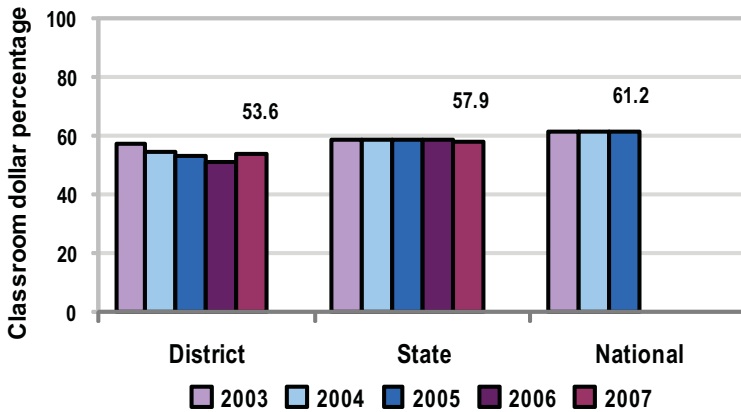
Fiscal year 2007 averages per pupil

District

State



5-year comparison



Expenditures by function

	District					State 2007	National 2005
	2003	2004	2005	2006	2007		
Classroom dollars	57.1	54.4	53.1	51.2	53.6	57.9	61.2
Nonclassroom dollars:							
Administration	9.8	12.0	10.8	10.2	10.0	9.5	11.0
Plant operations	15.4	14.6	12.1	14.9	13.5	11.3	9.6
Food service	5.5	5.5	3.5	4.4	5.1	4.7	3.9
Transportation	8.3	8.7	8.4	7.8	7.5	4.3	4.1
Student support	0.3	0.3	10.3	7.6	7.4	7.3	5.2
Instruction support	3.5	4.5	1.7	3.9	2.9	4.8	4.8
Other	0.1		0.1			0.2	0.2

Comparative Information

	District			State 2007
	2005	2006	2007	
Student/teacher ratio	15.3	17.1	14.5	17.4
Average teacher salary	\$37,631	\$42,531	\$38,876	\$43,833
Average years' experience	8.2	7.8	8.4	8.1

Classroom dollar ranking: 139 of 229 districts.

Proposition 301

District-reported 2007 results

Teacher pay

- On average, each teacher earned \$4,894 in additional salary, each librarian and counselor earned an additional \$6,206, and each instructional aide earned an additional \$1,475.

Performance

- The District accomplished its goals, which were based on school performance.
- 90 percent of high school students and 80 percent of elementary students demonstrated improved writing skills.
- The high school had a dropout rate of less than 6 percent.
- Staff participated in school in-service trainings.

Menu

- Monies were used primarily to increase eligible employee compensation.
- Monies were also used for AIMS intervention and professional development activities.