

Classroom Dollars and Proposition 301 Results

Safford Unified School District

Graham County

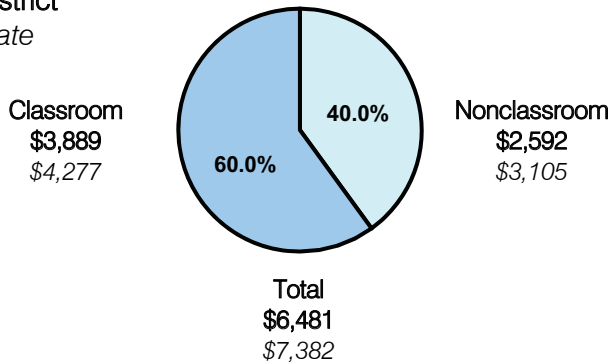
District size: Medium
 Students attending: 2,769
 Number of schools: 6
 Number of certified teachers: 147

Classroom Dollars

Fiscal year 2007 averages per pupil

District

State

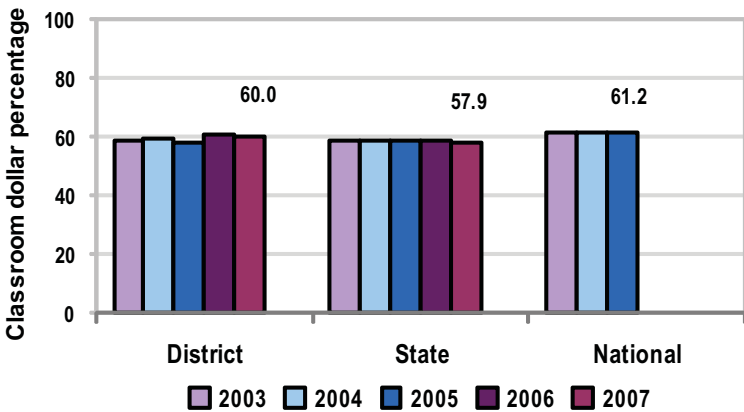


Comparative Information

	District			State
	2005	2006	2007	2007
Student/teacher ratio	18.6	18.1	18.8	17.4
Average teacher salary	\$38,663	\$40,001	\$43,831	\$43,833
Average years' experience	9.6	9.7	9.5	8.1

Classroom dollar ranking: 40 of 229 districts.

5-year comparison



Expenditures by function

	District					State	National
	2003	2004	2005	2006	2007	2007	2005
Classroom dollars	58.7	59.1	58.1	60.4	60.0	57.9	61.2
Nonclassroom dollars:							
Administration	10.7	10.0	11.3	10.9	11.7	9.5	11.0
Plant operations	9.5	9.4	9.6	8.9	8.9	11.3	9.6
Food service	4.6	4.7	4.5	5.0	5.2	4.7	3.9
Transportation	3.0	3.4	3.3	3.2	3.5	4.3	4.1
Student support	6.9	6.4	6.9	5.6	6.0	7.3	5.2
Instruction support	6.6	7.0	6.3	6.0	4.7	4.8	4.8
Other						0.2	0.2

Proposition 301

District-reported 2007 results

Teacher pay

- On average, each teacher and librarian earned \$6,525 in additional salary, and each counselor earned an additional \$5,055.

Performance

- The District accomplished its goals, which were based on individual performance.
- Teachers developed individual goals for student academic achievement. Student achievement was measured by test scores, assessments, and projects.

Menu

- Monies were used to compensate teachers for completing 15 hours of professional development training.