

# Classroom Dollars and Proposition 301 Results

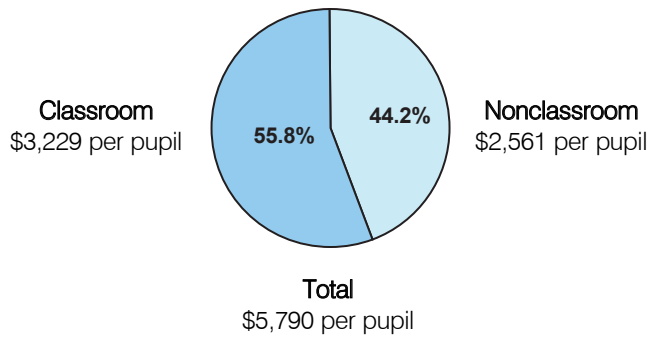
## Sahuarita Unified School District

Pima County

District size: Medium  
 Students attending: 3,029  
 Number of schools: 5  
 Number of certified teachers: 163

### Classroom Dollars

Fiscal year 2005

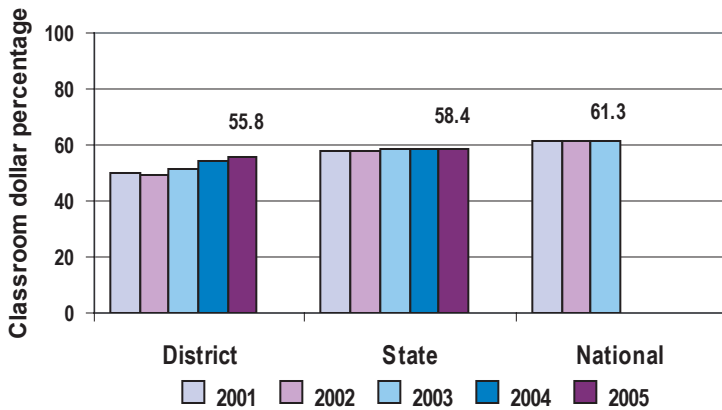


### Comparative Information

	District			State
	2003	2004	2005	2005
Student/teacher ratio	16.5	16.9	18.5	18.3
Average teacher salary	\$35,100	\$36,528	\$38,420	\$39,095
Average years' experience	8.2	8.0	8.0	8.5

Classroom dollar ranking: 109 of 228 districts.

### 5-year comparison



### Expenditures by function

	District					State	National
	2001	2002	2003	2004	2005	2005	2002
Classroom dollars	50.3	49.2	51.4	54.0	55.8	58.4	61.5
Nonclassroom dollars:							
Administration	10.1	10.9	8.9	9.6	9.5	9.5	11.1
Plant operations	18.5	17.4	17.6	14.7	12.1	11.4	9.5
Food service	5.1	5.5	4.6	4.9	6.1	4.8	4.0
Transportation	6.4	6.6	8.7	8.6	7.5	4.1	4.0
Student support	6.7	7.3	6.2	5.6	6.6	7.0	5.0
Instruction support	2.9	3.1	2.6	2.6	2.4	4.6	4.7
Other						0.2	0.2

### Proposition 301

#### District-reported 2005 results

##### Teacher pay

- On average, each teacher earned an additional \$3,985 in salary; each speech pathologist, audiologist, and counselor earned between \$3,477 and \$3,563; and the librarian earned an additional \$6,876.

##### Performance

- The District accomplished its goals, which were similar to the prior fiscal year's goals and were based on district and individual performance.
- Goals were linked to the District's assessment plan to improve student achievement, and also called for teachers to set professional development goals and receive acceptable performance evaluations.
- The District also met its goal to reduce energy usage.

##### Menu

- Monies were used solely to increase eligible employee compensation.