

Classroom Dollars and Proposition 301 Results

Sahuarita Unified School District

Pima County

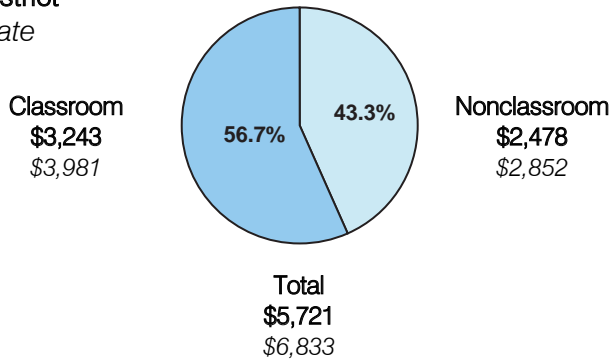
District size: Medium
 Students attending: 3,645
 Number of schools: 5
 Number of certified teachers: 186

Classroom Dollars

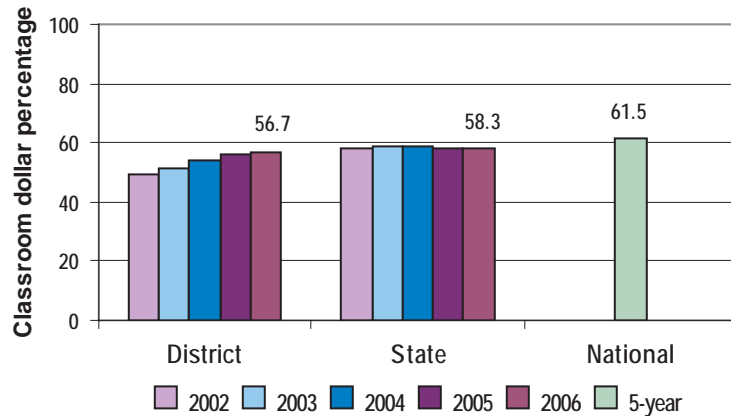
Fiscal year 2006 averages per pupil

District

State



5-year comparison



Expenditures by function

	District					State 2006	National 5-year
	2002	2003	2004	2005	2006		
Classroom dollars	49.2	51.4	54.0	55.8	56.7	58.3	61.5
Nonclassroom dollars:							
Administration	10.9	8.9	9.6	9.5	10.5	9.4	11.0
Plant operations	17.4	17.6	14.7	12.1	12.0	11.2	9.6
Food service	5.5	4.6	4.9	6.1	5.9	4.7	3.9
Transportation	6.6	8.7	8.6	7.5	7.0	4.2	4.0
Student support	7.3	6.2	5.6	6.6	6.3	7.2	5.1
Instruction support	3.1	2.6	2.6	2.4	1.6	4.8	4.7
Other						0.2	0.2

Comparative Information

	District			State 2006
	2004	2005	2006	
Student/teacher ratio	16.9	18.5	19.6	17.7
Average teacher salary	\$36,528	\$38,420	\$36,574	\$42,967
Average years' experience	8.0	8.0	7.8	8.3

Classroom dollar ranking: 91 of 229 districts.

Proposition 301

District-reported 2006 results

Teacher pay

- On average, each teacher, speech pathologist, audiologist, and counselor earned between \$3,082 and \$4,978 in additional salary.

Performance

- The District accomplished its goals, which were similar to the prior fiscal year's goals and were based on district and individual performance.
- Goals were linked to student achievement, and also called for teachers to set professional development goals and receive acceptable performance evaluations.

Menu

- Monies were used solely to increase eligible employee compensation.