

# Sahuarita Unified School District

Pima County  
Operational peer group: D  
Legislative districts: 30

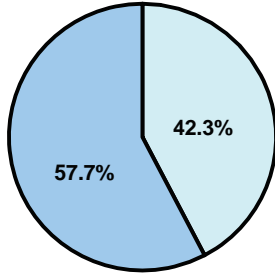
District size: Medium-Large  
Students attending: 4,630  
Number of schools: 6

## OPERATIONAL EFFICIENCY

### Average per-pupil spending

District  
State

**Classroom**  
**\$3,935**  
\$4,497



**Nonclassroom**  
**\$2,887**  
\$3,411

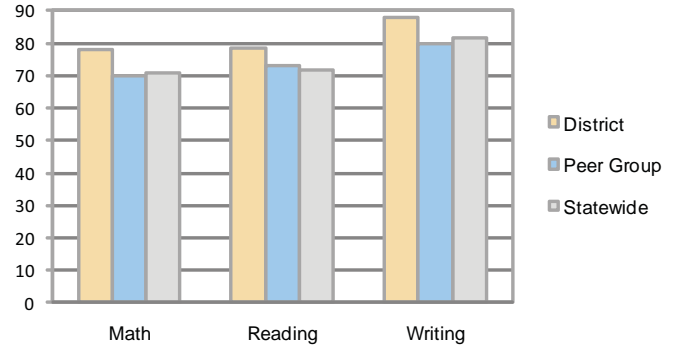
**Total**  
**\$6,822**  
\$7,908

### 5-year trend

Total spending per pupil increased by 13 percent. Spending in the classroom varied year to year and increased significantly overall from 54 to 57.7 percent. Spending on transportation decreased significantly, while spending in other nonclassroom areas varied year to year.

## STUDENT ACHIEVEMENT AND TEACHER INFORMATION

### Percentage of students meeting state standards (AIMS)



### Adequate Yearly Progress (AYP) toward federal goals

6 schools met all applicable AYP objectives for NCLB.

### Student and teacher information

Measure	District	Peer average	State average
Attendance rate	95%	94%	95%
Graduation rate (2008)	85%	73%	75%
Poverty rate	11%	15%	19%
Student/teacher ratio	17.1	17.2	17.1
Average teacher salary	\$39,533	\$42,175	\$45,209
Average years' experience	9.3	8.4	8.3
Percent of teachers in first 3 years	25%	34%	16%

### District's cost measures relative to peer group

Operational Area	Measure	District	Peer Average	State Average
Administration	Cost per pupil	\$627	\$775	\$729
	Students per administrator	58	61	66
Plant Operations	Cost per square foot	\$6.83	\$6.13	\$6.40
	Square footage per student	136	168	144
Food Service	Cost per meal equivalent	\$2.86	\$2.64	\$2.53
Transportation	Cost per mile	\$2.46	\$2.96	\$3.36
	Miles per rider	225	307	271

Very Low   Low   Comparable   High   Very High

### Per-pupil spending by function

	District		Peer	State	National
	2008	2009	2009	2009	2007
<b>Total</b>	<b>\$6,494</b>	<b>\$6,822</b>	<b>\$7,896</b>	<b>\$7,908</b>	<b>\$9,683</b>
<b>Classroom dollars</b>	<b>\$3,551</b>	<b>\$3,935</b>	<b>\$4,312</b>	<b>\$4,497</b>	<b>\$5,903</b>
<b>Nonclassroom dollars:</b>	<b>\$2,943</b>	<b>\$2,887</b>	<b>\$3,584</b>	<b>\$3,411</b>	<b>\$3,780</b>
Administration	648	627	775	729	1,050
Plant Operations	948	926	1,032	920	951
Food Service	419	404	365	382	369
Transportation	317	307	397	343	406
Student Support	450	457	629	594	512
Instruction Support	161	166	380	431	470
Other	0	0	6	12	22

### Proposition 301

#### Teacher pay

On average, each teacher, librarian, speech pathologist, and counselor earned between \$4,752 and \$9,069 in additional salary.

#### Performance pay plan goals and results

Type of goal	Goal met?
Student achievement	■
Dropout/ graduation rates	■
Student attendance	■
Parent/student satisfaction	■
Teacher attendance	■
Teacher professional development	■
Teacher evaluations	■
Tutoring	■
Other	■

■ = yes, □ = no, and ▮ = partially