

Classroom Dollars and Proposition 301 Results

Salome Consolidated Elementary School District

La Paz County

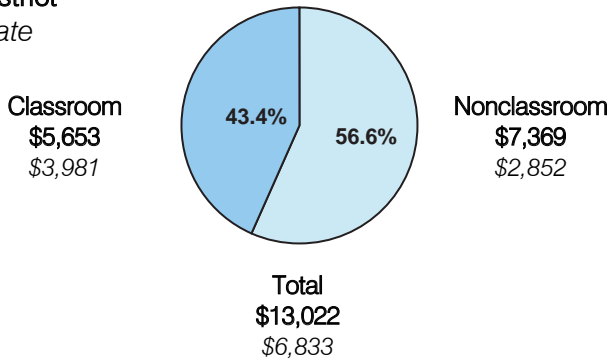
District size: Very Small
 Students attending: 105
 Number of schools: 1
 Number of certified teachers: 11

Classroom Dollars

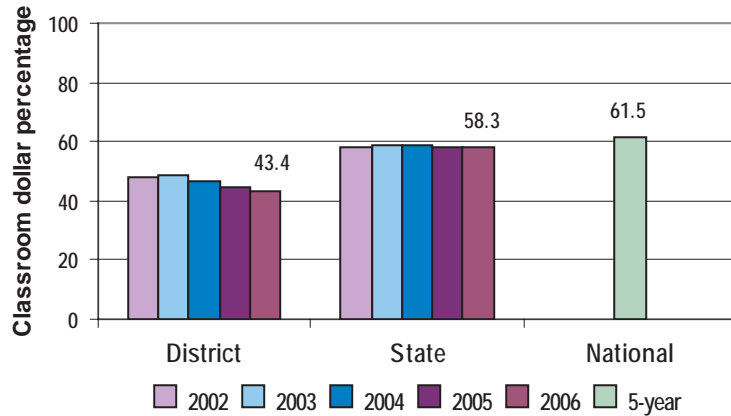
Fiscal year 2006 averages per pupil

District

State



5-year comparison



Expenditures by function

	District					State 2006	National 5-year
	2002	2003	2004	2005	2006		
Classroom dollars	48.3	48.4	46.9	44.5	43.4	58.3	61.5
Nonclassroom dollars:							
Administration	16.4	17.5	14.3	13.8	17.2	9.4	11.0
Plant operations	15.3	14.1	18.9	17.5	16.8	11.2	9.6
Food service	12.4	13.3	8.8	9.1	9.1	4.7	3.9
Transportation	3.0	4.6	3.6	4.2	4.1	4.2	4.0
Student support	4.2	2.1	7.3	8.8	9.4	7.2	5.1
Instruction support	0.4		0.1			4.8	4.7
Other			0.1	2.1		0.2	0.2

Comparative Information

	District			State
	2004	2005	2006	2006
Student/teacher ratio	10.9	9.0	9.5	17.7
Average teacher salary	\$33,478	\$33,097	\$34,662	\$42,967
Average years' experience	4.1	4.1	4.7	8.3

Classroom dollar ranking: 209 of 229 districts.

Proposition 301

District-reported 2006 results

Teacher pay

- On average, each teacher earned an additional \$3,935 in salary.

Performance

- The District accomplished its goals, which were similar to the prior fiscal year's goals and were based on district and individual performance.
- 7 teachers tutored 22 students to help improve student achievement. The District reported notable improvement in the students' basic understanding of the concepts on which they were tutored.
- Teachers participated in professional development activities to improve their classroom skills.
- 4 experienced teachers acted as mentors to new teachers.
- 60 home visits were completed by 4 teachers and 1 teacher held a fall and spring art show to increase parents' and the community's involvement with school activities.

Menu

- Monies were used solely to increase teacher compensation.