

Salome Consolidated Elementary School District

La Paz County

Efficiency peer groups 11 and T-11, Achievement peer group 21

Legislative district(s): 5

District size, location:

Very small, Rural

Students attending:

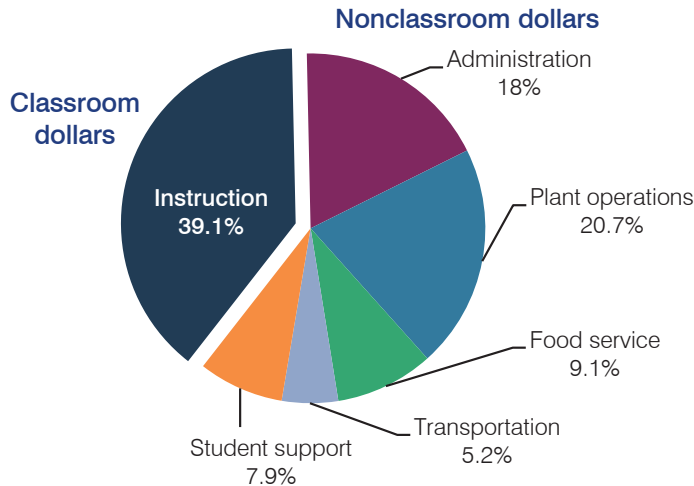
96

Number of schools:

1

OPERATIONAL EFFICIENCY

Spending by operational area



5-year spending trend

Total spending per pupil decreased by 15 percent. Spending in the classroom varied year to year, ranging from a high of 49.5 percent to a low of 34.5 percent. Spending on most nonclassroom areas also varied year to year, as is common for very small districts. Overall, spending on plant operations increased and spending on administration decreased.

Cost measures relative to peer averages

Operational area	Measure	District	Peer average	State average
Administration	Cost per pupil	\$2,069	\$2,572	\$746
	Students per administrator	39	30	67
Plant operations	Cost per square foot	\$7.99	\$6.59	\$6.03
	Square footage per student	299	343	153
Food service	Cost per meal equivalent	\$3.79	\$4.93	\$2.58
Transportation	Cost per mile	\$1.88	\$1.64	\$3.55
	Cost per rider	\$836	\$1,184	\$1,015

Per pupil spending by operational area

	District		Peer average 2013	State average 2013	National average 2011
	2012	2013			
Total	\$13,165	\$11,518	\$15,203	\$7,496	\$10,658
Classroom dollars	4,538	4,499	7,647	4,031	6,520
Nonclassroom dollars:	8,627	7,019	7,556	3,465	4,138
Administration	2,700	2,069	2,572	746	1,138
Plant operations	2,667	2,386	2,148	924	1,015
Food service	1,265	1,050	851	396	412
Transportation	567	601	1,056	369	452
Student support	1,326	913	548	582	593
Instruction support	102	0	381	448	528

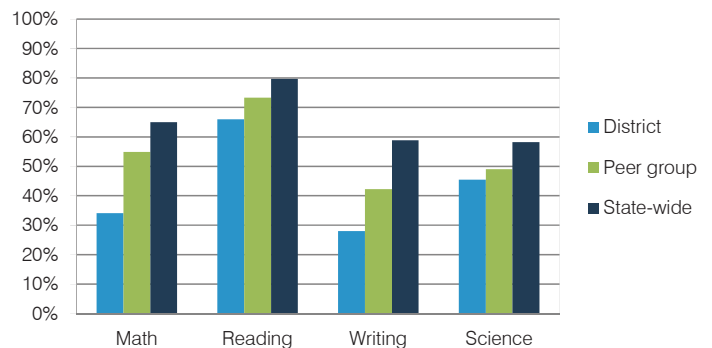
STUDENT ACHIEVEMENT, TEACHER MEASURES, AND FINANCIAL ASSESSMENT

ADE-reported district and school letter grades

District grade: **D**

Grade	Number of schools	Percentage of schools
A	0	0%
B	0	0%
C	0	0%
D	1	100%
F	0	0%
Not rated	0	0%

Students who met state standards (AIMS)



Student and teacher measures

Measure	District	Peer average	State average
Attendance rate	93%	93%	94%
Graduation rate (2012)	N/A	N/A	N/A
Poverty rate (2012)	52%	52%	25%
Students per teacher	17.3	12.4	18.3
Average teacher salary	\$39,986	\$46,086	\$45,264
Amount from Proposition 301	\$2,325	\$2,755	\$3,784
Average years of teacher experience	12.0	11.5	10.9
Percentage of teachers in first 3 years	0%	16%	19%

Financial stress assessment

Overall financial stress level: **Low**

Measure: 2011 through 2013

Assessment

Number of students attending district	Small school adjustment
Spending exceeded operating/capital budgets	No overspending
Spending increase election results	No election held
Operating reserve percentage (max. 4%), trend	4.0%, Steady
Years of capital reserve held	1 to 3 years
Current financial and internal control status	Compliant

Stress level

