

Classroom Dollars and Proposition 301 Results

Salome Consolidated Elementary School District

LaPaz County

District size: Very Small
 Students attending: 100
 Number of schools: 1
 Number of certified teachers: 8

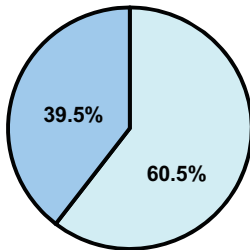
Classroom Dollars

Fiscal year 2008 averages per pupil

District

State

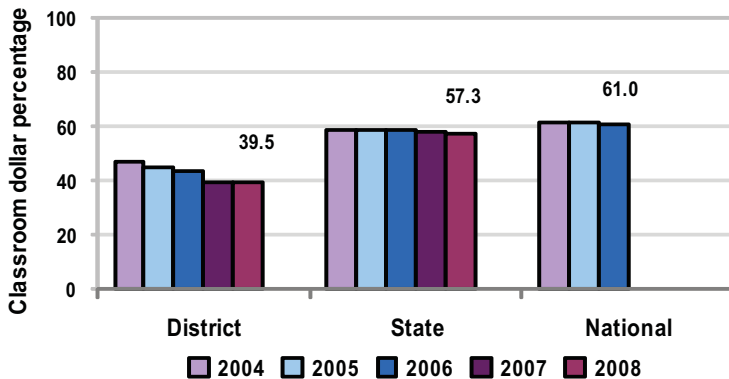
Classroom
\$5,366
\$4,480



Nonclassroom
\$8,206
\$3,333

Total
\$13,572
\$7,813

5-year comparison



Expenditures by function

	Percentage						
	District					State	National
	2004	2005	2006	2007	2008	2008	2006
Classroom dollars	46.9	44.5	43.4	39.3	39.5	57.3	61.0
Nonclassroom dollars:							
Administration	14.3	13.8	17.2	17.6	19.6	9.2	10.8
Plant operations	18.9	17.5	16.8	18.6	19.7	11.3	9.9
Food service	8.8	9.1	9.1	9.4	9.5	4.8	3.8
Transportation	3.6	4.2	4.1	4.6	4.5	4.4	4.2
Student support	7.3	8.8	9.4	10.5	7.2	7.4	5.2
Instruction support	0.1					5.4	4.9
Other	0.1	2.1				0.2	0.2

Comparative Information

	District			State
	2006	2007	2008	2008
Student/teacher ratio	9.5	12.7	13.3	17.3
Average teacher salary	\$34,662	\$39,775	\$44,239	\$44,967
Average years' experience	4.7	6.3	6.5	8.1

Classroom dollar ranking: 213 of 230 districts.

Proposition 301

District-reported 2008 results

Teacher pay

- On average, each teacher earned an additional \$6,630 in salary.

Performance

- The District accomplished its goals, which were similar to the prior fiscal year's goals and were based on individual performance.
- 3 teachers provided before- and after-school tutoring to 34 students to help improve student achievement. The District reported notable improvement in the students' performance.
- 1 experienced teacher acted as a mentor to a new teacher.
- Another goal was linked to professional development.

Menu

- Monies were used solely to increase teacher compensation.