

Classroom Dollars and Proposition 301 Results

Salome Consolidated Elementary School District

LaPaz County

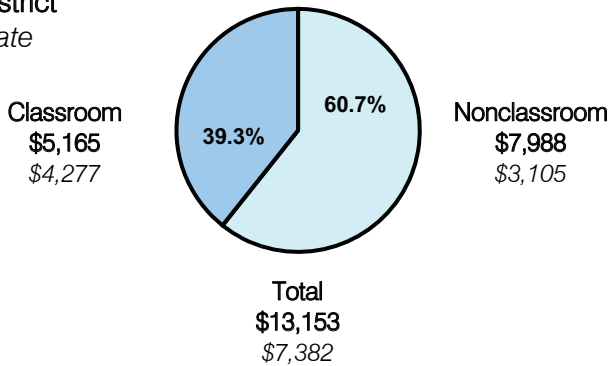
District size: Very Small
 Students attending: 101
 Number of schools: 1
 Number of certified teachers: 8

Classroom Dollars

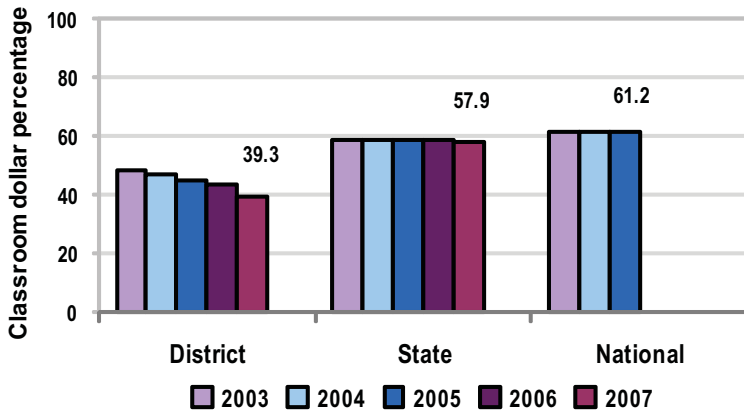
Fiscal year 2007 averages per pupil

District

State



5-year comparison



Expenditures by function

	District					State 2007	National 2005
	2003	2004	2005	2006	2007		
Classroom dollars	48.4	46.9	44.5	43.4	39.3	57.9	61.2
Nonclassroom dollars:							
Administration	17.5	14.3	13.8	17.2	17.6	9.5	11.0
Plant operations	14.1	18.9	17.5	16.8	18.6	11.3	9.6
Food service	13.3	8.8	9.1	9.1	9.4	4.7	3.9
Transportation	4.6	3.6	4.2	4.1	4.6	4.3	4.1
Student support	2.1	7.3	8.8	9.4	10.5	7.3	5.2
Instruction support		0.1				4.8	4.8
Other		0.1	2.1			0.2	0.2

Comparative Information

	District			State
	2005	2006	2007	2007
Student/teacher ratio	9.0	9.5	12.7	17.4
Average teacher salary	\$33,097	\$34,662	\$36,947	\$43,833
Average years' experience	4.1	4.7	6.3	8.1

Classroom dollar ranking: 217 of 229 districts.

Proposition 301

District-reported 2007 results

Teacher pay

- On average, each teacher earned an additional \$3,777 in salary.

Performance

- The District accomplished its goals, which were similar to the prior fiscal year's goals and were based on district and individual performance.
- 4 teachers tutored 16 students to help improve student achievement. The District reported notable improvement in the students' basic understanding of the concepts on which they were tutored.
- 1 experienced teacher acted as a mentor to new teachers.

Menu

- Monies were used solely to increase teacher compensation.