

Classroom Dollars and Proposition 301 Results

San Fernando Elementary School District

Pima County

District size: Very Small
 Students attending: 20
 Number of schools: 1
 Number of certified teachers: 1

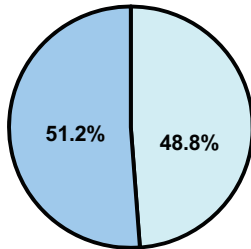
Classroom Dollars

Fiscal year 2008 averages per pupil

District

State

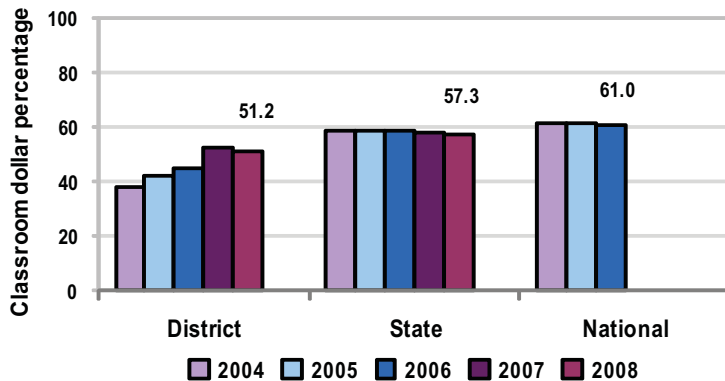
Classroom
\$5,830
\$4,480



Nonclassroom
\$5,557
\$3,333

Total
\$11,387
\$7,813

5-year comparison



Expenditures by function

	District					State 2008	National 2006
	2004	2005	2006	2007	2008		
Classroom dollars	38.2	41.8	45.0	52.1	51.2	57.3	61.0
Nonclassroom dollars:							
Administration	13.1	13.9	17.0	19.5	16.4	9.2	10.8
Plant operations	15.1	14.2	9.7	15.2	21.6	11.3	9.9
Food service						4.8	3.8
Transportation	23.3	22.9	25.7	11.2	10.2	4.4	4.2
Student support	5.2	4.1	1.2	0.5	0.3	7.4	5.2
Instruction support	5.1	3.1	1.4	1.5	0.3	5.4	4.9
Other						0.2	0.2

Comparative Information

	District			State 2008
	2006	2007	2008	
Student/teacher ratio	7.5	17.0	20.0	17.3
Average teacher salary	\$34,149	n/a	n/a	\$44,967
Average years' experience	5.0	6.0	7.0	8.1

Classroom dollar ranking: 168 of 230 districts.

Proposition 301

District-reported 2008 results

Teacher pay

- On average, each teacher earned an additional \$4,312 in salary.

Performance

- The District accomplished its goals, which were based on district and individual performance.
- Teachers integrated technology into core curriculum and aligned the technology plan with technology curriculum.
- Student attendance improved.
- Teachers participated in professional development activities, completed 1 master's-level course, and provided before- and after-school tutoring.

Menu

- Monies were used solely to increase teacher compensation.