

# Classroom Dollars and Proposition 301 Results

## San Fernando Elementary School District

Pima County

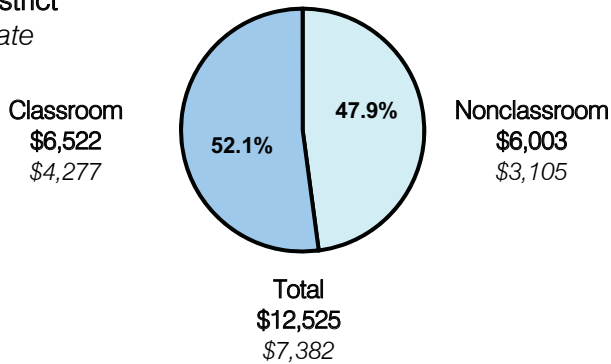
District size: Very Small  
 Students attending: 17  
 Number of schools: 1  
 Number of certified teachers: 1

### Classroom Dollars

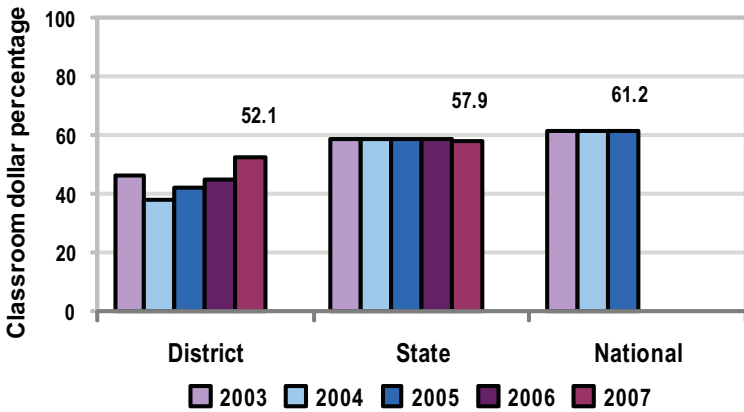
Fiscal year 2007 averages per pupil

District

State



5-year comparison



Expenditures by function

	District					State 2007	National 2005
	2003	2004	2005	2006	2007		
Classroom dollars	46.4	38.2	41.8	45.0	52.1	57.9	61.2
Nonclassroom dollars:							
Administration	12.1	13.1	13.9	17.0	19.5	9.5	11.0
Plant operations	10.9	15.1	14.2	9.7	15.2	11.3	9.6
Food service						4.7	3.9
Transportation	20.5	23.3	22.9	25.7	11.2	4.3	4.1
Student support	5.6	5.2	4.1	1.2	0.5	7.3	5.2
Instruction support	4.5	5.1	3.1	1.4	1.5	4.8	4.8
Other						0.2	0.2

### Comparative Information

	District			State 2007
	2005	2006	2007	
Student/teacher ratio	9.2	7.5	17.0	17.4
Average teacher salary	\$34,656	\$34,149	n/a	\$43,833
Average years' experience	4.0	5.0	6.0	8.1

Classroom dollar ranking: 160 of 229 districts.

### Proposition 301

#### District-reported 2007 results

##### Teacher pay

- On average, each teacher earned an additional \$5,739 in salary.

##### Performance

- The District accomplished its goals, which were based on district and individual performance.
- Kindergarten through 8th-grade social studies curricula were aligned to state standards.
- Student attendance improved over last year.
- Teachers participated in professional development activities and completed one course in a master's program.
- Teachers participated in leadership activities, such as involving middle school students in a community project and providing after-school tutoring.

##### Menu

- Monies were used solely to increase teacher compensation.