

San Simon Unified School District

Cochise County
Operational peer group: G
Legislative districts: 25

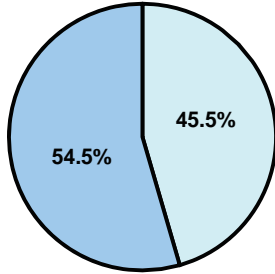
District size: Very Small
Students attending: 94
Number of schools: 1

OPERATIONAL EFFICIENCY

Average per-pupil spending

District
State

Classroom
\$11,019
\$4,497



Nonclassroom
\$9,215
\$3,411

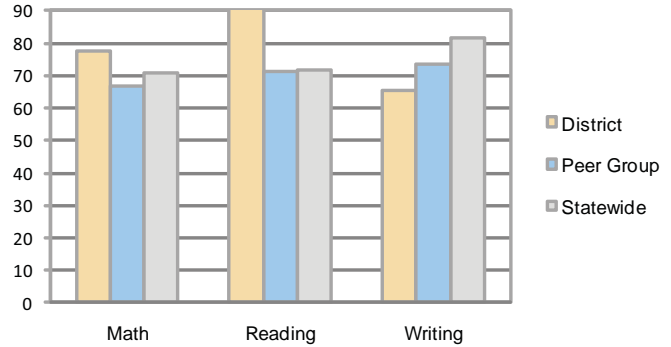
Total
\$20,234
\$7,908

5-year trend

Total spending per pupil increased by 44 percent. Spending in the classroom was very inconsistent year to year and increased significantly from 51.4 to 54.5 percent. Spending on administration and food service decreased overall, but spending in all nonclassroom areas varied year to year.

STUDENT ACHIEVEMENT AND TEACHER INFORMATION

Percentage of students meeting state standards (AIMS)



Adequate Yearly Progress (AYP) toward federal goals

The District's school met all applicable AYP objectives for NCLB.

Student and teacher information

Measure	District	Peer average	State average
Attendance rate	95%	94%	95%
Graduation rate (2008)	87%	54%	75%
Poverty rate	20%	31%	19%
Student/teacher ratio	6.2	10.8	17.1
Average teacher salary	\$42,905	\$45,165	\$45,209
Average years' experience	12.3	12.7	8.3
Percent of teachers in first 3 years	28%	15%	16%

District's cost measures relative to peer group

Operational Area	Measure	District	Peer Average	State Average
Administration	Cost per pupil	\$3,743	\$2,646	\$729
	Students per administrator	21	26	66
Plant Operations	Cost per square foot	\$5.76	\$4.99	\$6.40
	Square footage per student	482	535	144
Food Service	Cost per meal equivalent	\$4.30	\$4.15	\$2.53
Transportation	Cost per mile	\$1.66	\$1.93	\$3.36
	Miles per rider	711	772	271

Very Low Low Comparable High Very High

Per-pupil spending by function

	District		Peer	State	National
	2008	2009	2009	2009	2007
Total	\$15,978	\$20,234	\$15,223	\$7,908	\$9,683
Classroom dollars	\$8,674	\$11,019	\$7,195	\$4,497	\$5,903
Nonclassroom dollars:	\$7,304	\$9,215	\$8,028	\$3,411	\$3,780
Administration	3,079	3,743	2,646	729	1,050
Plant Operations	2,460	2,773	2,496	920	951
Food Service	626	942	800	382	369
Transportation	674	871	1,036	343	406
Student Support	309	560	529	594	512
Instruction Support	156	326	520	431	470
Other	0	0	1	12	22

Proposition 301

Teacher pay

On average, each teacher earned \$4,097 in additional salary.

Performance pay plan goals and results

Type of goal	Goal met?
Student achievement	▲
Dropout/ graduation rates	
Student attendance	
Parent/student satisfaction	
Teacher attendance	
Teacher professional development	■
Teacher evaluations	
Tutoring	
Other	■

■ = yes, □ = no, and ▲ = partially