

# San Simon Unified School District

Cochise County

Efficiency peer groups 11 and T-11, Achievement peer group 5

Legislative district(s): 14

District size, location:

Very small, Rural

Students attending:

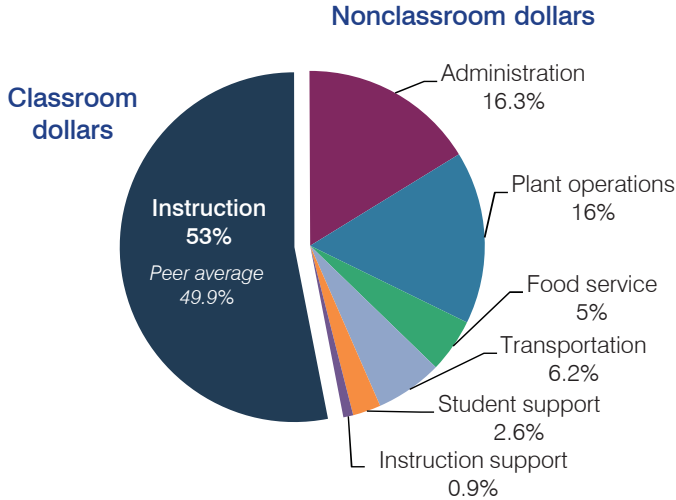
132

Number of schools:

1

## OPERATIONAL EFFICIENCY

### Spending by operational area



### Efficiency measures relative to peer averages

Operational area	Measure	District	Peer average	State average
Administration	Cost per pupil	\$2,425	\$3,013	\$780
	Students per administrative position	33	29	67
Plant operations	Cost per square foot	\$6.98	\$6.80	\$6.09
	Square footage per student	341	370	153
Food service	Cost per meal equivalent	\$5.28	\$5.66	\$2.79
Transportation	Cost per mile	\$0.92	\$1.55	\$3.66
	Cost per rider	\$1,199	\$1,620	\$1,071

### Per pupil spending

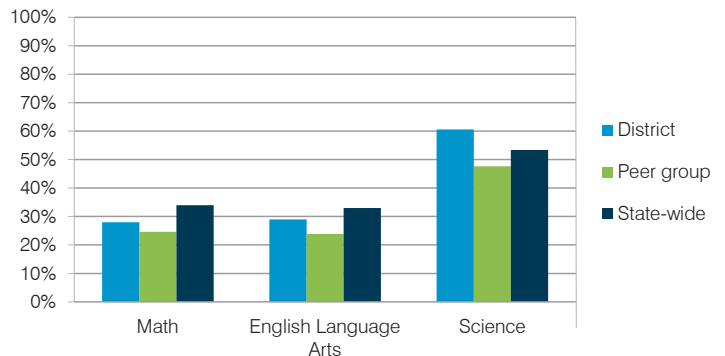
Spending by area	District		Peer average	State average
	2014	2015	2015	2015
Instruction	\$ 8,328	\$ 7,905	\$ 8,258	\$ 4,105
Administration	2,570	2,425	3,013	780
Plant operations	2,203	2,384	2,390	930
Food service	671	744	967	417
Transportation	1,043	927	1,127	371
Student support	149	390	664	613
Instruction support	9	138	572	442
<b>Total operational</b>	<b>\$ 14,973</b>	<b>\$ 14,913</b>	<b>\$ 16,991</b>	<b>\$ 7,658</b>
Land and buildings	\$ 72	\$ 52	\$ 961	\$ 641
Equipment	211	281	582	383
Interest	0	5	40	225
Other	1	0	90	150
<b>Total nonoperational</b>	<b>\$ 284</b>	<b>\$ 338</b>	<b>\$ 1,673</b>	<b>\$ 1,399</b>
<b>Total per pupil spending</b>	<b>\$ 15,257</b>	<b>\$ 15,251</b>	<b>\$ 18,664</b>	<b>\$ 9,057</b>

## STUDENT AND TEACHER MEASURES, FINANCIAL ASSESSMENT, AND REVENUE

### Student and teacher measures

Measure	District	Peer average	State average
Attendance rate	96%	94%	94%
Graduation rate (2014)	N/A	81%	76%
Poverty rate (2014)	22%	24%	23%
Students per teacher	10.2	16.7	18.6
Average teacher salary	\$50,086	\$43,855	\$46,008
Average years of teacher experience	16.0	12.3	11.0
Percentage of teachers in first 3 years	14%	18%	20%

### Students who met state standards



### Financial stress assessment

Overall financial stress level: **Moderate**

Measure: 2013 through 2015	Assessment
Change in number of district students	Small school adjustment
Spending exceeded operating/capital budgets	No overspending
Spending increase election results	No election held
Operating reserve percentage (max. 4%), trend	Frozen taxes, unfunded
Years of capital reserve held	More than 3 years
Current financial and internal control status	Marginally compliant

Low Moderate High

### Per pupil revenues

Revenues by source	District		Peer average	State average
	2014	2015	2015	2015
Federal	\$ 667	\$ 538	\$ 2,858	\$ 1,299
State	3,396	3,696	4,521	3,517
Local	10,434	11,171	13,591	4,248
<b>Total revenues per pupil</b>	<b>\$14,497</b>	<b>\$15,405</b>	<b>\$20,970</b>	<b>\$ 9,064</b>
<b>Select revenues from common sources</b>				
Equalization formula funding	\$ 7,105	\$ 8,045	\$ 9,139	\$ 5,303
Grants	899	697	3,089	1,167
Donations and tax credits	59	108	159	78
<b>Select revenues from less common sources</b>				
Desegregation	\$ 0	\$ 0	0 of 53	
Small school adjustment	7,795	8,515	41 of 53	
Federal impact aid	0	0	3 of 53	
Voter-approved levy increases	0	0	7 of 53	

# San Simon USD—page 2

## Classroom dollar percentage

Year:	2001	2002	2003	2004	2005	2006	2007	2008	2009	2010	2011	2012	2013	2014	2015
Percentage:	52.2	56.8	50.3	51.4	55.0	59.3	58.3	54.3	54.5	56.5	53.1	52.2	53.6	55.6	53.0

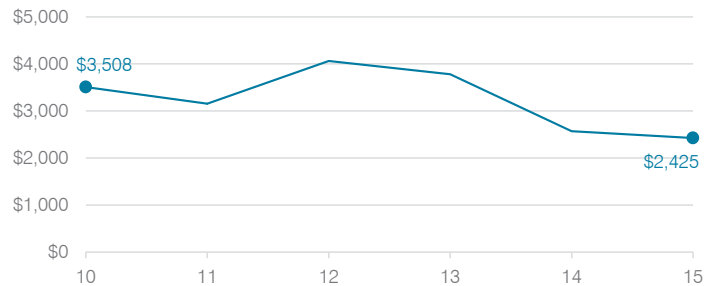
## OPERATIONAL TRENDS

Fiscal years as indicated

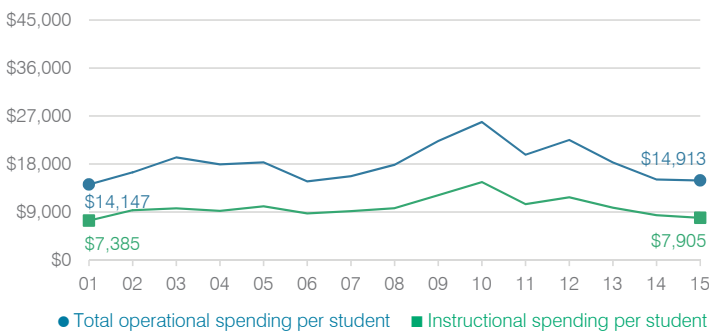
### 5-year spending trend (2010 through 2015)

Student enrollment increased by 57 percent, which contributed to the 42 percent decrease in total operational spending per pupil, adjusted for inflation. The percentage of dollars spent in the classroom varied year to year, decreasing overall from 56.5 to 53 percent. As a percentage of total operational spending, most nonclassroom areas varied year to year, as is common for very small districts.

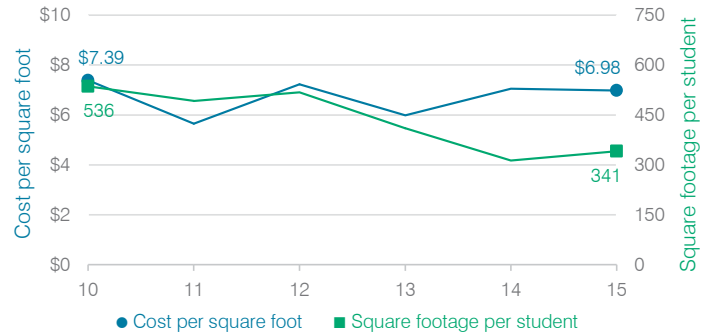
### Administrative cost per student



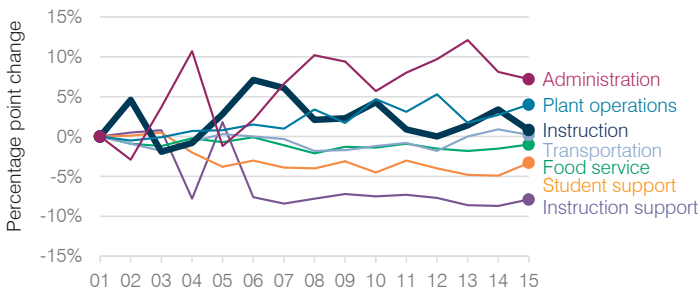
### Total operational and instructional spending per student (inflation adjusted to 2015 dollars)



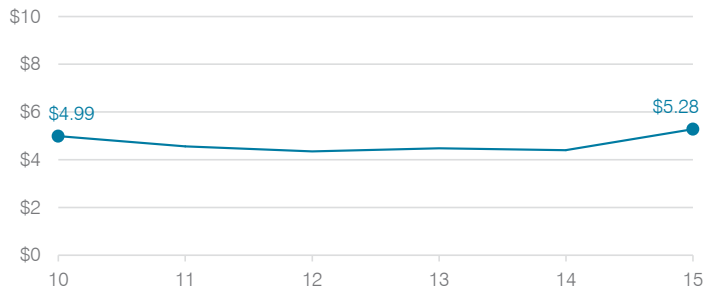
### Plant cost per square foot and square footage per student



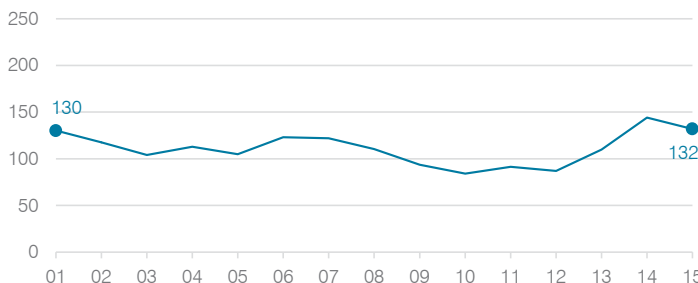
### Changes in operational spending percentages



### Food service cost per meal



### Students attending



### Transportation costs per mile and per rider

