

# Sanders Unified School District

Apache County  
Peer groups: Efficiency Group 5, Achievement Group 8  
Legislative district(s): 2 and 5

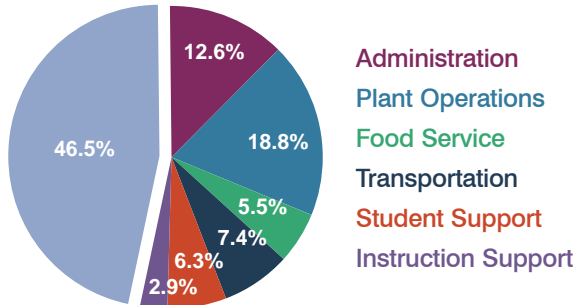
District size: Medium  
Students attending: 934  
Number of schools: 3

## OPERATIONAL EFFICIENCY

### Spending by operational area

Classroom dollars

Nonclassroom dollars

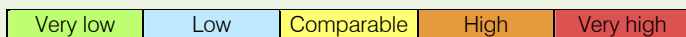


### 5-year trend

Total spending per pupil increased by 29 percent. Spending in the classroom varied year to year, decreasing overall from 47.8 to 46.5 percent. Spending on administration and plant operations increased significantly, and spending on instruction support decreased significantly. Spending on other nonclassroom areas varied year to year.

### District's cost measures relative to peer group

Operational Area	Measure	District	Peer Average	State Average
Administration	Cost per pupil	\$1,576	\$1,104	\$728
	Students per administrator	39	56	66
Plant Operations	Cost per square foot	\$6.40	\$4.74	\$6.10
	Square footage per student	368	259	152
Food Service	Cost per meal equivalent	\$3.21	\$2.98	\$2.45
Transportation	Cost per mile	\$1.78	\$2.71	\$3.39
	Miles per rider	496	336	283



### Per-pupil spending by operational area

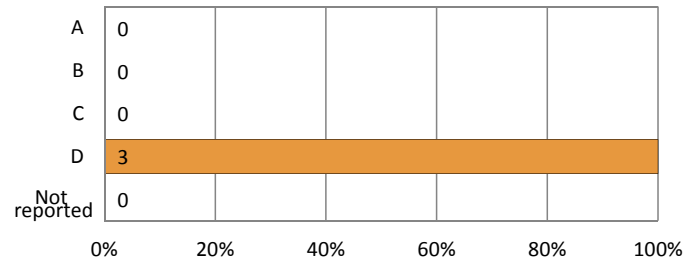
	District		Peer 2011	State 2011	National 2009
	2010	2011			
<b>Total</b>	<b>\$11,896</b>	<b>\$12,486</b>	<b>\$8,531</b>	<b>\$7,485</b>	<b>\$10,591</b>
<b>Classroom dollars</b>	<b>\$5,758</b>	<b>\$5,811</b>	<b>\$4,298</b>	<b>\$4,098</b>	<b>\$6,456</b>
<b>Nonclassroom dollars:</b>	<b>\$6,138</b>	<b>\$6,675</b>	<b>\$4,233</b>	<b>\$3,387</b>	<b>\$4,135</b>
Administration	1,228	1,576	1,104	728	1,147
Plant Operations	2,057	2,353	1,213	927	1,033
Food Service	580	685	421	375	404
Transportation	734	917	527	352	443
Student Support	763	782	651	571	573
Instruction Support	776	362	317	434	535

## STUDENT ACHIEVEMENT AND TEACHER INFORMATION

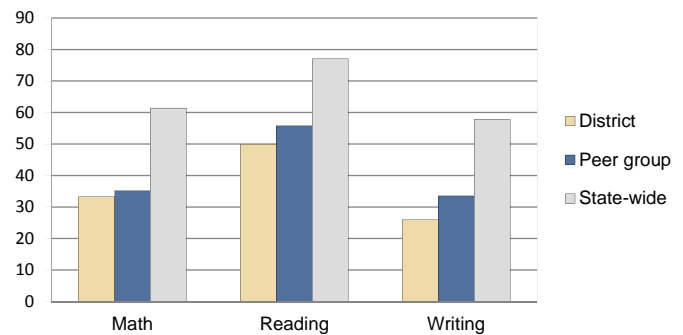
### District and school letter grades

District grade: **D**

School grades (number and percentage):



### Percentage of students meeting state standards (AIMS)



### Student and teacher information

Measure	District	Peer Average	State Average
Attendance rate	92%	92%	95%
Graduation rate (2010)	69%	68%	78%
Poverty rate (2010)	37%	40%	22%
Students per teacher	12.6	15.5	18.1
Average teacher salary	\$39,974	\$42,449	\$45,637
Average years of experience	9.7	12.2	10.9
Percent of teachers in first 3 years	25%	16%	16%

### Proposition 301 pay, goals, and results

Average additional salary earned by teachers: \$2,978

Type of goal	Goal met?
Student achievement	▴
Dropout/graduation rates	-
Student attendance	-
Parent/student satisfaction	-
Teacher attendance	-
Teacher professional development	-
Teacher evaluations	-
Tutoring	-
Other	-

▣ = yes, □ = no, ▴ = partially, and - = no goal set