

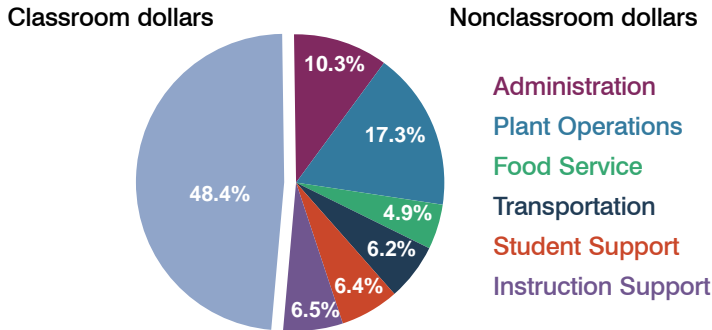
# Sanders Unified School District

Apache County  
Peer groups: Efficiency 5, Achievement 21  
Legislative district(s): 2 and 5

District size: Medium  
Students attending: 994  
Number of schools: 3

## OPERATIONAL EFFICIENCY

### Spending by function



### 5-year trend

Total spending per pupil increased by 22 percent. Spending in the classroom varied year to year, decreasing slightly overall from 49 to 48.4 percent. Spending on plant operations increased significantly, while spending in other nonclassroom areas varied year to year.

### District's cost measures relative to peer group

Operational Area	Measure	District	Peer Average	State Average
Administration	Cost per pupil	\$1,228	\$1,060	\$721
	Students per administrator	39	54	66
Plant Operations	Cost per square foot	\$6.31	\$5.34	\$6.25
	Square footage per student	326	243	146
Food Service	Cost per meal equivalent	\$2.96	\$2.83	\$2.41
Transportation	Cost per mile	\$1.75	\$2.55	\$3.35
	Miles per rider	399	360	282

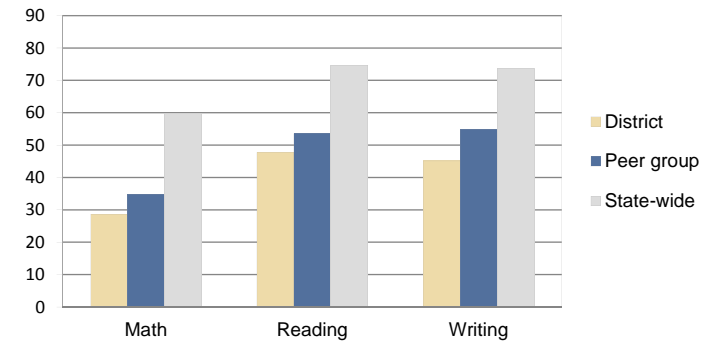
Very low   Low   Comparable   High   Very high

### Per-pupil spending by function

	District		Peer 2010	State 2010	National 2008
	2009	2010			
<b>Total</b>	<b>\$11,709</b>	<b>\$11,896</b>	<b>\$8,776</b>	<b>\$7,609</b>	<b>\$10,297</b>
<b>Classroom dollars</b>	<b>\$5,742</b>	<b>\$5,758</b>	<b>\$4,466</b>	<b>\$4,253</b>	<b>\$6,262</b>
<b>Nonclassroom dollars:</b>	<b>\$5,967</b>	<b>\$6,138</b>	<b>\$4,310</b>	<b>\$3,356</b>	<b>\$4,035</b>
Administration	1,334	1,228	1,060	721	1,109
Plant Operations	2,096	2,057	1,260	914	1,003
Food Service	626	580	399	366	390
Transportation	672	734	510	342	438
Student Support	591	763	657	581	556
Instruction Support	648	776	424	432	539

## STUDENT ACHIEVEMENT AND TEACHER INFORMATION

### Percentage of students meeting state standards (AIMS)



### Adequate Yearly Progress (AYP) toward federal goals

3 schools did not meet applicable AYP objectives for NCLB because they failed to meet 1 or more of the following objectives: academic progress (3); attendance rate (1); graduation rate (1).

### Student and teacher information

Measure	District	Peer Average	State Average
Attendance rate	91%	91%	94%
Graduation rate (2009)	64%	63%	76%
Poverty rate (2009)	41%	42%	21%
Student/teacher ratio	12.4	14.7	17.9
Average teacher salary	\$38,656	\$42,282	\$47,077
Average years' experience	10.3	12.3	10.6
Percent of teachers in first 3 years	19%	15%	20%

### Proposition 301

#### Teacher and other staff pay

On average, each teacher earned \$3,286 in additional pay, and each librarian, counselor, and behavior specialist earned between \$2,350 and \$3,537.

#### Performance pay plan goals and results

Type of goal	Goal met?
Student achievement	-
Dropout/graduation rates	-
Student attendance	-
Parent/student satisfaction	-
Teacher attendance	-
Teacher professional development	-
Teacher evaluations	▴
Tutoring	-
Other	-

■ = yes, □ = no, ▴ = partially, and - = no goal set