

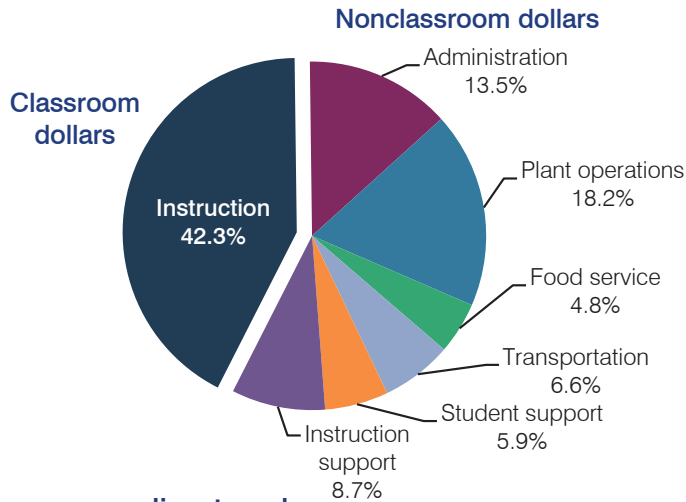
Sanders Unified School District

Apache County
 Efficiency peer groups 5 and T-9, Achievement peer group 7
 Legislative district(s): 7

District size, location: Medium, Rural
 Students attending: 756
 Number of schools: 3

OPERATIONAL EFFICIENCY

Spending by operational area



5-year spending trend

Student enrollment decreased by 26 percent, which contributed to the 47 percent increase in total spending per pupil. Spending in the classroom decreased from 49.1 to 42.3 percent. Overall, spending on instruction support increased substantially and spending on plant operations and student support increased. Spending on other nonclassroom areas varied year to year.

Cost measures relative to peer averages

Operational area	Measure	District	Peer average	State average
Administration	Cost per pupil	\$2,195	\$1,077	\$746
	Students per administrator	32	56	67
Plant operations	Cost per square foot	\$6.50	\$4.83	\$6.03
	Square footage per student	455	260	153
Food service	Cost per meal equivalent	\$3.02	\$3.14	\$2.58
Transportation	Cost per mile	\$2.43	\$2.42	\$3.55
	Cost per rider	\$1,324	\$1,013	\$1,015

Very low Low Comparable High Very high

Per pupil spending by operational area

	District		Peer average	State average	National average
	2012	2013	2013	2013	2011
Total	\$14,642	\$16,237	\$8,465	\$7,496	\$10,658
Classroom dollars	6,161	6,875	4,259	4,031	6,520
Nonclassroom dollars:	8,481	9,362	4,206	3,465	4,138
Administration	2,053	2,195	1,077	746	1,138
Plant operations	2,548	2,954	1,237	924	1,015
Food service	681	774	419	396	412
Transportation	982	1,074	535	369	452
Student support	853	951	630	582	593
Instruction support	1,364	1,414	308	448	528

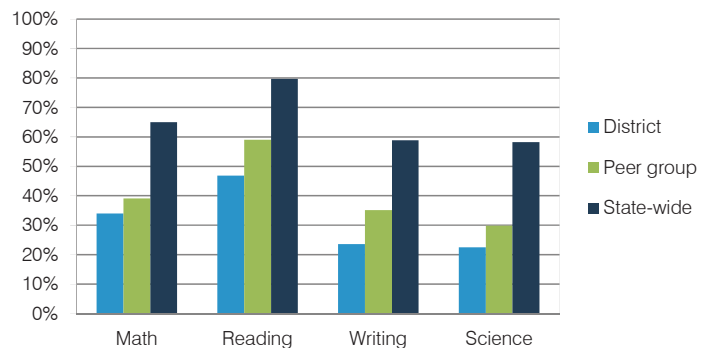
STUDENT ACHIEVEMENT, TEACHER MEASURES, AND FINANCIAL ASSESSMENT

ADE-reported district and school letter grades

District grade: **D**

Grade	Number of schools	Percentage of schools
A	0	0%
B	0	0%
C	0	0%
D	2	67%
F	1	33%
Not rated	0	0%

Students who met state standards (AIMS)



Student and teacher measures

Measure	District	Peer average	State average
Attendance rate	90%	92%	94%
Graduation rate (2012)	69%	69%	77%
Poverty rate (2012)	44%	42%	25%
Students per teacher	11.1	15.1	18.3
Average teacher salary	\$41,185	\$42,614	\$45,264
Amount from Proposition 301	\$2,624	\$3,663	\$3,784
Average years of teacher experience	9.4	12.2	10.9
Percentage of teachers in first 3 years	39%	15%	19%

Financial stress assessment

Overall financial stress level: **Low**

Measure: 2011 through 2013

Measure	Assessment
Number of students attending district	Large decrease
Spending exceeded operating/capital budgets	No overspending
Spending increase election results	No election held
Operating reserve percentage (max. 4%), trend	4.0%, Steady
Years of capital reserve held	More than 3 years
Current financial and internal control status	Compliant

Stress level

