

Sanders Unified School District

Apache County

Efficiency peer groups 5 and T-10, Achievement peer group 7

Legislative district(s): 7

District size, location:

Medium, Rural

Students attending:

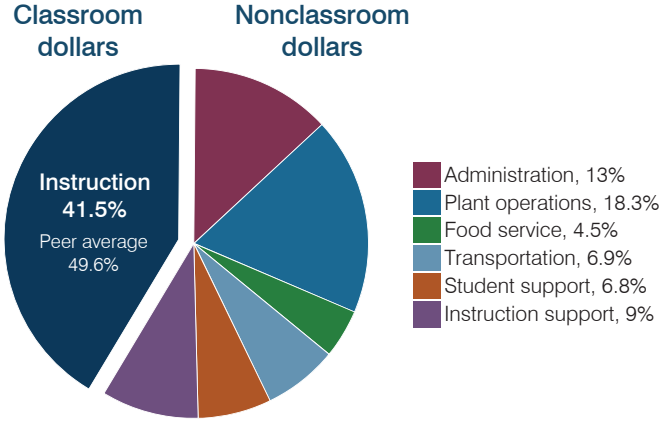
730

Number of schools:

3

OPERATIONAL EFFICIENCY

Spending by operational area



Efficiency measures relative to peer averages

Operational area	Measure	District	Peer average	State average
Administration	Cost per pupil	\$2,072	\$1,145	\$806
	Students per administrative position	29	56	67
Plant operations	Cost per square foot	\$6.21	\$5.22	\$6.10
	Square footage per student	470	270	154
Food service	Cost per meal	\$3.16	\$3.40	\$2.81
Transportation	Cost per mile	\$2.01	\$1.89	\$3.72
	Cost per rider	\$1,350	\$1,242	\$1,092

Very low Low Comparable High Very high

Per pupil spending

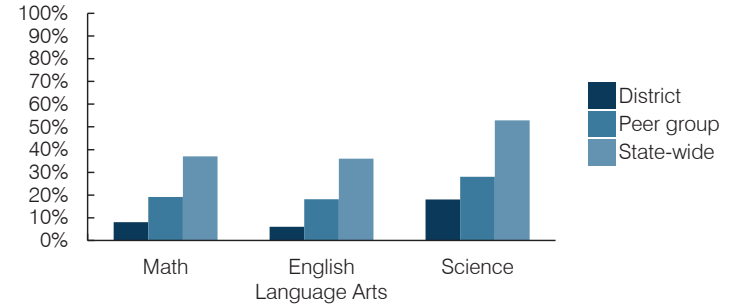
Spending by area	District		Peer average 2016	State average 2016
	2015	2016		
Instruction	\$ 6,798	\$ 6,628	\$ 4,576	\$ 4,145
Administration	1,984	2,072	1,145	806
Plant operations	2,925	2,919	1,342	939
Food service	753	718	450	415
Transportation	1,268	1,106	522	364
Student support	1,049	1,083	695	633
Instruction support	1,936	1,447	396	444
Total operational	\$ 16,713	\$ 15,973	\$ 9,126	\$ 7,746
Land and buildings	\$ 3,213	\$ 243	\$ 452	\$ 621
Equipment	538	446	498	400
Interest	0	0	243	216
Other	2	1	65	153
Total nonoperational	\$ 3,753	\$ 690	\$ 1,258	\$ 1,390
Total per pupil spending	\$ 20,466	\$ 16,663	\$ 10,384	\$ 9,136

STUDENT AND TEACHER MEASURES, FINANCIAL ASSESSMENT, AND REVENUES

Student and teacher measures

Measure	District	Peer average	State average
Attendance rate (2015)	91%	92%	94%
Graduation rate (2015)	76%	77%	78%
Poverty rate (2015)	46%	42%	23%
Students per teacher	11.8	15.6	18.6
Average teacher salary	\$36,643	\$45,126	\$46,384
Amount from Proposition 301	\$5,204	\$4,619	\$5,315
Average years of teacher experience	9.6	12.6	11.0
Percentage of teachers in first 3 years	30%	15%	20%

Students who passed state assessments



Financial stress assessment

Overall financial stress level: **Low**

Measure: 2014 through 2016

Assessment

Change in number of district students	Moderate decrease
Spending exceeded operating/capital budgets	No overspending
Spending increase election results	No election held
Operating reserve percentage, Trend	4.8%, Increasing
Years of capital reserve held	Impact Aid Fund reserve
Current financial and internal control status	Marginally compliant

Low Moderate High

Per pupil revenues

Revenues by source	District		Peer average 2016	State average 2016
	2015	2016		
Federal	\$ 11,768	\$ 9,636	\$ 4,015	\$ 1,301
State	6,534	6,431	4,190	3,780
Local	904	849	4,081	4,268
Total revenues per pupil	\$ 19,206	\$ 16,916	\$ 12,286	\$ 9,349

Select revenues from common sources

Equalization formula funding	\$ 7,497	\$ 7,375	\$ 5,922	\$ 5,471
Grants	4,343	3,409	1,805	1,182
Donations and tax credits	7	1	139	86

Select revenues from less common sources

	Number of peers receiving		
Desegregation	\$ 0	\$ 0	1 of 29
Small school adjustment	0	0	0 of 29
Federal impact aid	7,456	6,236	14 of 29
Voter-approved levy increases	0	0	19 of 29

Classroom dollar percentage

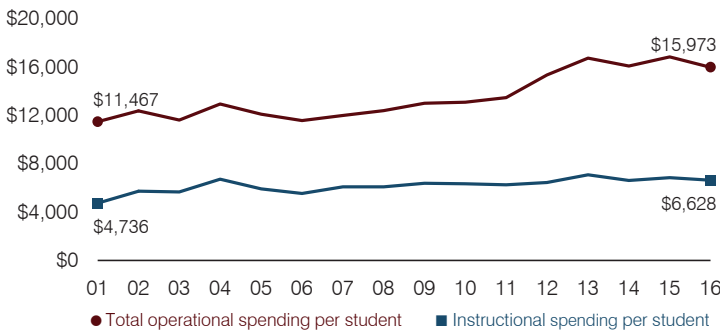
Year:	2001	2002	2003	2004	2005	2006	2007	2008	2009	2010	2011	2012	2013	2014	2015	2016
Percentage:	41.3	46.3	48.8	52.0	49.0	47.8	50.8	49.1	49.0	48.4	46.5	42.1	42.3	41.1	40.7	41.5

OPERATIONAL TRENDS
Fiscal years as indicated

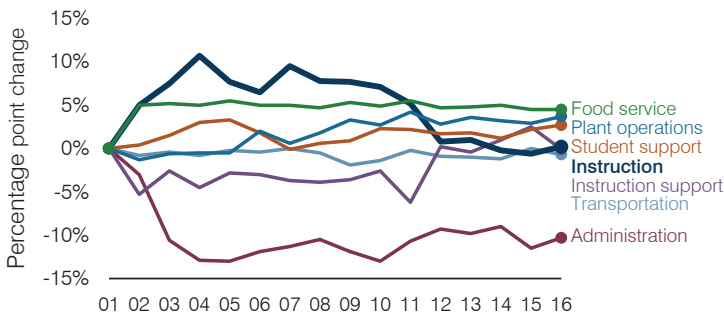
5-year spending trend (2011 through 2016)

Student enrollment decreased by 22 percent, which contributed to the 19 percent increase in total operational spending per pupil, adjusted for inflation. The percentage of dollars spent in the classroom decreased overall from 46.5 to 41.5 percent. Overall, as a percentage of total operational spending, instruction support increased substantially and student support increased slightly.

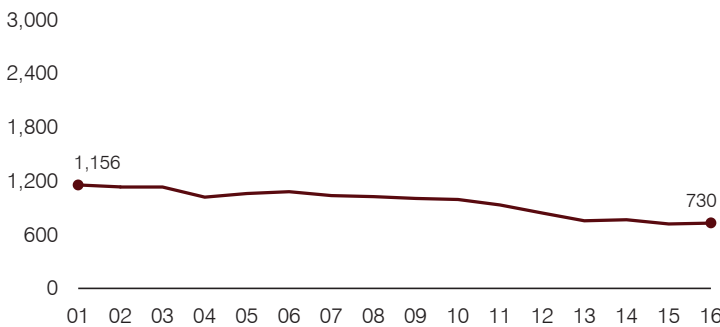
Total operational and instructional spending per pupil (inflation adjusted to 2016 dollars)



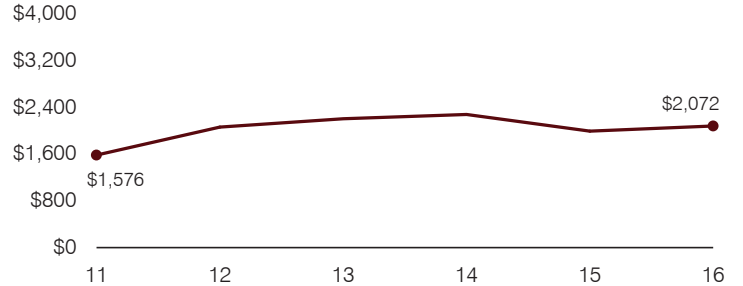
Changes in operational spending percentages



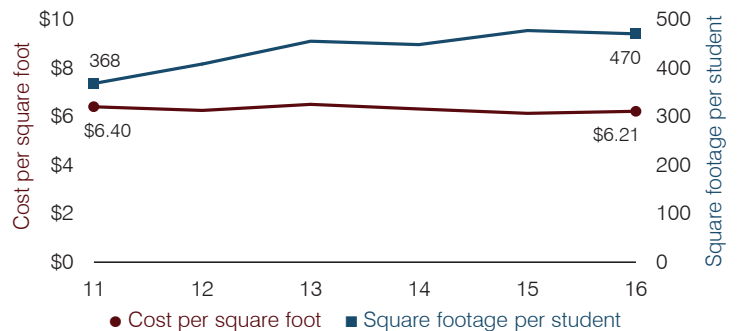
Students attending



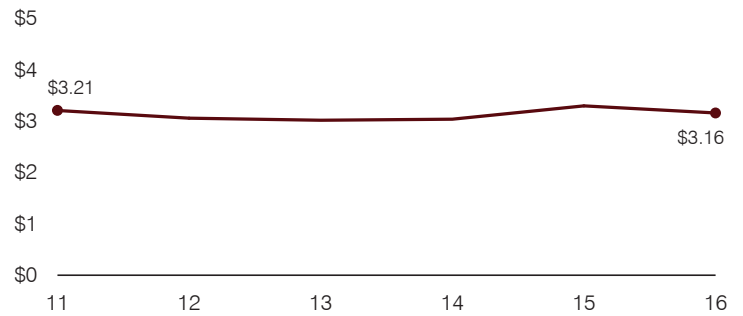
Administrative cost per pupil



Plant cost per square foot and square footage per student



Food service cost per meal



Transportation costs per mile and per rider

