

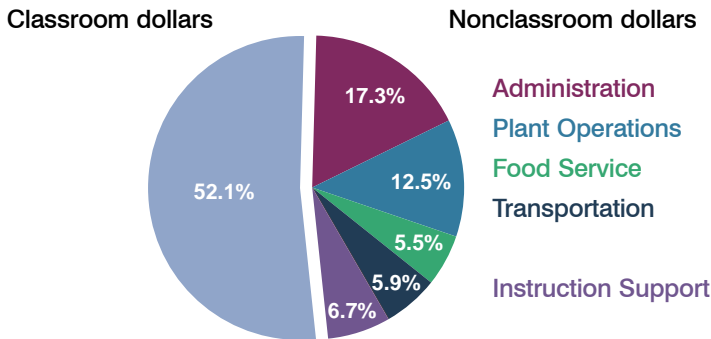
Santa Cruz Elementary School District

Santa Cruz County
Peer groups: Efficiency Group 11, Achievement Group 21
Legislative district(s): 25

District size: Small
Students attending: 206
Number of schools: 1

OPERATIONAL EFFICIENCY

Spending by operational area



5-year trend

Total spending per pupil increased by 20 percent. Spending in the classroom varied year to year, decreasing significantly overall from 60.9 to 52.1 percent. Spending on administration and transportation decreased, while spending on plant operations, food service, and instruction support increased significantly.

District's cost measures relative to peer group

Operational Area	Measure	District	Peer Average	State Average
Administration	Cost per pupil	\$1,628	\$1,132	\$728
	Students per administrator	47	54	66
Plant Operations	Cost per square foot	\$10.77	\$7.44	\$6.10
	Square footage per student	109	142	152
Food Service	Cost per meal equivalent	\$3.38	\$2.63	\$2.45
Transportation	Cost per mile	\$1.17	\$2.07	\$3.39
	Miles per rider	618	259	283

Very low Low Comparable High Very high

Per-pupil spending by operational area

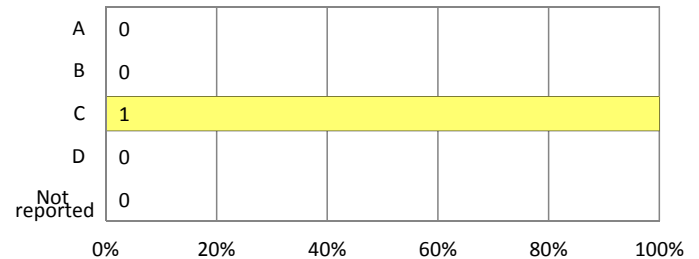
	District		Peer 2011	State 2011	National 2009
	2010	2011			
Total	\$9,944	\$9,397	\$8,149	\$7,485	\$10,591
Classroom dollars	\$5,442	\$4,892	\$4,324	\$4,098	\$6,456
Nonclassroom dollars:	\$4,502	\$4,505	\$3,825	\$3,387	\$4,135
Administration	1,265	1,628	1,132	728	1,147
Plant Operations	1,226	1,173	1,013	927	1,033
Food Service	612	518	496	375	404
Transportation	416	554	443	352	443
Student Support	2	0	486	571	573
Instruction Support	981	632	255	434	535

STUDENT ACHIEVEMENT AND TEACHER INFORMATION

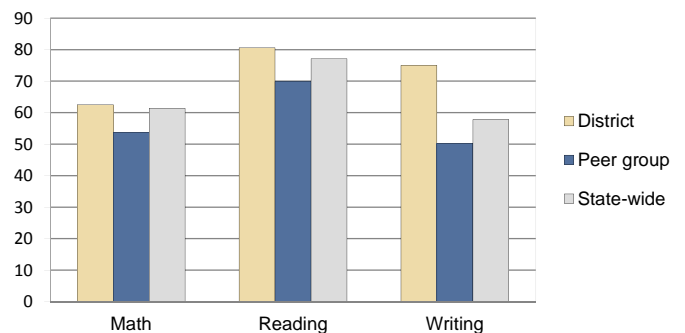
District and school letter grades

District grade: **C**

School grades (number and percentage):



Percentage of students meeting state standards (AIMS)



Student and teacher information

Measure	District	Peer Average	State Average
Attendance rate	95%	95%	95%
Graduation rate (2010)	N/A	N/A	N/A
Poverty rate (2010)	37%	38%	22%
Students per teacher	17.2	13.1	18.1
Average teacher salary	\$38,675	\$42,832	\$45,637
Average years of experience	16.6	10.3	10.9
Percent of teachers in first 3 years	0%	19%	16%

Proposition 301 pay, goals, and results

Average additional salary earned by teachers: \$3,302

Type of goal	Goal met?
Student achievement	■
Dropout/graduation rates	-
Student attendance	-
Parent/student satisfaction	-
Teacher attendance	-
Teacher professional development	-
Teacher evaluations	-
Tutoring	-
Other	-

■ = yes, □ = no, ▴ = partially, and - = no goal set