

# Santa Cruz Valley Union High School District

Pinal County

Efficiency peer groups 6 and T-10, Achievement peer group 10

Legislative district(s): 8 and 11

District size, location:

Small, Town

Students attending:

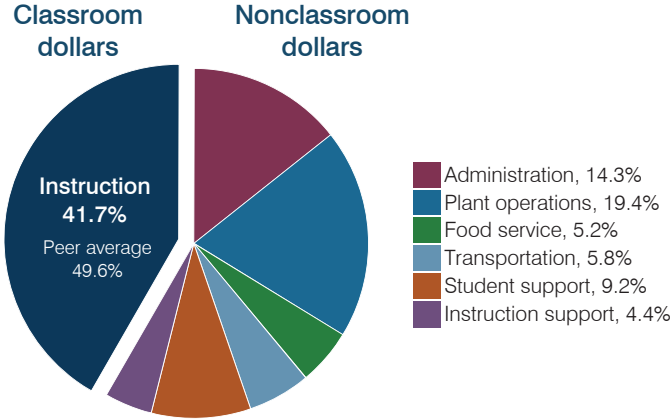
448

Number of schools:

1

## OPERATIONAL EFFICIENCY

### Spending by operational area



### Efficiency measures relative to peer averages

Operational area	Measure	District	Peer average	State average
Administration	Cost per pupil	\$1,312	\$1,647	\$806
	Students per administrative position	53	45	67
Plant operations	Cost per square foot	\$5.28	\$4.72	\$6.10
	Square footage per student	338	341	154
Food service	Cost per meal	\$3.22	\$3.52	\$2.81
Transportation	Cost per mile	\$2.51	\$1.89	\$3.72
	Cost per rider	\$1,316	\$1,242	\$1,092

### Per pupil spending

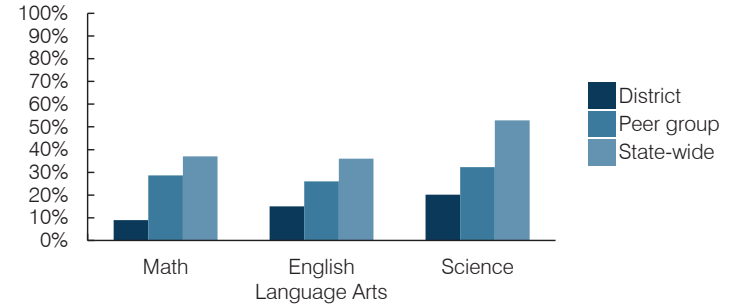
Spending by area	District		Peer average 2016	State average 2016
	2015	2016		
Instruction	\$ 3,985	\$ 3,837	\$ 5,245	\$ 4,145
Administration	1,522	1,312	1,647	806
Plant operations	1,940	1,788	1,511	939
Food service	461	479	496	415
Transportation	520	537	517	364
Student support	859	842	640	633
Instruction support	414	407	409	444
<b>Total operational</b>	<b>\$ 9,701</b>	<b>\$ 9,202</b>	<b>\$ 10,465</b>	<b>\$ 7,746</b>
Land and buildings	\$ 70	\$ 243	\$ 455	\$ 621
Equipment	639	854	488	400
Interest	404	269	158	216
Other	12	11	47	153
<b>Total nonoperational</b>	<b>\$ 1,125</b>	<b>\$ 1,377</b>	<b>\$ 1,148</b>	<b>\$ 1,390</b>
<b>Total per pupil spending</b>	<b>\$ 10,826</b>	<b>\$ 10,579</b>	<b>\$ 11,613</b>	<b>\$ 9,136</b>

## STUDENT AND TEACHER MEASURES, FINANCIAL ASSESSMENT, AND REVENUES

### Student and teacher measures

Measure	District	Peer average	State average
Attendance rate (2015)	89%	92%	94%
Graduation rate (2015)	76%	85%	78%
Poverty rate (2015)	22%	20%	23%
Students per teacher	22.4	16.7	18.6
Average teacher salary	\$44,045	\$41,003	\$46,384
Amount from Proposition 301	\$8,292	\$6,211	\$5,315
Average years of teacher experience	10.2	10.1	11.0
Percentage of teachers in first 3 years	5%	15%	20%

### Students who passed state assessments



### Financial stress assessment

Overall financial stress level: **Low**

Measure: 2014 through 2016

Measure	Assessment
Change in number of district students	Increase
Spending exceeded operating/capital budgets	No overspending
Spending increase election results	Voter-approved
Operating reserve percentage, Trend	5.5%, Increasing
Years of capital reserve held	1 to 3 years
Current financial and internal control status	Compliant

Low Moderate High

### Per pupil revenues

Revenues by source	District		Peer average 2016	State average 2016
	2015	2016		
Federal	\$ 1,370	\$ 1,276	\$ 2,338	\$ 1,301
State	1,535	2,464	3,632	3,780
Local	11,387	9,917	7,286	4,268
<b>Total revenues per pupil</b>	<b>\$ 14,292</b>	<b>\$ 13,657</b>	<b>\$ 13,256</b>	<b>\$ 9,349</b>

### Select revenues from common sources

Source	District	Peer average	State average
Equalization formula funding	\$ 6,534	\$ 6,610	\$ 7,157
Grants	1,393	1,310	2,186
Donations and tax credits	53	33	264

### Select revenues from less common sources

Source	District	Peer average	State average
Desegregation	\$ 0	\$ 0	0 of 20
Small school adjustment	0	0	5 of 20
Federal impact aid	0	0	5 of 20
Voter-approved levy increases	5,092	4,445	15 of 20

**Classroom dollar percentage**

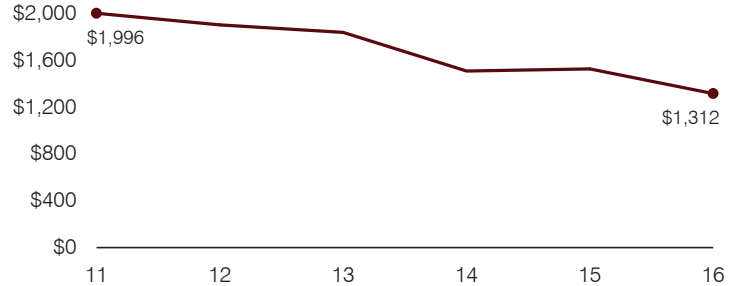
Year:	2001	2002	2003	2004	2005	2006	2007	2008	2009	2010	2011	2012	2013	2014	2015	2016
Percentage:	54.7	54.3	52.8	52.2	49.6	49.0	47.6	41.5	44.2	36.1	41.7	43.2	39.8	40.3	41.1	41.7

**OPERATIONAL TRENDS**  
Fiscal years as indicated

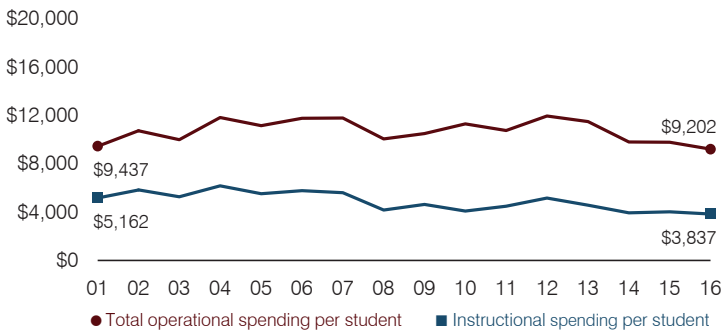
**5-year spending trend (2011 through 2016)**

Total operational spending per pupil, adjusted for inflation, decreased by 14 percent. The percentage of dollars spent in the classroom varied year to year, ranging overall from a high of 41.7 to a low of 39.8 percent. As a percentage of total operational spending, administration decreased substantially, while transportation and student support increased overall.

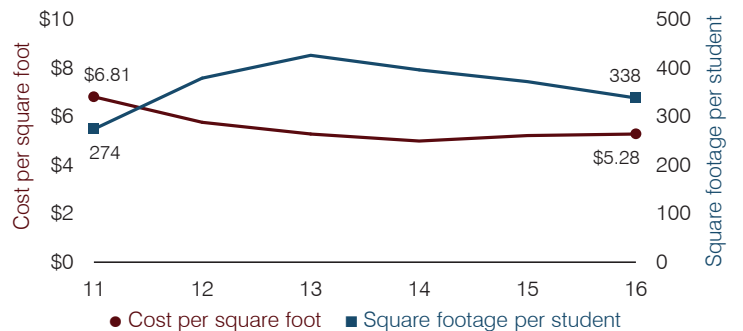
**Administrative cost per pupil**



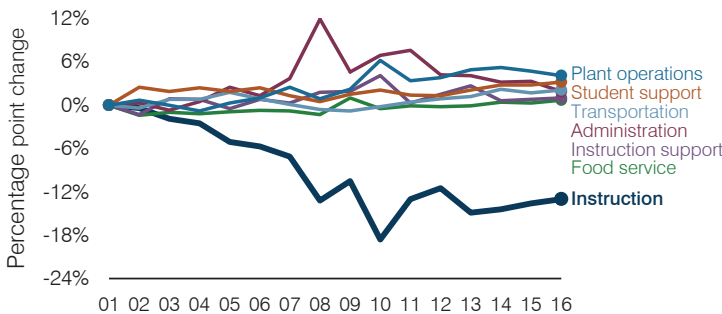
**Total operational and instructional spending per pupil (inflation adjusted to 2016 dollars)**



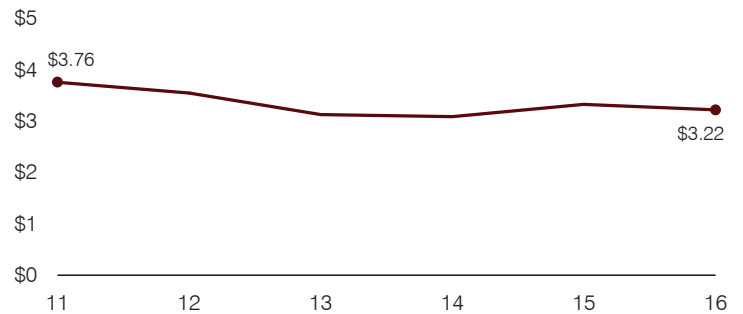
**Plant cost per square foot and square footage per student**



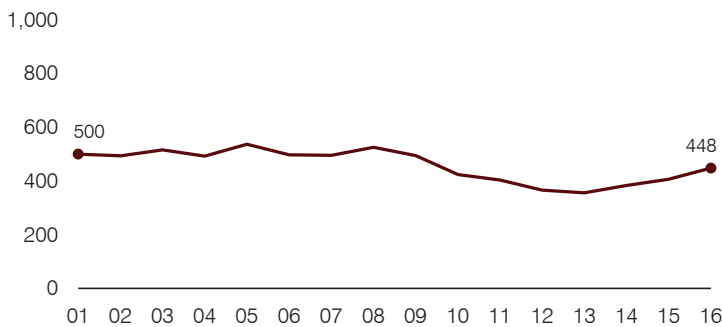
**Changes in operational spending percentages**



**Food service cost per meal**



**Students attending**



**Transportation costs per mile and per rider**

