

# Santa Cruz Valley Union High School District

Pinal County

Efficiency peer groups 6 and T-10, Achievement peer group 11<sup>1</sup>

Legislative district(s): 8 and 11

District size, location:

Small, Town

Students attending:

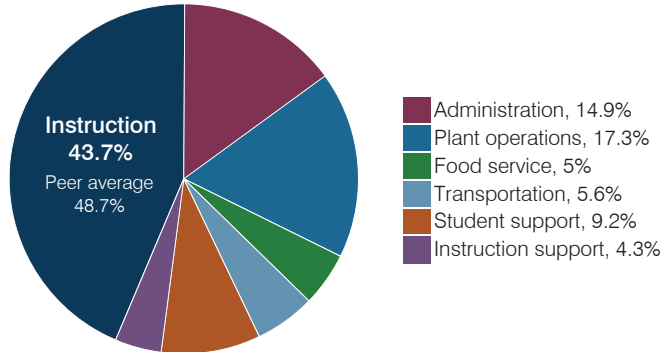
445

Number of schools:

1

## OPERATIONAL EFFICIENCY

### Spending by operational area



### Efficiency measures relative to peer averages

Operational area	Measure	District	Peer average	State average
Administration	Cost per pupil	\$1,460	\$1,784	\$844
	Students per administrative position	46	44	67
Plant operations	Cost per square foot	\$4.98	\$4.85	\$6.30
	Square footage per student	341	348	155
Food service	Cost per meal	\$3.55	\$3.70	\$2.88
Transportation	Cost per mile	\$2.88	\$1.93	\$3.84
	Cost per rider	\$2,798	\$1,267	\$1,198

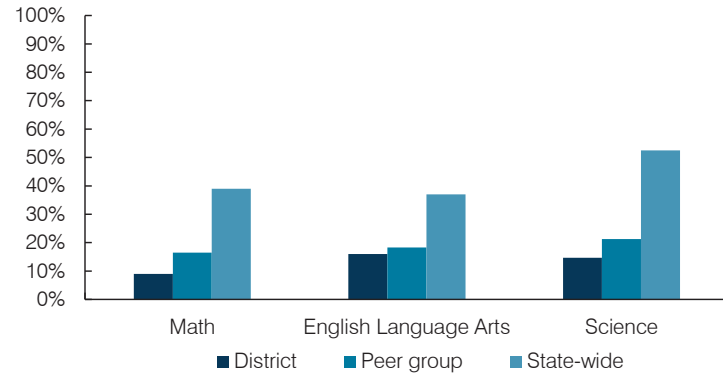
Very low   Low   Comparable   High   Very high

### Per pupil spending

Spending by area	District		Peer average 2017	State average 2017
	2016	2017		
Instruction	\$ 3,837	\$ 4,284	\$ 5,470	\$ 4,377
Administration	1,312	1,460	1,784	844
Plant operations	1,788	1,700	1,587	977
Food service	479	497	534	422
Transportation	537	554	571	381
Student support	842	900	642	679
Instruction support	407	417	423	461
<b>Total operational</b>	<b>\$ 9,202</b>	<b>\$ 9,812</b>	<b>\$ 11,011</b>	<b>\$ 8,141</b>
Land and buildings	\$ 243	\$ 1,097	\$ 437	\$ 691
Equipment	854	1,372	479	424
Interest	269	159	179	236
Other	11	12	45	161
<b>Total nonoperational</b>	<b>\$ 1,377</b>	<b>\$ 2,640</b>	<b>\$ 1,140</b>	<b>\$ 1,512</b>
<b>Total per pupil spending</b>	<b>\$ 10,579</b>	<b>\$ 12,452</b>	<b>\$ 12,151</b>	<b>\$ 9,653</b>

## STUDENT ACHIEVEMENT, STUDENT AND TEACHER MEASURES, AND REVENUES

### Students who passed state assessments



### Student and teacher measures

Measure	District	Peer average	State average
Attendance rate	94%	91%	94%
Graduation rate (2016)	78%	84%	80%
Poverty rate (2016)	27%	26%	22%
Special education population	12%	11%	12%
Students per teacher	19.3	14.8	18.5
Average teacher salary	\$44,005	\$43,276	\$48,372
Amount from Prop 301	\$8,408	\$5,503	\$5,840
Average years of teacher experience	10.2	11.5	11.3
Percentage of teachers in first 3 years	5%	19%	19%

### Per pupil revenues

Revenues by source	District		Peer average 2017	State average 2017
	2016	2017		
Federal	\$ 1,276	\$ 1,138	\$ 2,411	\$ 1,318
State	2,464	3,130	3,824	3,831
Local	9,917	9,367	7,054	4,443
<b>Total per pupil revenues</b>	<b>\$ 13,657</b>	<b>\$ 13,635</b>	<b>\$ 13,289</b>	<b>\$ 9,592</b>

### Select revenues from common sources

	District 2016	District 2017	Peer average 2017	State average 2017
Equalization formula funding	\$ 6,610	\$ 6,657	\$ 7,159	\$ 5,503
Amount from Prop 123	268	261	285	245
Prop 123 additional funding	52	56	57	46
Grants	1,310	1,321	1,876	1,185
Donations and tax credits	33	86	246	89

### Select revenues from less common sources

	District 2016	District 2017	Number of peers receiving
Desegregation	\$ 0	\$ 0	0 of 20
Small school adjustment	0	0	4 of 20
Federal impact aid	0	0	5 of 20
Voter-approved levy increases	4,445	3,299	15 of 20

<sup>1</sup> See Appendix A for information such as districts included in each peer group and Appendix B for sources and methodology.

**Instructional spending percentage**

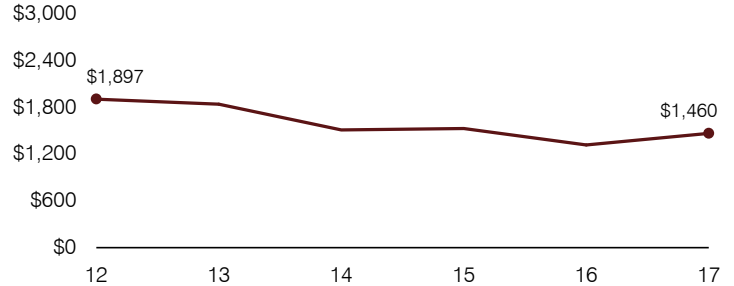
Year:	2001	2002	2003	2004	2005	2006	2007	2008	2009	2010	2011	2012	2013	2014	2015	2016	2017
Percentage:	54.7	54.3	52.8	52.2	49.6	49.0	47.6	41.5	44.2	36.1	41.7	43.2	39.8	40.3	41.1	41.7	43.7

**OPERATIONAL TRENDS AND FINANCIAL STRESS ASSESSMENT**  
Fiscal years as indicated

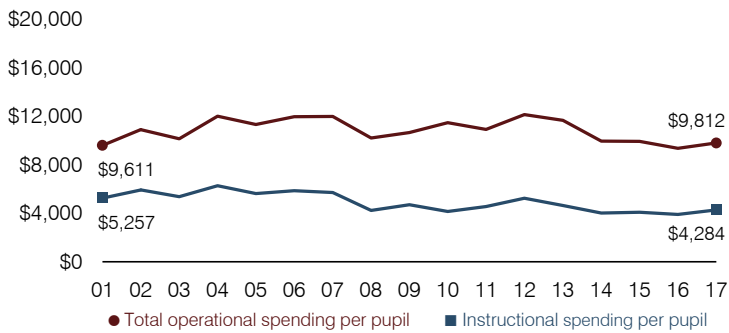
**5-year spending trend (2012 through 2017)**

Student enrollment increased by 21 percent, which contributed to the 19 percent decrease in total operational spending per pupil, adjusted for inflation. The percentage of dollars spent on instruction varied year to year, ranging overall from a high of 43.7 to a low of 39.8 percent. Overall, as a percentage of total operational spending, administration and plant operations decreased, while transportation increased.

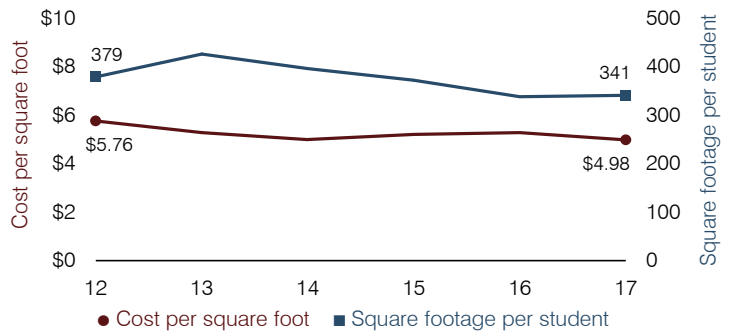
**Administrative cost per pupil**



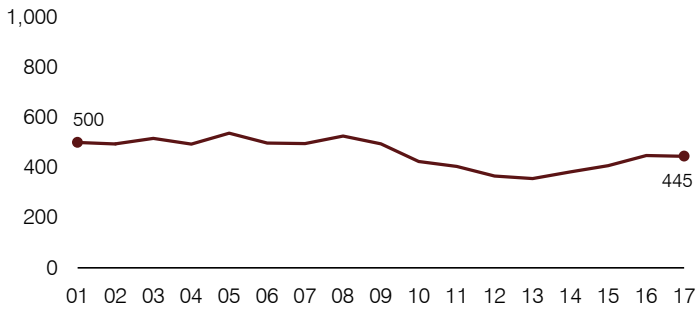
**Total operational and instructional spending per pupil (inflation adjusted to 2017 dollars)**



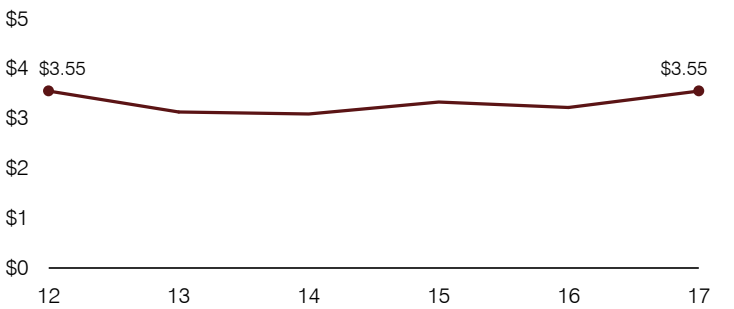
**Plant cost per square foot and square footage per student**



**Students attending**



**Food service cost per meal**



**Financial stress assessment**

Overall financial stress level: **Low**

Measure: 2015 through 2017	Assessment
Change in number of district students	Increase
Spending exceeded operating/capital budgets	No overspending
Spending increase election results	Voter-approved
Operating reserve percentage, Trend	8.5%, Increasing
Years of capital reserve held	1 to 3 years
Current financial and internal control status	Compliant

Low      Moderate      High

**Transportation costs per mile and per rider**

