

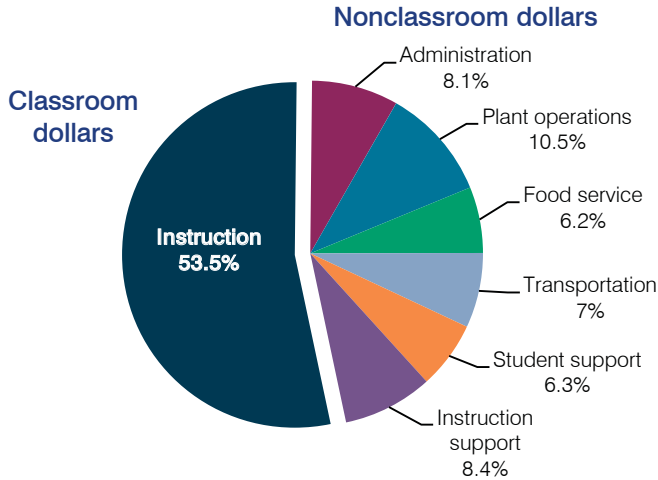
Santa Cruz Valley Unified School District

Santa Cruz County
 Efficiency peer groups 4 and T-8, Achievement peer group 5
 Legislative district(s): 2

District size / location: Medium-Large, Rural
 Students attending: 3,272
 Number of schools: 6

OPERATIONAL EFFICIENCY

Spending by operational area



5-year spending trend

Total spending per pupil increased by 18 percent. Spending in the classroom decreased overall from 57.4 to 53.5 percent. Spending on administration decreased and spending on plant operations and instruction support increased substantially. Spending on other nonclassroom areas remained fairly stable.

Cost measures relative to peer averages

Operational area	Measure	District	Peer average	State average
Administration	Cost per pupil	\$602	\$748	\$736
	Students per administrator	64	66	66
Plant operations	Cost per square foot	\$5.19	\$5.53	\$6.09
	Square footage per student	152	173	152
Food service	Cost per meal equivalent	\$2.62	\$2.56	\$2.47
Transportation	Cost per mile	\$3.12	\$2.87	\$3.50
	Cost per rider	\$770	\$726	\$982

Very low Low Comparable High Very high

Per-pupil spending by operational area

	District		Peer average	State average	National average
	2011	2012	2012	2012	2010
Total	\$6,886	\$7,470	\$7,007	\$7,475	\$10,652
Classroom dollars	3,750	4,000	3,682	4,053	6,526
Nonclassroom dollars:	3,136	3,470	3,325	3,422	4,126
Administration	561	602	748	736	1,139
Plant operations	672	789	933	928	1,012
Food service	451	464	354	382	405
Transportation	452	522	369	362	443
Student support	469	468	540	578	592
Instruction support	531	625	381	436	535

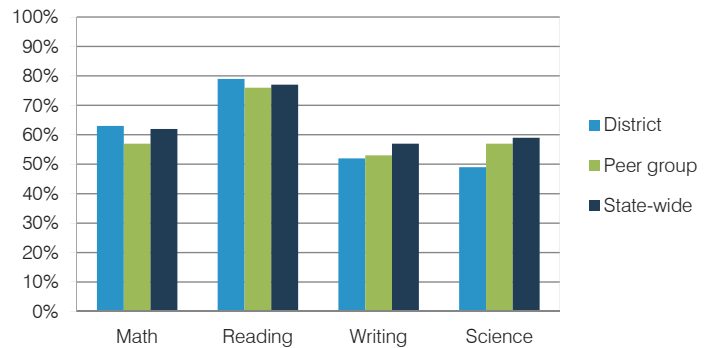
STUDENT ACHIEVEMENT, TEACHER MEASURES, AND FINANCIAL ASSESSMENT

ADE-reported district and school letter grades

District grade: **A**

Grade	Number of schools	Percentage of schools
A	2	33%
B	4	67%
C	0	0%
D	0	0%
F	0	0%
Not rated	0	0%

Percentage of students who met state standards (AIMS)



Student and teacher measures

Measure	District	Peer average	State average
Attendance rate	95%	94%	94%
Graduation rate (2011)	81%	82%	78%
Poverty rate (2011)	27%	24%	25%
Students per teacher	17.0	17.0	18.1
Average teacher salary	\$43,504	\$40,636	\$45,193
Amount from Proposition 301	\$3,201	\$3,192	\$3,195
Average years of teacher experience	9.0	11.8	11.0
Percentage of teachers in first 3 years	23%	15%	16%

Financial stress assessment

Overall financial stress level: **Low**

Measure: 2010 through 2012	Assessment
Number of students attending	Moderate decrease
Spending exceeded operating/capital budgets	No overspending
Spending increase election results	Voter-approved
Operating reserve percentage (max. 4%), trend	3.9%, Varying
Years of capital reserve held	More than 3 years
Current financial and internal control status	Compliant

