

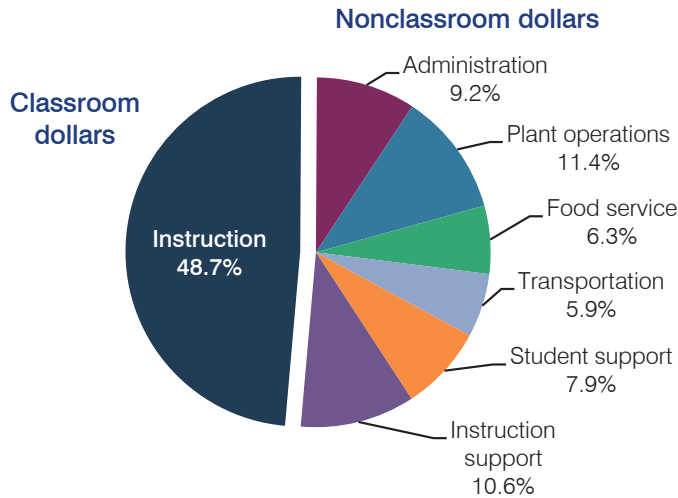
# Santa Cruz Valley Unified School District

Santa Cruz County  
 Efficiency peer groups 4 and T-7, Achievement peer group 6  
 Legislative district(s): 2

District size, location: Medium-Large, Rural  
 Students attending: 3,234  
 Number of schools: 6

## OPERATIONAL EFFICIENCY

### Spending by operational area



### 5-year spending trend

Total spending per pupil increased by 7 percent. Spending in the classroom decreased overall from 56.7 to 48.7 percent. Overall, spending on student support and instruction support increased substantially and spending on plant operations increased. Spending on transportation decreased, while spending on other nonclassroom areas remained fairly stable.

### Cost measures relative to peer averages

Operational area	Measure	District	Peer average	State average
Administration	Cost per pupil	\$675	\$764	\$746
	Students per administrator	62	67	67
Plant operations	Cost per square foot	\$5.40	\$5.34	\$6.03
	Square footage per student	154	176	153
Food service	Cost per meal equivalent	\$2.69	\$2.67	\$2.58
Transportation	Cost per mile	\$2.74	\$3.06	\$3.55
	Cost per rider	\$633	\$677	\$1,015

Very low Low Comparable High Very high

### Per pupil spending by operational area

	District		Peer average	State average	National average
	2012	2013	2013	2013	2011
<b>Total</b>	<b>\$7,470</b>	<b>\$7,305</b>	<b>\$7,187</b>	<b>\$7,496</b>	<b>\$10,658</b>
<b>Classroom dollars</b>	<b>4,000</b>	<b>3,555</b>	<b>3,779</b>	<b>4,031</b>	<b>6,520</b>
<b>Nonclassroom dollars:</b>	<b>3,470</b>	<b>3,750</b>	<b>3,408</b>	<b>3,465</b>	<b>4,138</b>
Administration	602	675	764	746	1,138
Plant operations	789	831	921	924	1,015
Food service	464	460	364	396	412
Transportation	522	435	394	369	452
Student support	468	575	561	582	593
Instruction support	625	774	404	448	528

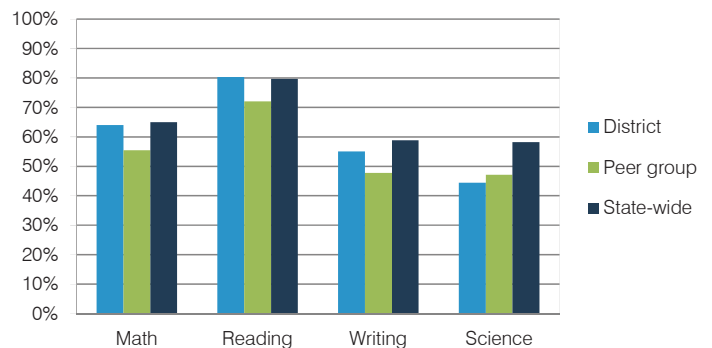
## STUDENT ACHIEVEMENT, TEACHER MEASURES, AND FINANCIAL ASSESSMENT

### ADE-reported district and school letter grades

District grade: **B**

Grade	Number of schools	Percentage of schools
A	2	33%
B	4	67%
C	0	0%
D	0	0%
F	0	0%
Not rated	0	0%

### Students who met state standards (AIMS)



### Student and teacher measures

Measure	District	Peer average	State average
Attendance rate	94%	93%	94%
Graduation rate (2012)	80%	80%	77%
Poverty rate (2012)	28%	33%	25%
Students per teacher	17.3	15.3	18.3
Average teacher salary	\$39,949	\$43,207	\$45,264
Amount from Proposition 301	\$3,829	\$3,525	\$3,784
Average years of teacher experience	8.5	11.9	10.9
Percentage of teachers in first 3 years	28%	20%	19%

### Financial stress assessment

Overall financial stress level: **Low**

Measure: 2011 through 2013

Measure	Assessment
Number of students attending district	Moderate decrease
Spending exceeded operating/capital budgets	No overspending
Spending increase election results	No election held
Operating reserve percentage (max. 4%), trend	3.8%, Increasing
Years of capital reserve held	More than 3 years
Current financial and internal control status	Compliant

Stress level

