

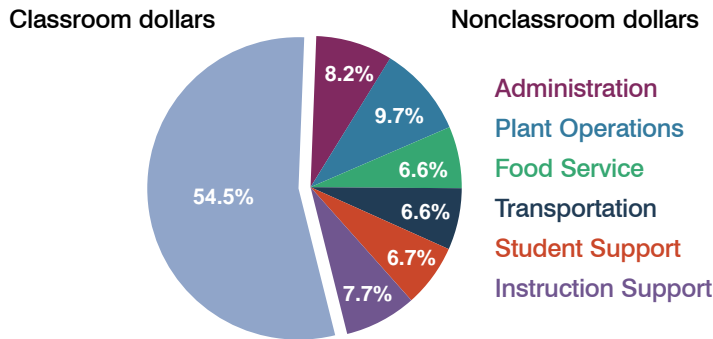
# Santa Cruz Valley Unified School District

Santa Cruz County  
Peer groups: Efficiency Group 4, Achievement Group 7  
Legislative district(s): 25

District size: Medium-Large  
Students attending: 3,396  
Number of schools: 6

## OPERATIONAL EFFICIENCY

### Spending by operational area

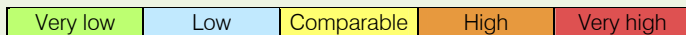


### 5-year trend

Total spending per pupil increased by 12 percent. Spending in the classroom decreased significantly from 59 to 54.5 percent. Overall, spending on administration decreased, and spending on plant operations and instruction support increased significantly. Spending on other nonclassroom areas remained fairly stable.

### District's cost measures relative to peer group

Operational Area	Measure	District	Peer Average	State Average
Administration	Cost per pupil	\$561	\$736	\$728
	Students per administrator	67	65	66
Plant Operations	Cost per square foot	\$4.59	\$5.52	\$6.10
	Square footage per student	146	169	152
Food Service	Cost per meal equivalent	\$2.55	\$2.60	\$2.45
Transportation	Cost per mile	\$2.92	\$2.93	\$3.39
	Miles per rider	208	324	283



### Per-pupil spending by operational area

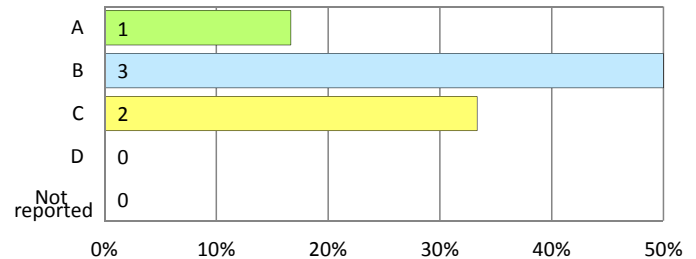
	District		Peer 2011	State 2011	National 2009
	2010	2011			
<b>Total</b>	<b>\$6,884</b>	<b>\$6,886</b>	<b>\$7,026</b>	<b>\$7,485</b>	<b>\$10,591</b>
<b>Classroom dollars</b>	<b>\$3,667</b>	<b>\$3,750</b>	<b>\$3,783</b>	<b>\$4,098</b>	<b>\$6,456</b>
<b>Nonclassroom dollars:</b>	<b>\$3,217</b>	<b>\$3,136</b>	<b>\$3,243</b>	<b>\$3,387</b>	<b>\$4,135</b>
Administration	594	561	736	728	1,147
Plant Operations	745	672	917	927	1,033
Food Service	461	451	351	375	404
Transportation	492	452	360	352	443
Student Support	415	469	528	571	573
Instruction Support	510	531	351	434	535

## STUDENT ACHIEVEMENT AND TEACHER INFORMATION

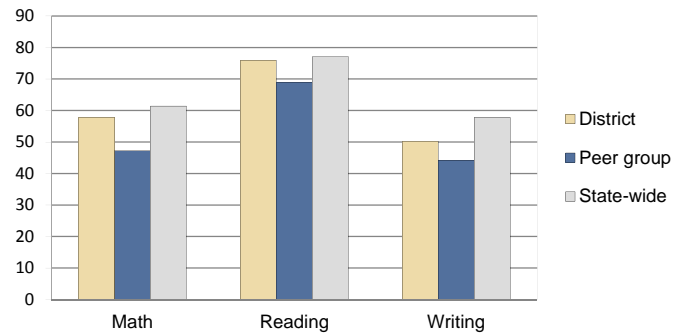
### District and school letter grades

District grade: **B**

### School grades (number and percentage):



### Percentage of students meeting state standards (AIMS)



### Student and teacher information

Measure	District	Peer Average	State Average
Attendance rate	94%	93%	95%
Graduation rate (2010)	84%	80%	78%
Poverty rate (2010)	33%	32%	22%
Students per teacher	16.7	15.1	18.1
Average teacher salary	\$41,745	\$40,287	\$45,637
Average years of experience	8.8	11.6	10.9
Percent of teachers in first 3 years	22%	19%	16%

### Proposition 301 pay, goals, and results

Average additional salary earned by teachers: \$5,042

Type of goal	Goal met?
Student achievement	■
Dropout/graduation rates	■
Student attendance	-
Parent/student satisfaction	-
Teacher attendance	-
Teacher professional development	▲
Teacher evaluations	-
Tutoring	-
Other	■

■ = yes, □ = no, ▲ = partially, and - = no goal set