

Scottsdale Unified School District

Maricopa County
Operational peer group: A
Legislative districts: 8, 11, 17

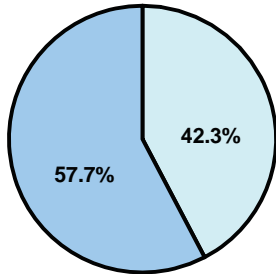
District size: Very Large
Students attending: 25,680
Number of schools: 32

OPERATIONAL EFFICIENCY

Average per-pupil spending

District
State

Classroom
\$4,773
\$4,497



Nonclassroom
\$3,496
\$3,411

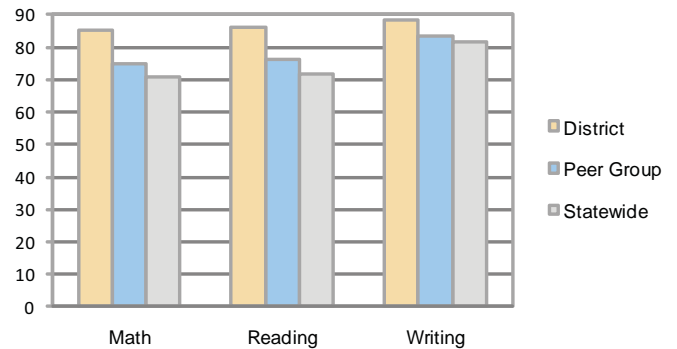
Total
\$8,269
\$7,908

5-year trend

Total spending per pupil increased by 31 percent. Spending in the classroom varied year to year and decreased significantly from 63.7 to 57.7 percent. Spending on plant operations, food service, and instruction support increased, while spending in other nonclassroom areas remained fairly stable.

STUDENT ACHIEVEMENT AND TEACHER INFORMATION

Percentage of students meeting state standards (AIMS)



Adequate Yearly Progress (AYP) toward federal goals

29 schools met all applicable AYP objectives for NCLB. 3 did not because they failed to meet one or more of the following objectives: academic progress (2); attendance rate (1); graduation rate (1).

Student and teacher information

Measure	District	Peer average	State average
Attendance rate	96%	96%	95%
Graduation rate (2008)	90%	86%	75%
Poverty rate	8%	14%	19%
Student/teacher ratio	17.0	17.5	17.1
Average teacher salary	\$51,128	\$50,748	\$45,209
Average years' experience	11.2	10.5	8.3
Percent of teachers in first 3 years	18%	20%	16%

District's cost measures relative to peer group

Operational Area	Measure	District	Peer Average	State Average
Administration	Cost per pupil	\$682	\$639	\$729
	Students per administrator	71	77	66
Plant Operations	Cost per square foot	\$5.75	\$6.38	\$6.40
	Square footage per student	163	138	144
Food Service	Cost per meal equivalent	\$2.45	\$2.49	\$2.53
Transportation	Cost per mile	\$3.39	\$4.22	\$3.36
	Miles per rider	390	298	271

Very Low Low Comparable High Very High

Per-pupil spending by function

	District		Peer	State	National
	2008	2009	2009	2009	2007
Total	\$8,188	\$8,269	\$7,781	\$7,908	\$9,683
Classroom dollars	\$4,949	\$4,773	\$4,577	\$4,497	\$5,903
Nonclassroom dollars:	\$3,239	\$3,496	\$3,204	\$3,411	\$3,780
Administration	706	682	639	729	1,050
Plant Operations	693	936	881	920	951
Food Service	357	369	322	382	369
Transportation	352	341	330	343	406
Student Support	601	651	616	594	512
Instruction Support	520	507	398	431	470
Other	10	10	18	12	22

Proposition 301

Teacher pay

On average, each teacher, librarian, speech pathologist, and counselor earned between \$6,084 and \$7,184 in additional salary, and each teacher on assignment earned \$2,318.

Performance pay plan goals and results

Type of goal	Goal met?
Student achievement	■
Dropout/ graduation rates	
Student attendance	
Parent/student satisfaction	■
Teacher attendance	
Teacher professional development	■
Teacher evaluations	
Tutoring	
Other	

■ = yes, □ = no, and ▮ = partially