

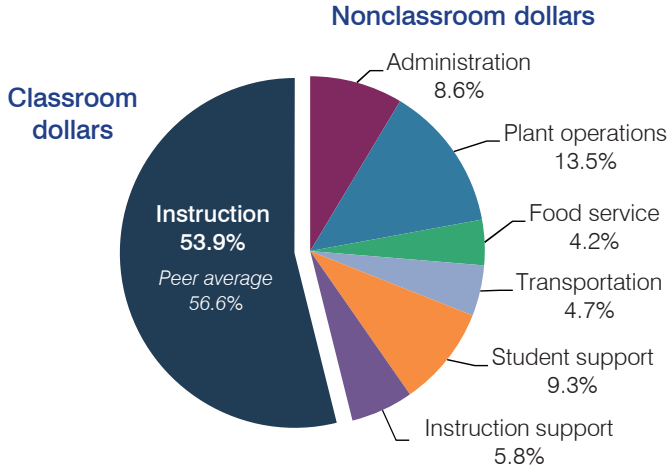
# Scottsdale Unified School District

Maricopa County  
 Efficiency peer groups 1 and T-5, Achievement peer group 2  
 Legislative district(s): 23, 24, 26, and 28

District size, location: Very large, City  
 Students attending: 23,274  
 Number of schools: 30

## OPERATIONAL EFFICIENCY

### Spending by operational area



### Efficiency measures relative to peer averages

Operational area	Measure	District	Peer average	State average
Administration	Cost per pupil	\$651	\$641	\$780
	Students per administrative position	77	81	67
Plant operations	Cost per square foot	\$5.66	\$5.93	\$6.09
	Square footage per student	182	144	153
Food service	Cost per meal equivalent	\$2.40	\$2.75	\$2.79
Transportation	Cost per mile	\$3.89	\$3.48	\$3.66
	Cost per rider	\$1,521	\$1,392	\$1,071

Very low   Low   Comparable   High   Very high

### Per pupil spending

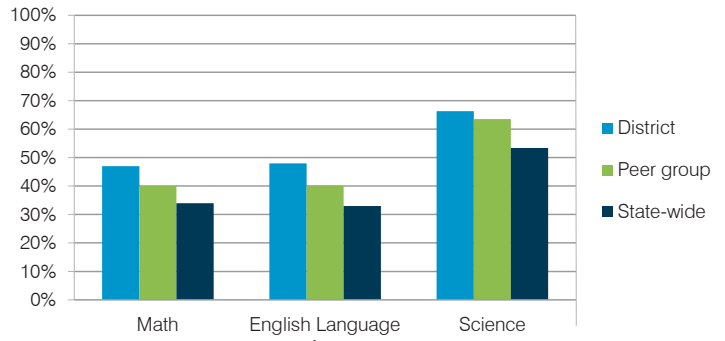
Spending by area	District		Peer average	State average
	2014	2015	2015	2015
Instruction	\$ 4,070	\$ 4,094	\$ 4,107	\$ 4,105
Administration	660	651	641	780
Plant operations	966	1,028	853	930
Food service	312	316	333	417
Transportation	347	356	343	371
Student support	690	704	618	613
Instruction support	417	442	367	442
<b>Total operational</b>	<b>\$ 7,462</b>	<b>\$ 7,591</b>	<b>\$ 7,262</b>	<b>\$ 7,658</b>
Land and buildings	\$ 259	\$ 187	\$ 551	\$ 641
Equipment	357	329	316	383
Interest	535	545	266	225
Other	224	217	184	150
<b>Total nonoperational</b>	<b>\$ 1,375</b>	<b>\$ 1,278</b>	<b>\$ 1,317</b>	<b>\$ 1,399</b>
<b>Total per pupil spending</b>	<b>\$ 8,837</b>	<b>\$ 8,869</b>	<b>\$ 8,579</b>	<b>\$ 9,057</b>

## STUDENT AND TEACHER MEASURES, FINANCIAL ASSESSMENT, AND REVENUE

### Student and teacher measures

Measure	District	Peer average	State average
Attendance rate	95%	95%	94%
Graduation rate (2014)	87%	88%	76%
Poverty rate (2014)	11%	14%	23%
Students per teacher	19.7	19.3	18.6
Average teacher salary	\$47,332	\$44,660	\$46,008
Average years of teacher experience	13.9	10.7	11.0
Percentage of teachers in first 3 years	11%	19%	20%

### Students who met state standards



### Financial stress assessment

Overall financial stress level: **Moderate**

Measure: 2013 through 2015	Assessment
Change in number of district students	Large decrease
Spending exceeded operating/capital budgets	No overspending
Spending increase election results	Voter-approved
Operating reserve percentage (max. 4%), trend	1.9%, Decreasing
Years of capital reserve held	More than 3 years
Current financial and internal control status	Compliant

Low   Moderate   High

### Per pupil revenues

Revenues by source	District		Peer average	State average
	2014	2015	2015	2015
Federal	\$ 602	\$ 727	\$ 839	\$ 1,299
State	1,423	1,510	3,183	3,517
Local	7,818	7,610	4,941	4,248
<b>Total revenues per pupil</b>	<b>\$ 9,843</b>	<b>\$ 9,847</b>	<b>\$ 8,963</b>	<b>\$ 9,064</b>
<b>Select revenues from common sources</b>				
Equalization formula funding	\$ 5,528	\$ 5,388	\$ 5,221	\$ 5,303
Grants	560	718	854	1,167
Donations and tax credits	189	178	83	78
<b>Select revenues from less common sources</b>				
Desegregation	\$ 305	\$ 317	4 of 10	
Small school adjustment	0	0	0 of 10	
Federal impact aid	0	0	2 of 10	
Voter-approved levy increases	2,126	1,954	10 of 10	

# Scottsdale USD—page 2

## Classroom dollar percentage

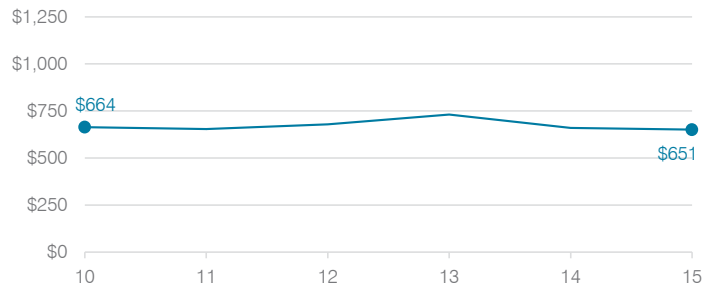
Year:	2001	2002	2003	2004	2005	2006	2007	2008	2009	2010	2011	2012	2013	2014	2015
Percentage:	58.6	59.0	61.5	63.7	62.3	60.5	61.3	60.4	57.7	59.5	57.7	58.7	57.9	54.5	53.9

### OPERATIONAL TRENDS Fiscal years as indicated

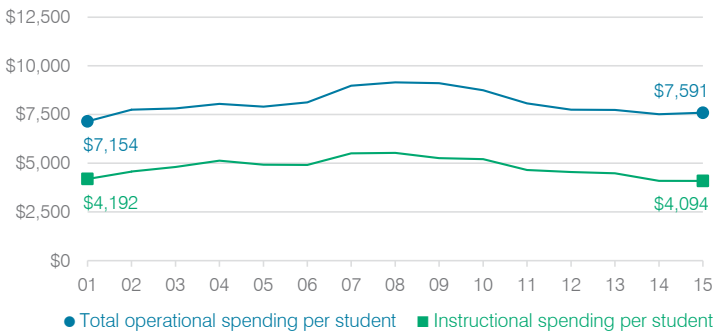
#### 5-year spending trend (2010 through 2015)

Total operational spending per pupil, adjusted for inflation, decreased by 13 percent. The percentage of dollars spent in the classroom varied year to year, decreasing overall from 59.5 to 53.9 percent. As a percentage of total operational spending, student support increased substantially and plant operations and instruction support increased. Most other nonclassroom areas remained fairly stable.

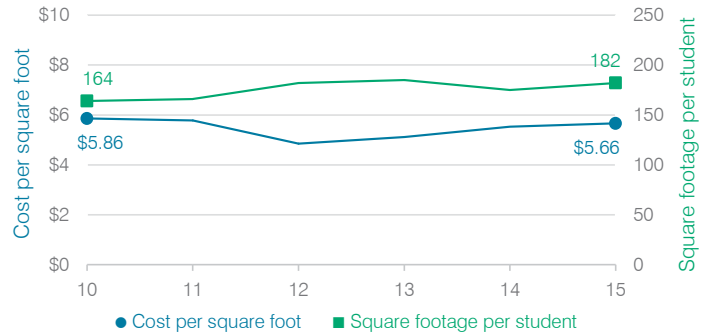
#### Administrative cost per student



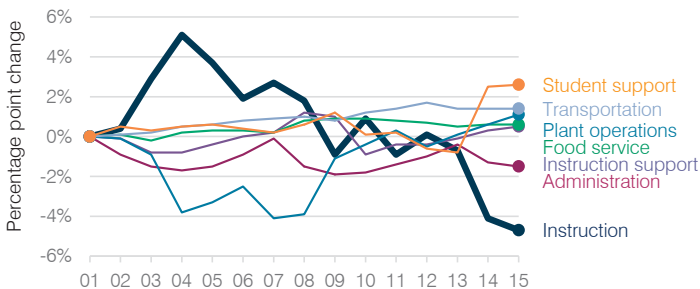
#### Total operational and instructional spending per student (inflation adjusted to 2015 dollars)



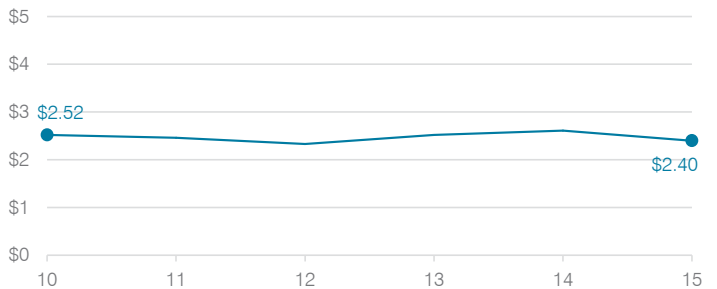
#### Plant cost per square foot and square footage per student



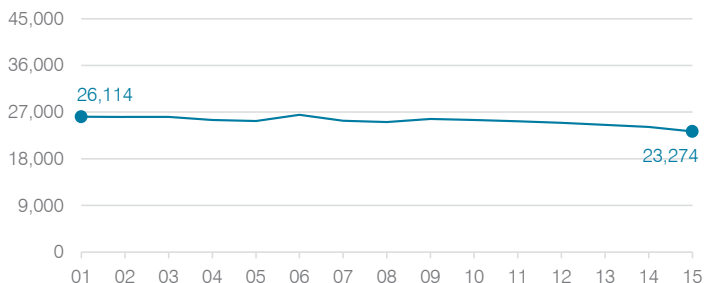
#### Changes in operational spending percentages



#### Food service cost per meal



#### Students attending



#### Transportation costs per mile and per rider

