

Sedona-Oak Creek Joint Unified School District

Yavapai County

Efficiency peer groups 5 and T-7, Achievement peer group 4¹

Legislative district(s): 6

District size, location:

Medium, Town

Students attending:

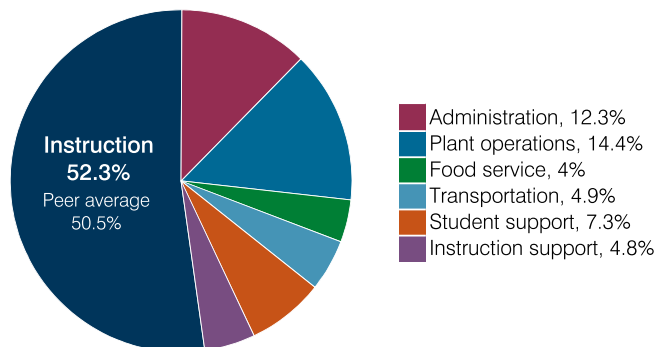
927

Number of schools:

3

OPERATIONAL EFFICIENCY

Spending by operational area



Efficiency measures relative to peer averages

Operational area	Measure	District	Peer average	State average
Administration	Cost per pupil	\$1,283	\$1,221	\$860
	Students per administrative position	52	54	66
Plant operations	Cost per square foot	\$3.99	\$5.43	\$6.34
	Square footage per student	378	257	156
Food service	Cost per meal	\$4.70	\$3.66	\$3.02
Transportation	Cost per mile	\$4.67	\$3.35	\$4.05
	Cost per rider	\$1,689	\$1,057	\$1,301

Very low
Low
Comparable
High
Very high

Per pupil spending

Spending by area	District		Peer average 2018	State average 2018
	2017	2018		
Instruction	\$ 4,663	\$ 5,477	\$ 4,824	\$ 4,480
Administration	1,047	1,283	1,221	860
Plant operations	1,439	1,510	1,365	988
Food service	400	416	437	425
Transportation	433	508	532	388
Student support	713	761	623	693
Instruction support	445	508	359	462
Total operational	9,140	10,463	9,361	8,296
Land and buildings	117	81	799	827
Equipment	300	449	433	409
Interest	2,169	2,658	248	228
Other	119	187	71	169
Total nonoperational	2,705	3,375	1,551	1,633
Total per pupil spending	\$ 11,845	\$ 13,838	\$ 10,912	\$ 9,929

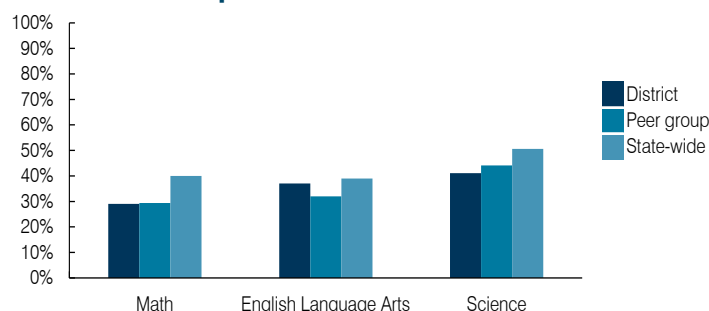
¹ See Appendix A for information such as districts included in each peer group and Appendix B for sources and methodology.

STUDENT ACHIEVEMENT, STUDENT AND TEACHER MEASURES, AND REVENUES

ADE-assigned school letter grades

Grade	Number of schools	Percentage of schools
A	1	33%
B	0	0%
C	2	67%
D	0	0%
F	0	0%

Students who passed State assessments



Student and teacher measures

Measure	District	Peer average	State average
Attendance rate	94%	94%	94%
Graduation rate (2017)	80%	85%	78%
Poverty rate (2017)	15%	13%	19%
Special education population	10%	13%	12%
Students per teacher	14.5	16.6	18.4
Average teacher salary	\$42,942	\$47,740	\$48,951
Amount from Prop 301	\$6,961	\$6,338	\$6,411
Average years of teacher experience	14.8	11.9	11.4
Percentage of teachers in first 3 years	6%	17%	19%

Per pupil revenues

Revenues by source	District		Peer average 2018	State average 2018
	2017	2018		
Federal	\$ 820	\$ 891	\$ 3,917	\$ 1,317
State	1,909	2,204	4,283	4,011
Local	13,681	14,205	4,207	4,592
Total per pupil revenues	\$ 16,410	\$ 17,300	\$ 12,407	\$ 9,920

Select revenues from common sources

Source	District	Peer average	State average
Equalization formula funding	\$ 5,943	\$ 6,257	\$ 5,992
Grants	845	931	1,703
Donations and tax credits	305	440	147

Select revenues from less common sources

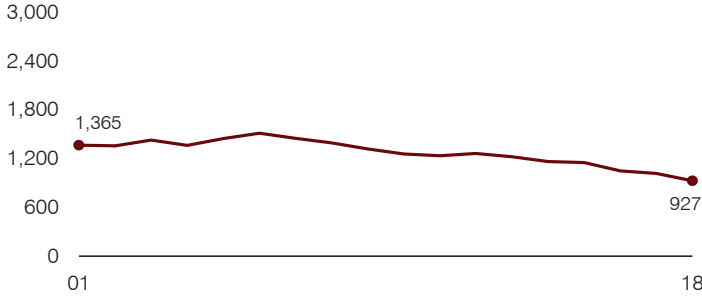
Source	District	Peer average	Number of peers receiving
Desegregation	\$ 0	\$ 0	0 of 31
Small school adjustment	0	0	0 of 31
Federal impact aid	0	0	16 of 31
Voter-approved levy increases	6,993	7,209	21 of 31

Instructional spending percentage

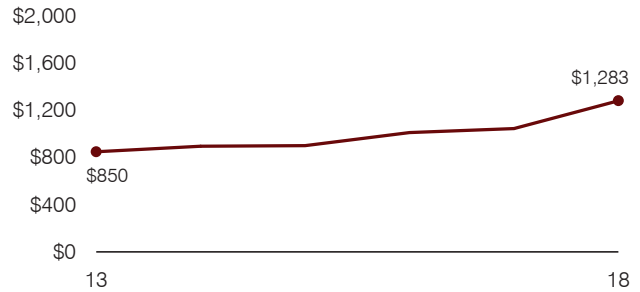
Year: 2001 2002 2003 2004 2005 2006 2007 2008 2009 2010 2011 2012 2013 2014 2015 2016 2017 2018
 Percentage: 49.0 50.5 53.4 52.3 52.7 54.6 54.9 55.1 54.4 53.2 54.4 53.4 54.4 52.8 52.6 51.7 51.0 52.3

TRENDS AND FINANCIAL STRESS ASSESSMENT
 Fiscal years as indicated

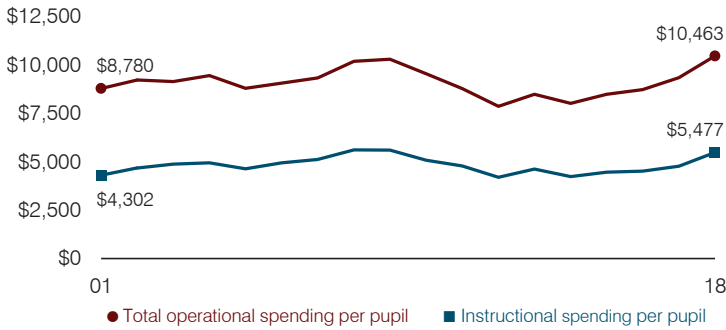
Students attending



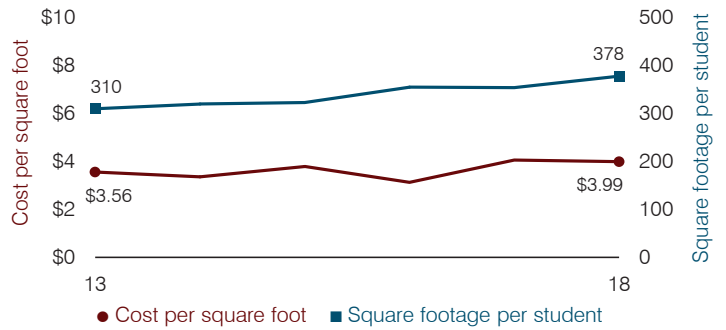
Administrative cost per pupil



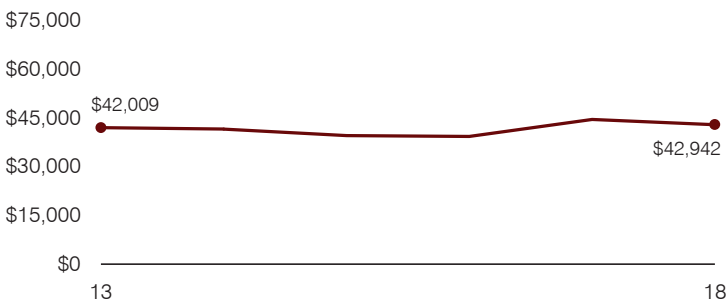
Total operational and instructional spending per pupil (inflation adjusted to 2018 dollars)



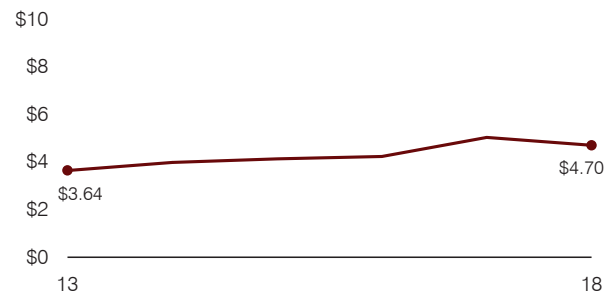
Plant cost per square foot and square footage per student



Average teacher salary



Food service cost per meal



Financial stress assessment

Overall financial stress level: **Low**

Measure: 2016 through 2018	Assessment
Change in number of district students	Large decrease
Spending exceeded operating/capital budgets	No overspending
Spending increase election results	Voter-approved
Operating reserve percentage, Trend	6.4%, Decreasing
Years of capital reserve held	More than 3 years
Current financial and internal control status	Compliant

Low Moderate High

Transportation costs per mile and per rider

