

Seligman Unified School District

Yavapai County
Operational peer group: G
Legislative districts: 1, 4

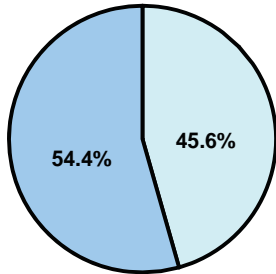
District size: Very Small
Students attending: 178
Number of schools: 2

OPERATIONAL EFFICIENCY

Average per-pupil spending

District
State

Classroom
\$8,477
\$4,497



Nonclassroom
\$7,104
\$3,411

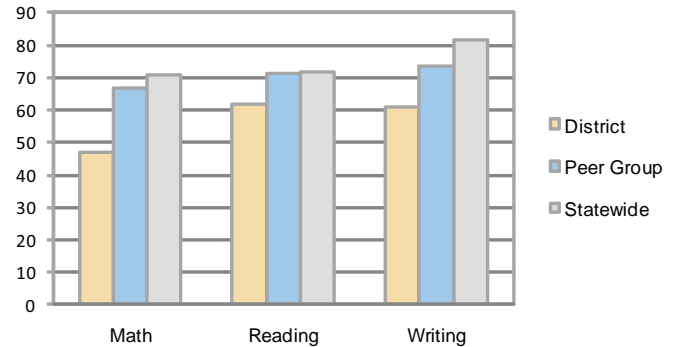
Total
\$15,581
\$7,908

5-year trend

Total spending per pupil increased by 29 percent. Spending in the classroom remained fairly stable and increased overall from 53.6 to 54.4 percent. Spending on plant operations and food service decreased, while spending in other nonclassroom areas varied year to year.

STUDENT ACHIEVEMENT AND TEACHER INFORMATION

Percentage of students meeting state standards (AIMS)



Adequate Yearly Progress (AYP) toward federal goals

2 schools did not meet applicable AYP objectives for NCLB because they failed to meet the percentage of students tested objective. 1 school also did not have a sufficient graduation rate.

Student and teacher information

Measure	District	Peer average	State average
Attendance rate	93%	94%	95%
Graduation rate (2008)	54%	54%	75%
Poverty rate	21%	31%	19%
Student/teacher ratio	9.9	10.8	17.1
Average teacher salary	\$46,430	\$45,165	\$45,209
Average years' experience	10.0	12.7	8.3
Percent of teachers in first 3 years	25%	15%	16%

District's cost measures relative to peer group

Operational Area	Measure	District	Peer Average	State Average
Administration	Cost per pupil	\$1,575	\$2,646	\$729
	Students per administrator	NR	26	66
Plant Operations	Cost per square foot	\$4.82	\$4.99	\$6.40
	Square footage per student	508	535	144
Food Service	Cost per meal equivalent	\$2.60	\$4.15	\$2.53
Transportation	Cost per mile	\$1.30	\$1.93	\$3.36
	Miles per rider	924	772	271

Very Low Low Comparable High Very High

Per-pupil spending by function

	District		Peer 2009	State 2009	National 2007
	2008	2009			
Total	\$16,424	\$15,581	\$15,223	\$7,908	\$9,683
Classroom dollars	\$8,899	\$8,477	\$7,195	\$4,497	\$5,903
Nonclassroom dollars:	\$7,525	\$7,104	\$8,028	\$3,411	\$3,780
Administration	1,541	1,575	2,646	729	1,050
Plant Operations	2,795	2,451	2,496	920	951
Food Service	454	384	800	382	369
Transportation	1,577	1,288	1,036	343	406
Student Support	663	884	529	594	512
Instruction Support	489	522	520	431	470
Other	6	0	1	12	22

Proposition 301

Teacher pay

On average, each teacher earned \$3,382 in additional salary.

Performance pay plan goals and results

Type of goal	Goal met?
Student achievement	■
Dropout/ graduation rates	
Student attendance	
Parent/student satisfaction	■
Teacher attendance	
Teacher professional development	
Teacher evaluations	■
Tutoring	
Other	

■ = yes, □ = no, and ▮ = partially