

Show Low Unified School District

Navajo County

Efficiency peer groups 4 and T-8, Achievement peer group 6¹

Legislative district(s): 6 and 7

District size, location:

Medium-large, Rural

Students attending:

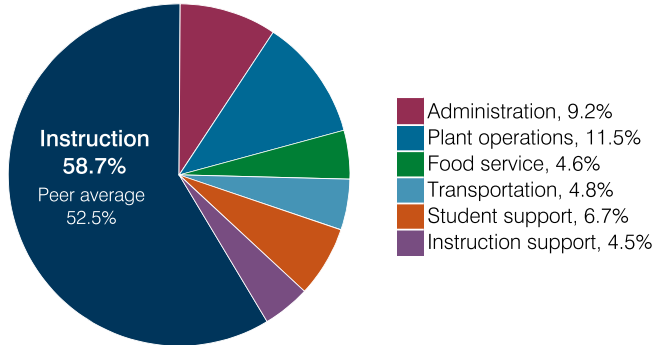
2,420

Number of schools:

5

OPERATIONAL EFFICIENCY

Spending by operational area



Efficiency measures relative to peer averages

Operational area	Measure	District	Peer average	State average
Administration	Cost per pupil	\$691	\$837	\$860
	Students per administrative position	67	69	66
Plant operations	Cost per square foot	\$4.71	\$5.61	\$6.34
	Square footage per student	184	184	156
Food service	Cost per meal	\$3.74	\$3.16	\$3.02
Transportation	Cost per mile	\$2.68	\$3.03	\$4.05
	Cost per rider	\$1,142	\$1,225	\$1,301

Legend: Very low (green), Low (blue), Comparable (yellow), High (orange), Very high (red)

Per pupil spending

Spending by area	District		Peer average 2018	State average 2018
	2017	2018		
Instruction	\$ 4,310	\$ 4,421	\$ 4,194	\$ 4,480
Administration	653	691	837	860
Plant operations	841	867	1,004	988
Food service	343	345	421	425
Transportation	374	361	418	388
Student support	460	507	643	693
Instruction support	385	334	480	462
Total operational	7,366	7,526	7,997	8,296
Land and buildings	111	133	570	827
Equipment	393	764	389	409
Interest	58	151	200	228
Other	54	51	69	169
Total nonoperational	616	1,099	1,228	1,633
Total per pupil spending	\$ 7,982	\$ 8,625	\$ 9,225	\$ 9,929

¹ See Appendix A for information such as districts included in each peer group and Appendix B for sources and methodology.

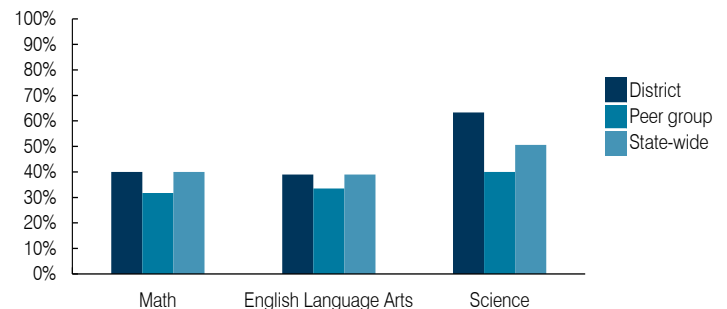
STUDENT ACHIEVEMENT, STUDENT AND TEACHER MEASURES, AND REVENUES

ADE-assigned school letter grades

Grade	Number of schools ²	Percentage of schools
A	0	0%
B	3	75%
C	1	25%
D	0	0%
F	0	0%

² Excludes schools for which letter grades were not published by ADE. See Appendix B for more information.

Students who passed State assessments



Student and teacher measures

Measure	District	Peer average	State average
Attendance rate	94%	93%	94%
Graduation rate (2017)	79%	85%	78%
Poverty rate (2017)	26%	29%	19%
Special education population	14%	14%	12%
Students per teacher	19.3	16.2	18.4
Average teacher salary	\$45,290	\$46,264	\$48,951
Amount from Prop 301	\$9,299	\$6,122	\$6,411
Average years of teacher experience	10.8	12.2	11.4
Percentage of teachers in first 3 years	18%	20%	19%

Per pupil revenues

Revenues by source	District		Peer average 2018	State average 2018
	2017	2018		
Federal	\$ 1,032	\$ 1,124	\$ 2,385	\$ 1,317
State	3,284	3,274	4,222	4,011
Local	3,750	3,570	3,291	4,592
Total per pupil revenues	\$ 8,066	\$ 7,968	\$ 9,898	\$ 9,920

Select revenues from common sources

Equalization formula funding	\$ 5,265	\$ 5,407	\$ 5,443	\$ 5,585
Grants	1,174	1,160	1,552	1,241
Donations and tax credits	47	55	63	90

Select revenues from less common sources

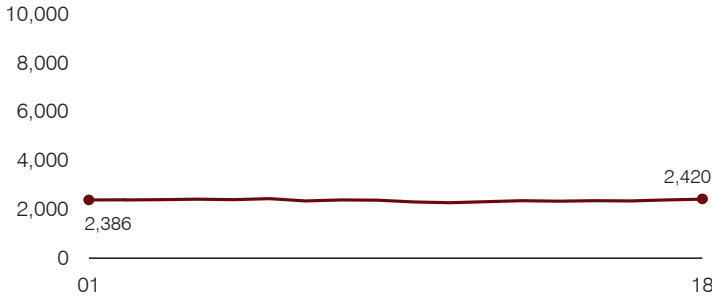
			Number of peers receiving
Desegregation	\$ 0	\$ 0	1 of 17
Small school adjustment	0	0	0 of 17
Federal impact aid	0	0	6 of 17
Voter-approved levy increases	13	2	13 of 17

Instructional spending percentage

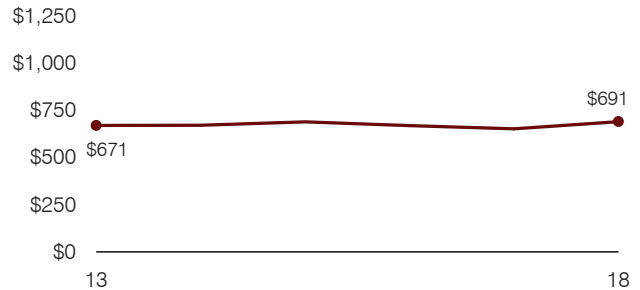
Year: 2001 2002 2003 2004 2005 2006 2007 2008 2009 2010 2011 2012 2013 2014 2015 2016 2017 2018
 Percentage: 57.9 61.4 59.4 60.3 59.1 56.7 55.0 56.5 54.9 55.6 54.3 52.8 55.4 57.0 56.2 56.9 58.5 58.7

TRENDS AND FINANCIAL STRESS ASSESSMENT
 Fiscal years as indicated

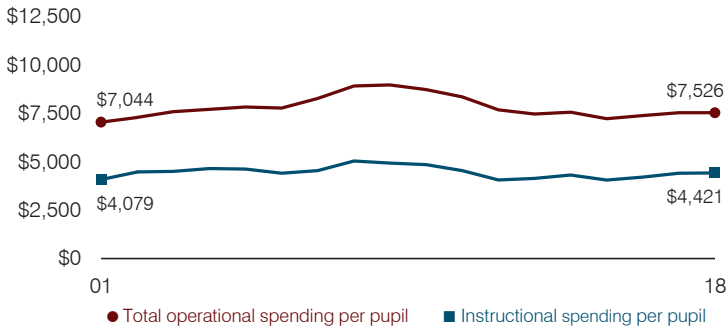
Students attending



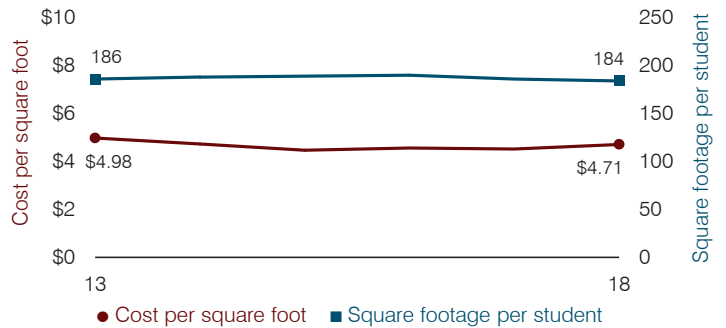
Administrative cost per pupil



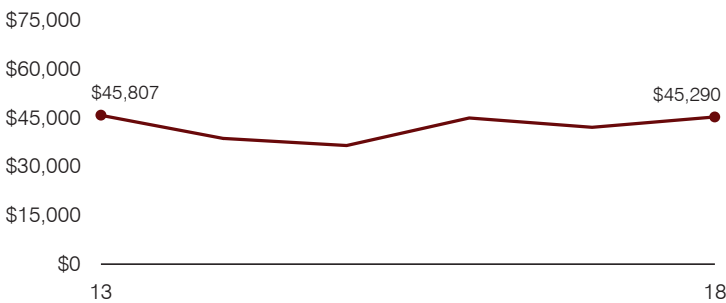
Total operational and instructional spending per pupil (inflation adjusted to 2018 dollars)



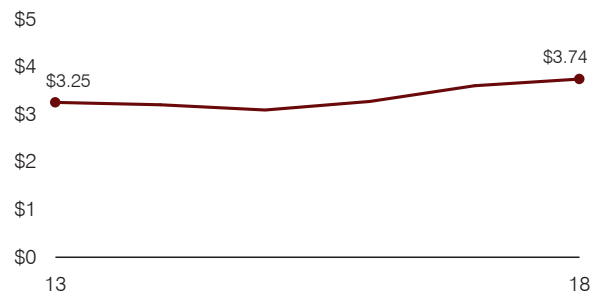
Plant cost per square foot and square footage per student



Average teacher salary



Food service cost per meal



Financial stress assessment

Overall financial stress level: **Moderate**

Measure: 2016 through 2018	Assessment
Change in number of district students	Increase
Spending exceeded operating/capital budgets	Operating and capital
Spending increase election results	Voter-approved
Operating reserve percentage, Trend	4.0%, Decreasing
Years of capital reserve held	1 to 3 years
Current financial and internal control status	Marginally compliant

Low
Moderate
High

Transportation costs per mile and per rider

