

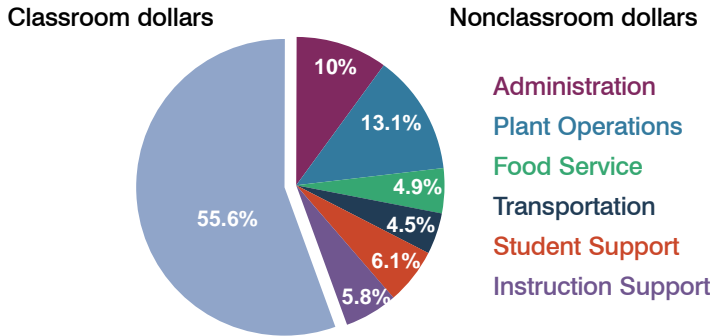
Show Low Unified School District

Navajo County
Peer groups: Efficiency 4, Achievement 20
Legislative district(s): 5

District size: Medium-Large
Students attending: 2,302
Number of schools: 6

OPERATIONAL EFFICIENCY

Spending by function

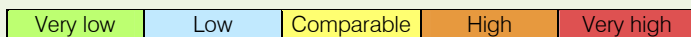


5-year trend

Total spending per pupil increased by 26 percent. Spending in the classroom varied year to year, decreasing significantly from 59.1 to 55.6 percent. Spending on plant operations and student support increased, while spending in other nonclassroom areas remained fairly stable.

District's cost measures relative to peer group

Operational Area	Measure	District	Peer Average	State Average
Administration	Cost per pupil	\$762	\$778	\$721
	Students per administrator	69	65	66
Plant Operations	Cost per square foot	\$5.01	\$5.81	\$6.25
	Square footage per student	199	171	146
Food Service	Cost per meal equivalent	\$2.55	\$2.53	\$2.41
Transportation	Cost per mile	\$2.69	\$2.94	\$3.35
	Miles per rider	300	297	282

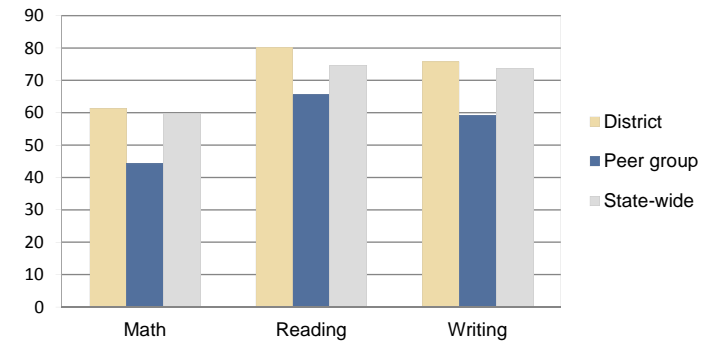


Per-pupil spending by function

	District		Peer 2010	State 2010	National 2008
	2009	2010			
Total	\$7,756	\$7,620	\$7,503	\$7,609	\$10,297
Classroom dollars	\$4,260	\$4,239	\$4,066	\$4,253	\$6,262
Nonclassroom dollars:	\$3,496	\$3,381	\$3,437	\$3,356	\$4,035
Administration	715	762	778	721	1,109
Plant Operations	977	995	973	914	1,003
Food Service	406	377	356	366	390
Transportation	375	345	356	342	438
Student Support	604	462	569	581	556
Instruction Support	419	440	405	432	539

STUDENT ACHIEVEMENT AND TEACHER INFORMATION

Percentage of students meeting state standards (AIMS)



Adequate Yearly Progress (AYP) toward federal goals

5 schools met all applicable AYP objectives for NCLB. 1 did not because its graduation rate was not sufficient.

Student and teacher information

Measure	District	Peer Average	State Average
Attendance rate	92%	93%	94%
Graduation rate (2009)	83%	80%	76%
Poverty rate (2009)	26%	26%	21%
Student/teacher ratio	20.2	15.4	17.9
Average teacher salary	\$51,647	\$41,299	\$47,077
Average years' experience	14.6	11.1	10.6
Percent of teachers in first 3 years	12%	20%	20%

Proposition 301

Teacher and other staff pay

On average, each teacher earned \$8,117 in additional pay, and each counselor earned \$6,987.

Performance pay plan goals and results

Type of goal	Goal met?
Student achievement	■
Dropout/graduation rates	-
Student attendance	-
Parent/student satisfaction	-
Teacher attendance	-
Teacher professional development	■
Teacher evaluations	-
Tutoring	-
Other	■

■ = yes, □ = no, ▴ = partially, and - = no goal set